



Bexar County 2016 Communicable Disease Report



Epidemiology Program

2509 Kennedy Circle, Bldg. 125

San Antonio, TX 78235

Phone: 210.207.8876 | Fax: 210.207.8807

Report Specific Information and Definitions

The data contained in this report were extracted from the National Electronic Disease Surveillance System (NEDSS Base System) and analyzed by the Epidemiology Program of the City of San Antonio Metropolitan Health District. Rates for diseases with case counts <20 are considered unstable and disease counts less than 5 (1-4) are suppressed to protect case confidentiality.

Information pertaining to causative agent, signs and symptoms, modes of transmission, incubation period and period of communicability was obtained from the Centers for Disease Control and Prevention (www.cdc.gov). Definitions are as follows:

- Causative Agent: bacteria, virus, parasite, fungus or prion which can cause disease state
- Signs/Symptoms: physical manifestations which may result from infection with a causative agent
- Mode(s) of Transmission: mechanisms by which the causative agent spreads among human populations
- Incubation Period: time interval from infection with a causative agent until the demonstration of signs or symptoms
- Period of Communicability: time period during which a causative agent may be transmitted directly or indirectly from a person to another person

Table 1. Selected Reported Notifiable Conditions, Bexar County, 2016

Condition	Case Count	Rate (cases/100,000 population)
Amebiasis	14	0.73
Campylobacteriosis	494	25.6
Carbapenem-resistant Enterobacteriaceae (CRE)	67	3.47
Chagas Disease	<5	-
Chikungunya virus disease	<5	-
Cryptosporidiosis	87	4.51
Cyclosporiasis	13	0.67
Cysticercosis	<5	-
Haemophilus Influenzae	18	0.93
Hepatitis A, acute	19	0.99
Hepatitis B, acute	5	0.26
Hepatitis C, acute	<5	-
Legionellosis	24	1.24
Listeriosis	<5	-
Lyme disease	5	0.26
Malaria	<5	-
Multidrug-resistant Acinetobacter (MDR-A)	72	3.73
Mumps	<5	-
Pertussis	54	2.8
Rickettsia, unspecified	<5	-
Salmonellosis	288	14.93
Shiga toxin-producing Escherichia coli (STEC)	54	2.8
Shigellosis	290	15.04
Spotted Fever Rickettsiosis	8	0.41
Streptococcus pneumoniae, invasive disease (IPD)	99	5.13
Streptococcus, invasive Group A	63	3.27
Streptococcus, invasive Group B	170	8.81
Typhoid fever (Salmonella typhi)	<5	-
Typhus fever-fleaborne, murine	66	3.42
Varicella (Chickenpox)	79	4.1
Vibrio parahaemolyticus	<5	-
Vibrio vulnificus infection	<5	-
Vibriosis, other or unspecified	<5	-
West Nile Fever	<5	-
Yersiniosis	<5	-
Zika Virus	31	1.61

Rates for diseases with case counts <20 are considered unstable
Less than five cases (1-4) are suppressed to protect confidentiality

1. Campylobacteriosis

Causative Agent: (bacterial) *Campylobacter* species

Signs/Symptoms: Diarrhea (usually bloody), abdominal pain, vomiting, nausea, malaise, and fever. Some people do not present with any symptoms.

Mode(s) of Transmission: Ingestion of food from infected animals (typically poultry) or food or water contaminated by feces of an infected animal. Contact with an infected animal (especially puppies and kittens).

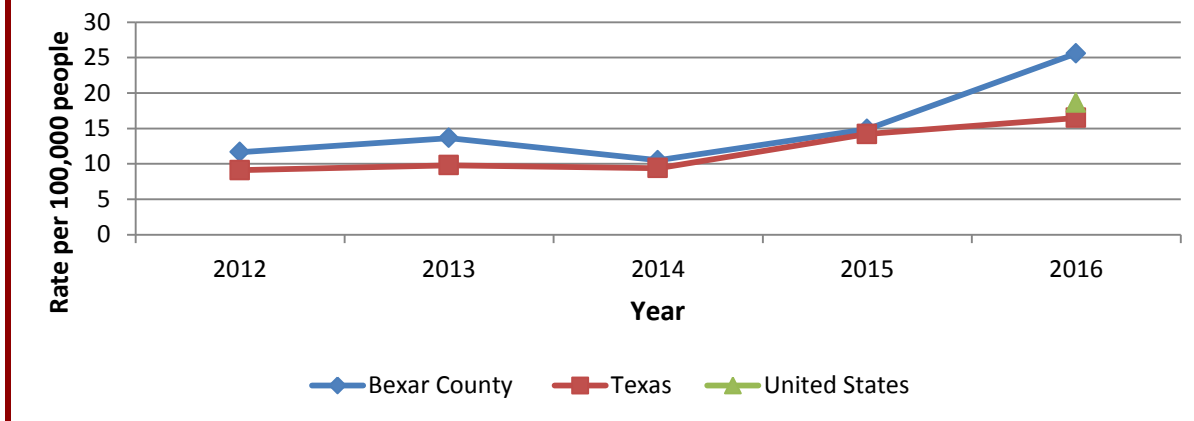
Incubation Period: Usually 1 to 10 days

Period of Communicability: Person-to-person transmission is uncommon.

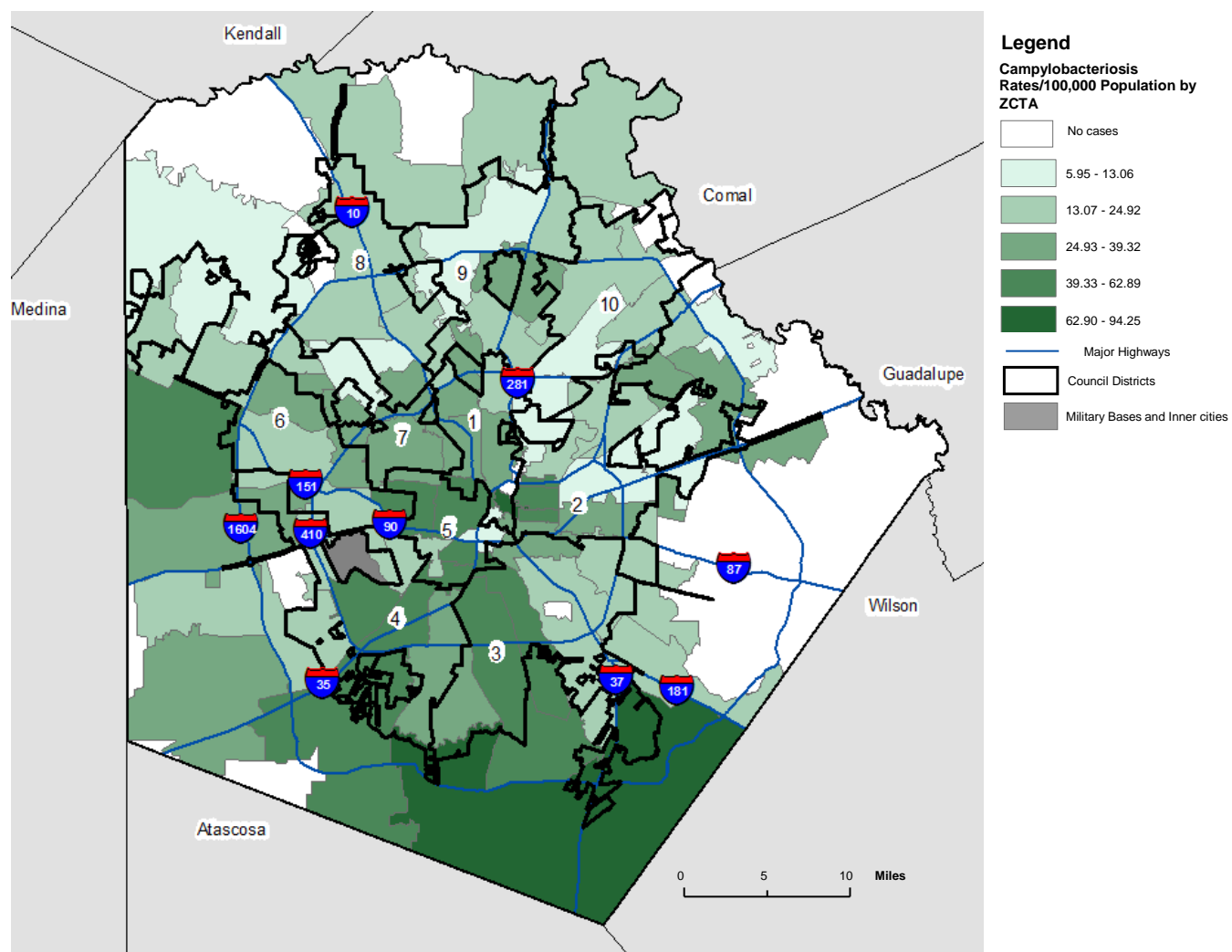
Table 2. Campylobacteriosis Disease Summary, Bexar County, 2016

Number of Cases	494	Incidence Rate	25.6
Gender	Number	Percent	Rate
Female	221	44.7	22.6
Male	273	55.3	28.7
Race/Ethnicity	Number	Percent	Rate
Hispanic	269	54.5	23.3
Black, NH	15	3.0	10.6
White, NH	109	22.1	20.0
Other	4	0.8	4.6
Age Group	Number	Percent	Rate
0-14	147	29.8	35.2
15-24	44	8.9	15.4
25-44	103	20.9	18.4
45-64	114	23.0	26.0
65+	86	17.4	37.9

Figure 1. Campylobacteriosis Incidence Rate by Year



Campylobacteriosis Rates, Bexar County, 2016



2. Shigellosis

Causative Agent: (bacterial) *Shigella* species

Signs/Symptoms: Diarrhea (typically bloody), fever, abdominal pain, and vomiting. Some people do not present with any symptoms.

Mode(s) of Transmission: Direct fecal-oral route or ingestion of food or water contaminated with feces of an infected person.

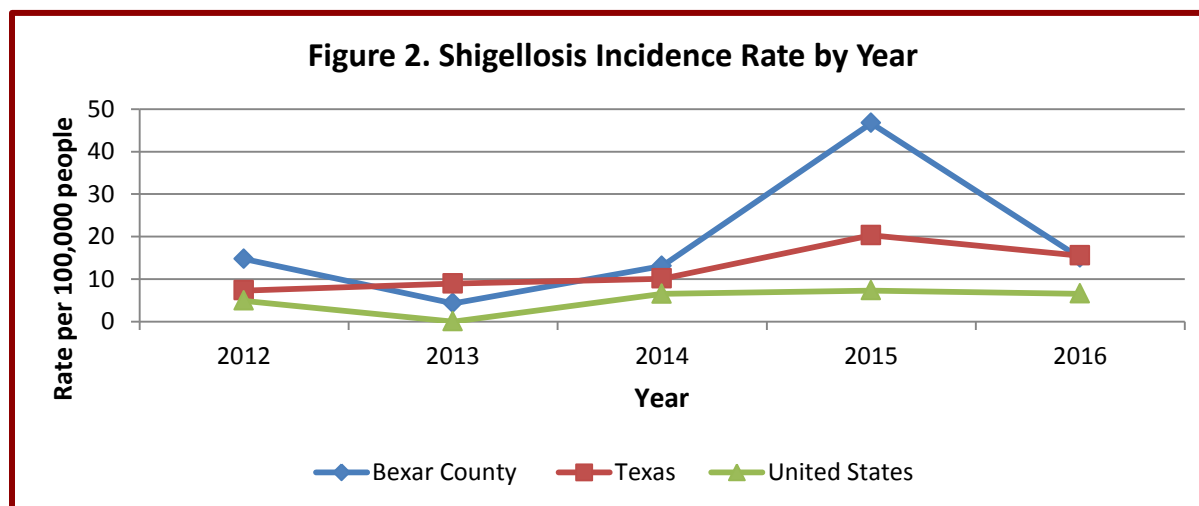
Incubation Period: Usually 1 – 3 days

Period of Communicability: If signs/symptoms are present, infected persons may transmit the bacteria for up to four weeks after becoming infected.

Table 3. Shigellosis Disease Summary, Bexar County, 2016

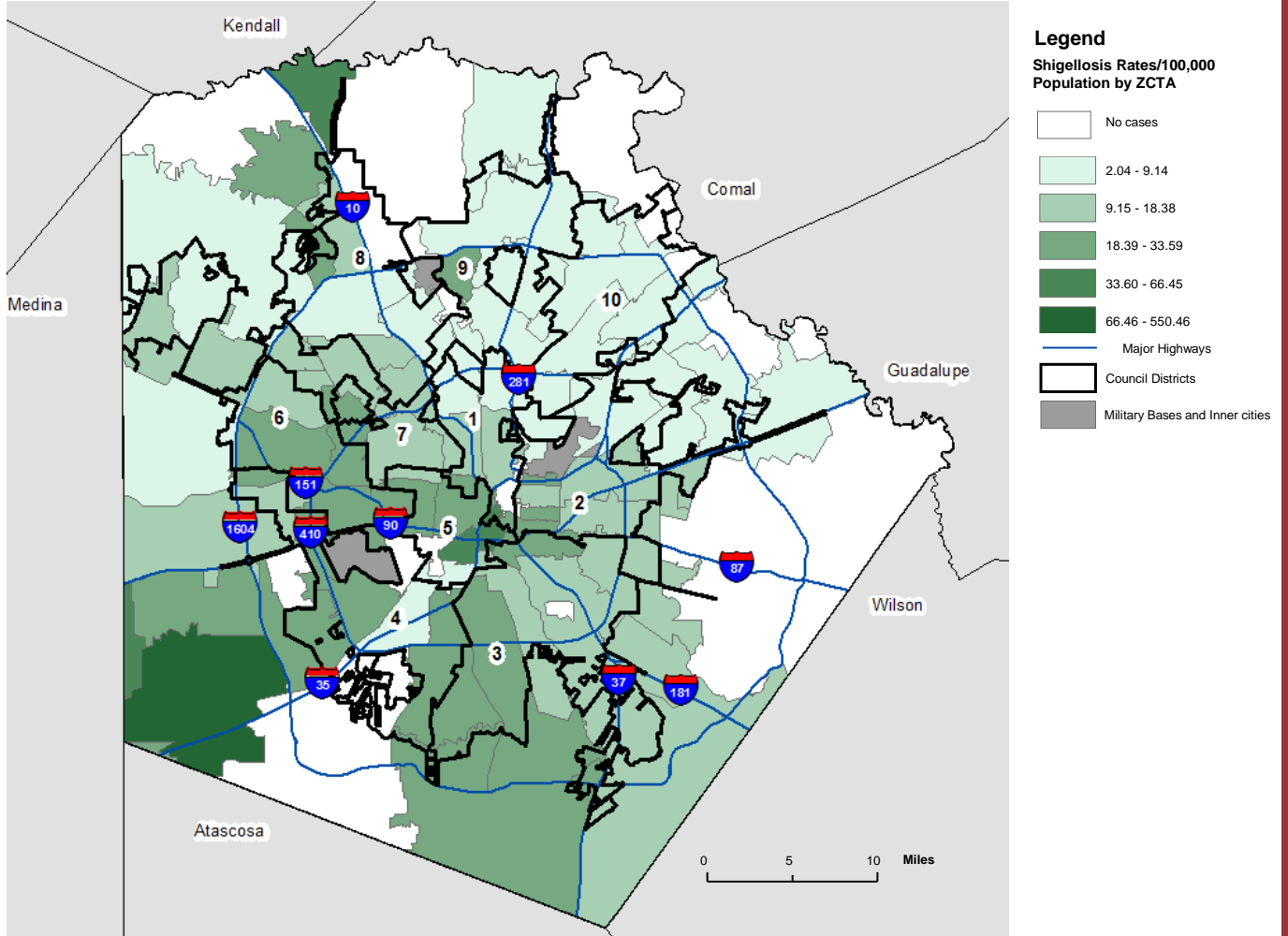
Number of Cases	290	Incidence Rate	15.04
Gender	Number	Percent	Rate
Female	156	53.8	16.0
Male	134	46.2	14.1
Race/Ethnicity	Number	Percent	Rate
Hispanic	191	65.9	16.5
Black, NH	6	2.1	4.3
White, NH	38	13.1	7.0
Other	52	17.9	6.0
Age Group	Number	Percent	Rate
0-14	231	79.7	55.3
15-24	10	3.4	3.5
25-44	39	13.4	7.0
45-64	4	1.4	0.9
65+	6	2.1	2.6

Figure 2. Shigellosis Incidence Rate by Year



Rates for Texas: Texas Department of State Health Services (DSHS) <http://www.dshs.texas.gov/IDCU/disease/shigellosis/Data/?terms=shigellosis%20rates>
 Rates for the United States: CDC Morbidity and Mortality Weekly (MMWR) 2012-2016 Summary of Notifiable

Shigellosis Rates, Bexar County, 2016



Rates for Texas: Texas Department of State Health Services (DSHS) <http://www.dshs.texas.gov/IDCU/disease/shigellosis/Data/?terms=shigellosis%20rates>
 Rates for the United States: CDC Morbidity and Mortality Weekly (MMWR) 2012-2016 Summary of Notifiable Diseases Population: U.S. Census Bureau, 2016
 American Community Survey 5-Year Estimates

3. Salmonellosis

Causative Agent: (bacterial) *Salmonella* species

Signs/Symptoms: Fever, headache, abdominal pain, diarrhea, and vomiting. Some people do not present with any symptoms.

Mode(s) of Transmission: Ingestion of food from infected animals or contaminated feces of an infected animal or person

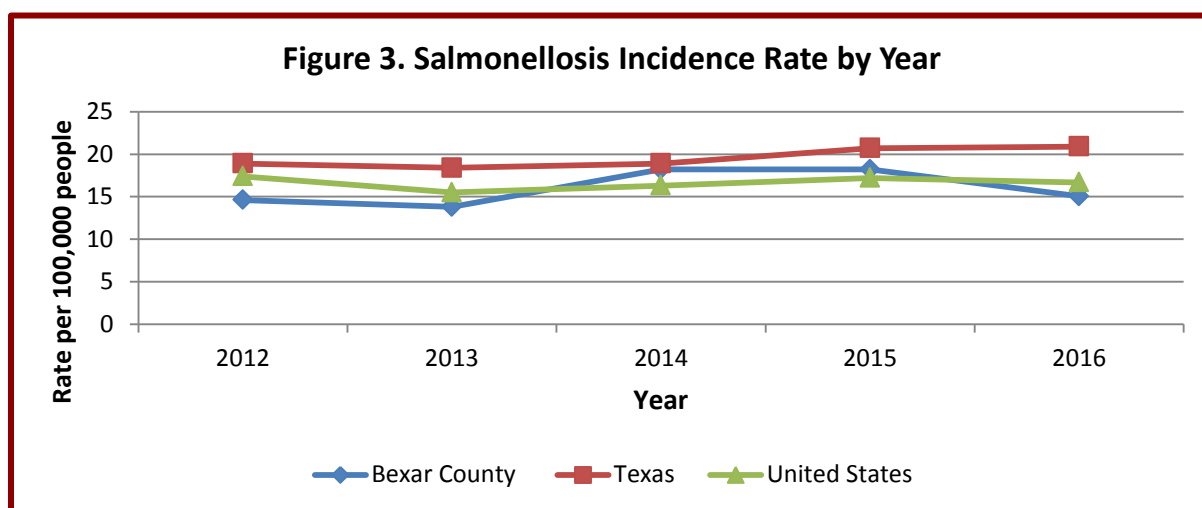
Incubation Period: Usually 1-2 days

Period of Communicability: If signs/symptoms are present, infected persons may transmit the bacteria for weeks up to a year after becoming infected.

Table 4. Salmonellosis Disease Summary, Bexar County, 2016

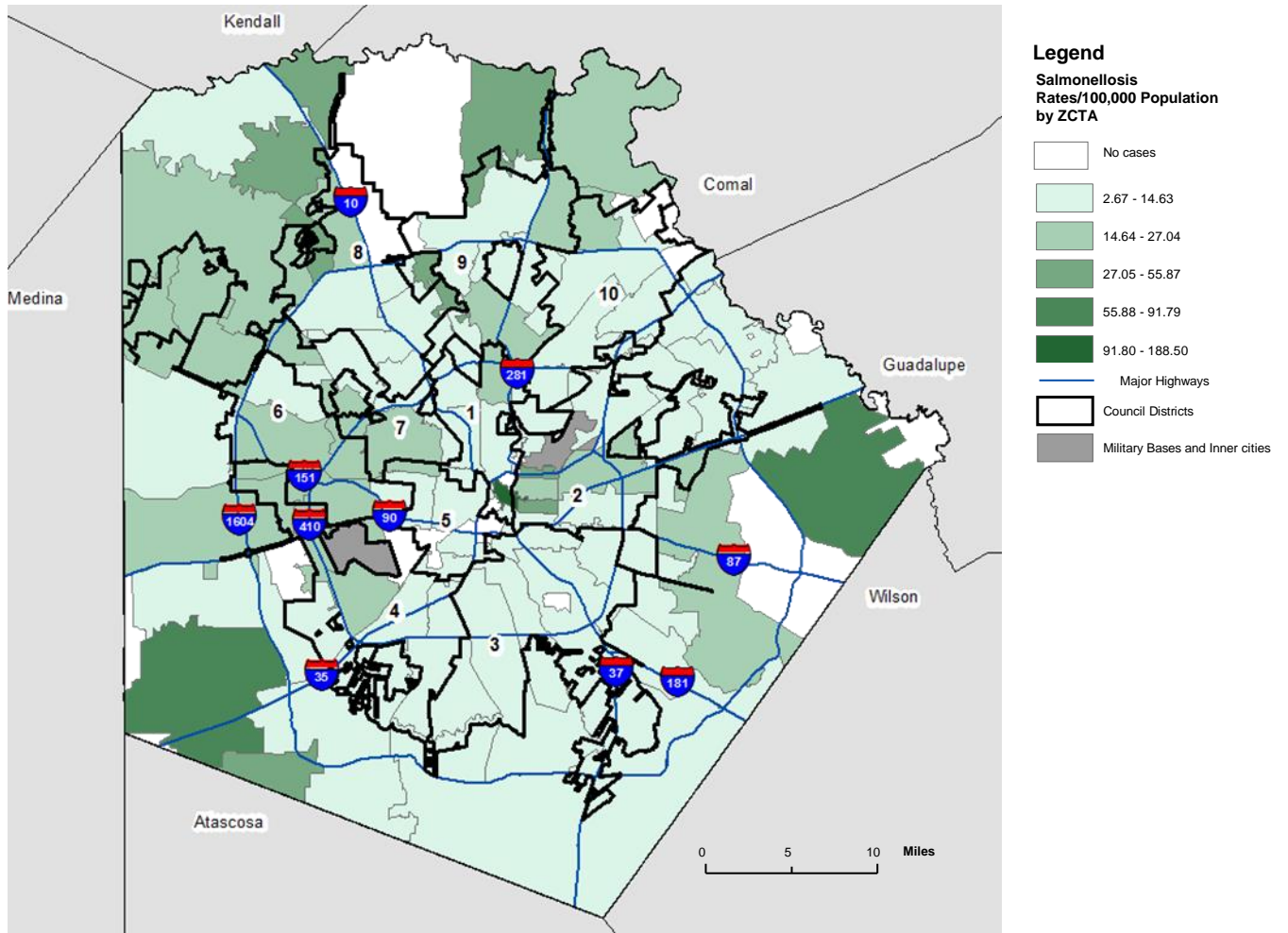
Number of Cases	288	Incidence Rate	14.98
Gender	Number	Percent	Rate
Female	155	53.8	15.9
Male	132	45.8	13.9
Race/Ethnicity	Number	Percent	Rate
Hispanic	104	36.1	9.0
Black, NH	6	2.1	4.3
White, NH	73	25.3	13.4
Other	1	34.7	1.1
Age Group	Number	Percent	Rate
0-14	126	44.0	30.4
15-24	18	6.3	6.3
25-44	46	16.0	8.2
45-64	53	18.4	12.1
65+	45	15.6	19.9

Figure 3. Salmonellosis Incidence Rate by Year



Rates for Texas: Texas Department of State Health Services (DSHS)
<http://www.dshs.texas.gov/IDCU/disease/salmonellosis/Data/?terms=salmonellosis%20incidence%20rate>
 Rates for the United States: CDC Morbidity and Mortality Weekly (MMWR) 2012-2016 Summary of Notifiable Diseases

Salmonellosis Rates, Bexar County, 2016



Rates for Texas: Texas Department of State Health Services (DSHS)

<http://www.dshs.texas.gov/IDCU/disease/salmonellosis/Data/?terms=salmonellosis%20incidence%20rate>

Rates for the United States: CDC Morbidity and Mortality Weekly (MMWR) 2012-2016 Summary of Notifiable Diseases Population: U.S. Census Bureau, 2016 American Community Survey 5-Year Estimates

4. Streptococcus, Invasive Group B (GBS)

Causative Agent: (bacterial) *Streptococcus agalactiae* or group B streptococcus

Signs/Symptoms: Amongst newborns symptoms include fever, difficulty breathing, irritability, lethargy, difficulty feeding, and bluish skin color. Symptoms may also include sepsis, pneumonia, and meningitis. Symptoms vary amongst adults depending on the part of the body infected.

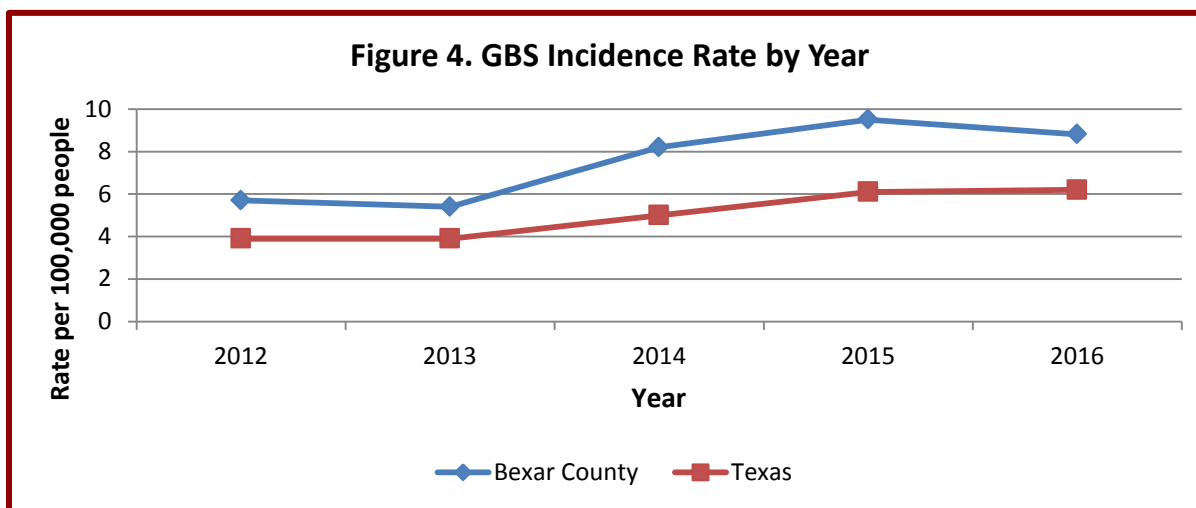
Modes(s) of Transmission: Pregnant women may pass along to babies during labor and birth. Mode of transmission amongst adults is unknown.

Incubation Period: Less than 7 days for babies less than seven days old, unknown for infants, children, and adults

Period of Communicability: Unknown

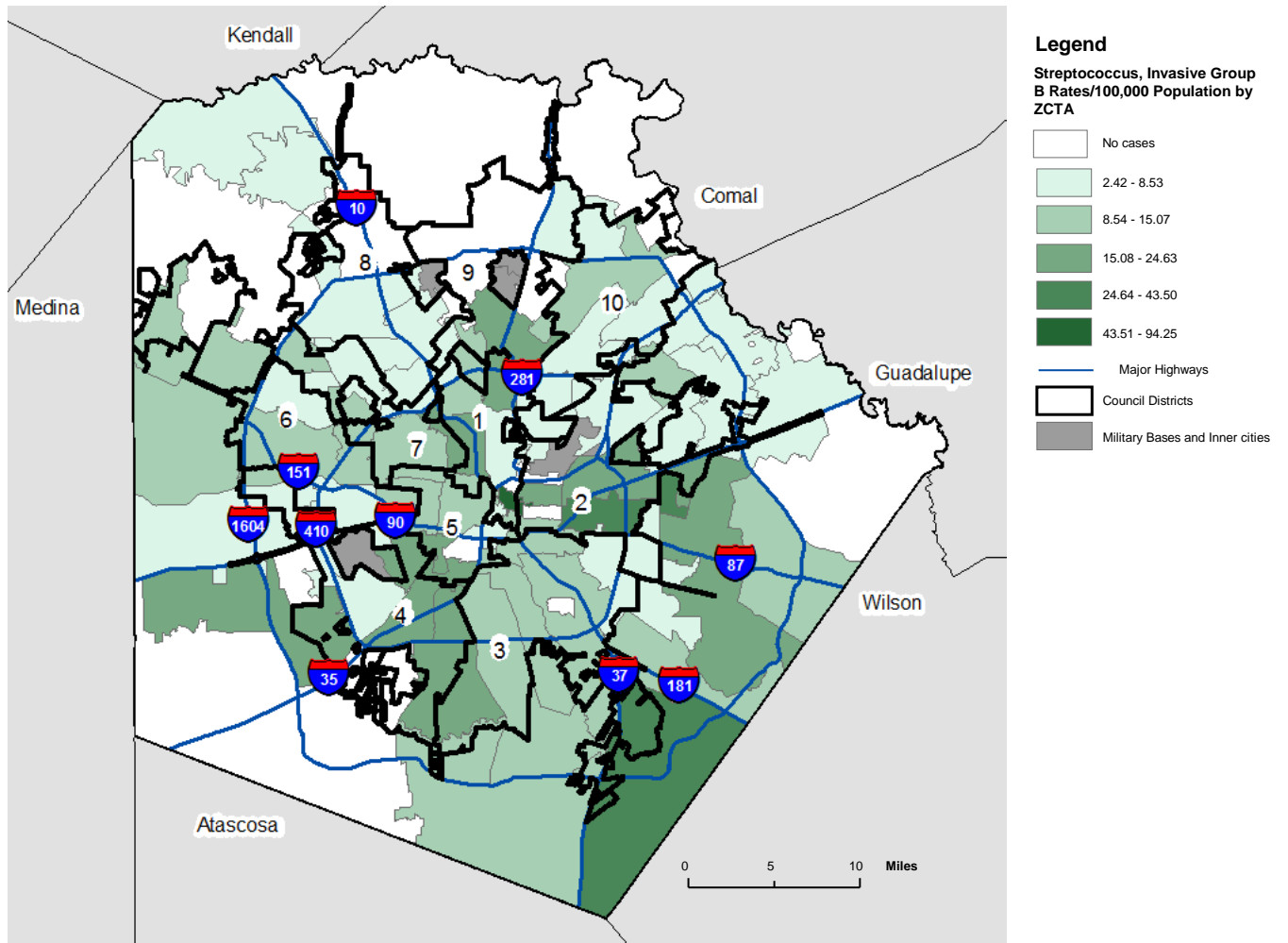
Table 5. Streptococcus, Invasive Group B Disease Summary, Bexar County, 2016

Number of Cases	170	Incidence Rate	8.81
Gender	Number	Percent	Rate
Female	71	41.8	7.3
Male	99	58.2	10.4
Race/Ethnicity	Number	Percent	Rate
Hispanic	85	50	7.4
Black, NH	12	7.1	8.5
White, NH	48	28.2	8.8
Other	0	0	-
Age Group	Number	Percent	Rate
0-14	29	17.0	6.9
15-24	3	1.8	1.1
25-44	35	20.6	6.2
45-64	61	35.9	13.9
65+	42	24.7	18.5



Rates for Texas: Texas Department of State Health Services (DSHS) <http://www.dshs.texas.gov/IDCU/disease/strep/Group-B-Streptococci-Data.doc?terms=gb%20incidence%20rate>
 National rates are not recorded as Group B Streptococcal Disease is not a nationally notifiable condition

Streptococcus, Invasive Group B Rates, Bexar County, 2016



Rates for Texas: Texas Department of State Health Services (DSHS) <http://www.dshs.texas.gov/IDCU/disease/strep/Group-B-Streptococci-Data.doc?terms=gbs%20incidence%20rate>

National rates are not recorded as Group B Streptococcal Disease is not a nationally notifiable condition Population: U.S. Census Bureau, 2016 American Community Survey 5-Year Estimates

5. Streptococcus Pneumoniae, Invasive (IPD)

Causative Agent: (bacterial) *Streptococcus pneumoniae*

Signs/Symptoms: Diarrhea (bloody and accompanied by nausea and vomiting), abdominal pain, malaise, and fever. Complications may include reactive arthritis, Guillain-Barre Syndrome, and irritable bowel syndrome.

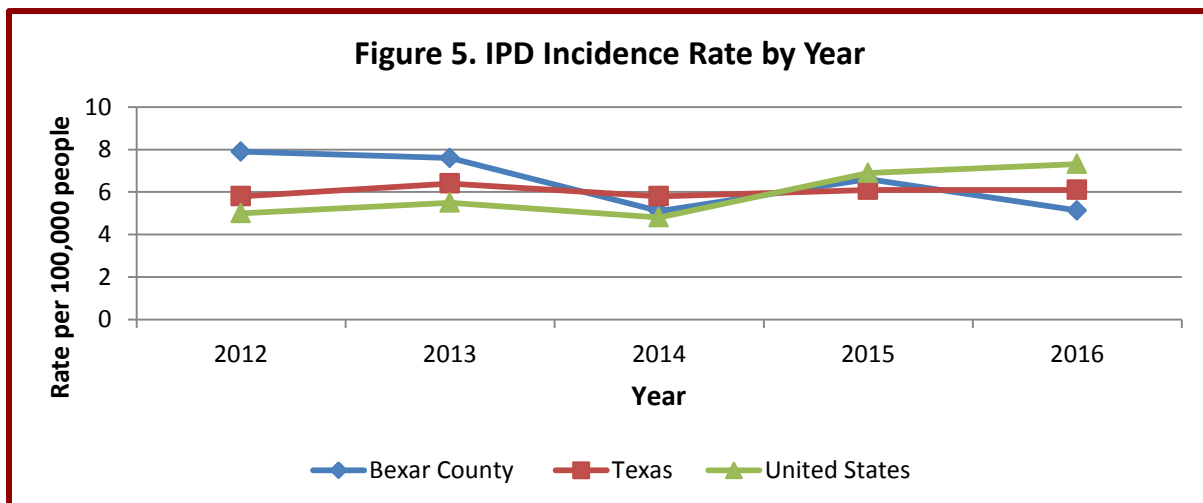
Mode(s) of Transmission: Contact with respiratory droplets of an infected person.

Incubation Period: Varies by type of infection and can be as short as 1 to 3 days

Period of Communicability: Unknown

Table 6. Streptococcus Pneumoniae, Invasive Disease Summary, Bexar County, 2016

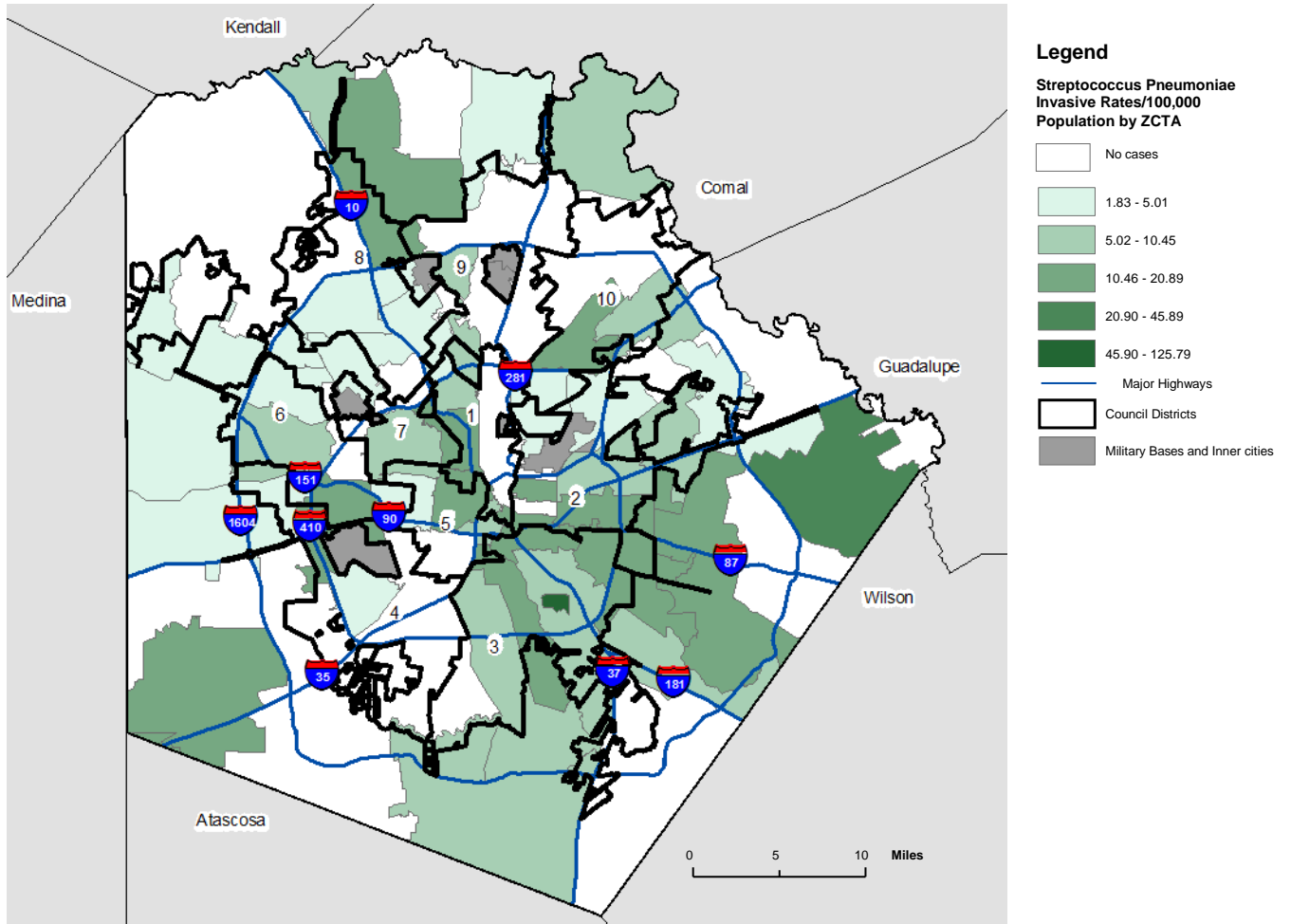
Number of Cases	99	Incidence Rate	5.13
Gender	Number	Percent	Rate
Female	42	42.4	4.3
Male	57	57.6	6.0
Race/Ethnicity	Number	Percent	Rate
Hispanic	41	41.4	3.5
Black, NH	12	12.1	8.5
White, NH	26	26.3	4.8
Other	1	1.0	1.1
Age Group	Number	Percent	Rate
0-14	10	10.1	2.4
15-24	2	2.0	0.7
25-44	13	13.1	2.3
45-64	49	49.5	11.2
65+	25	25.3	11.0



Rates for Texas: Texas Department of State Health Services (DSHS) <http://www.dshs.texas.gov/IDCU/disease/strep/Streptococcus-pneumoniae-Data.doc?terms=Streptococcus%20Pneumoniae%20rate>

Rates for the United States: CDC Morbidity and Mortality Weekly (MMWR) 2012-2016 Summary of Notifiable Diseases

Streptococcus Pneumoniae, Invasive Rates, Bexar County, 2016



Rates for Texas: Texas Department of State Health Services (DSHS) <http://www.dshs.texas.gov/IDCU/disease/strep/Streptococcus-pneumoniae-Data.doc?terms=Streptococcus%20Pneumoniae%20rate>

Rates for the United States: CDC Morbidity and Mortality Weekly (MMWR) 2012-2016 Summary of Notifiable Diseases Population: U.S. Census Bureau, 2016 American Community Survey 5-Year Estimates