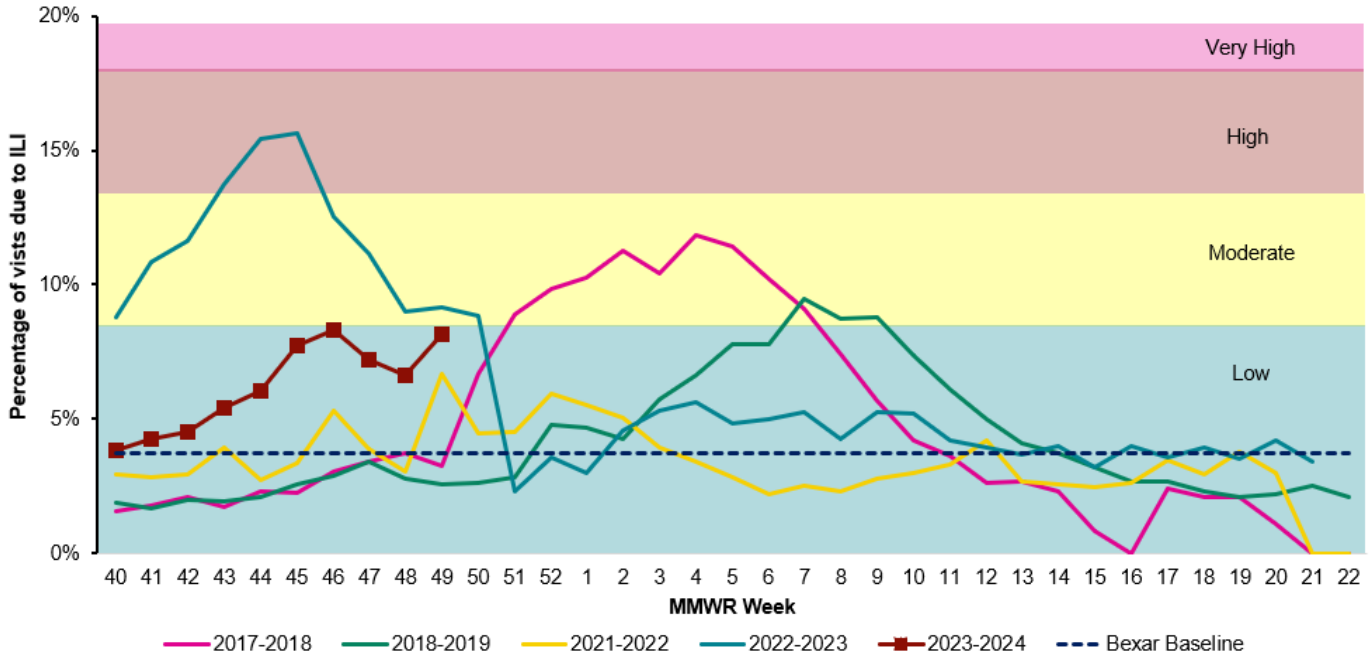




## U.S. Outpatient Influenza-like Illness Surveillance Network (ILINet)

Information on patient visits to health care providers for influenza-like illness (ILI) is collected throughout Bexar County. Health care providers voluntarily report this information to ILINet.

**Figure 1: Percentage of Visits Due to ILI Reported by Bexar County ILINet Participants 2017-2024 Seasons**



**Note:** Due to COVID-19 pandemic the 2019-2020 and 2020-2021 seasons were excluded from calculating the intensity thresholds.

The line graph in Figure 1 shows the percentage of visits due to ILI reported by Bexar County ILINet participants. Data from four previous influenza seasons from 2017-2023, and the current 2023-2024 influenza season are shown.

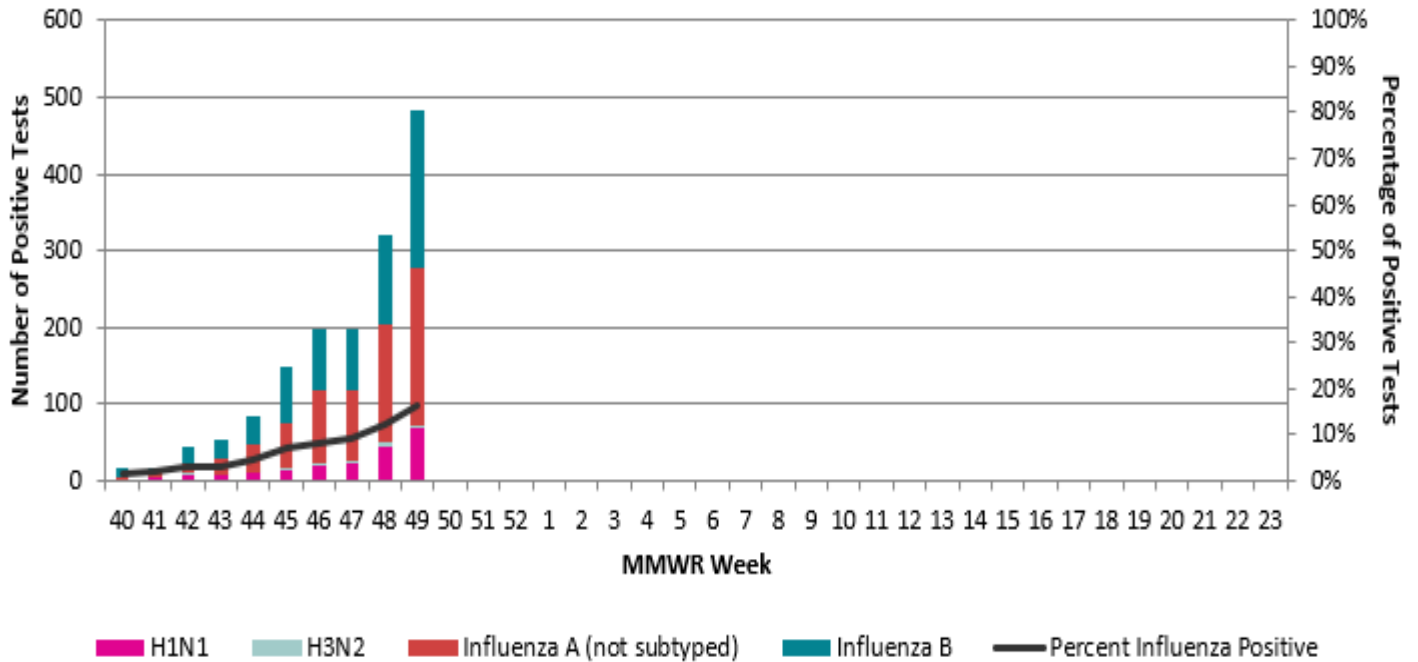
For 2023-2024 influenza season, the ILI percentage for Week 49 is 8.1%, which is higher than the Bexar County baseline of 3.7%. The activity level is considered low.







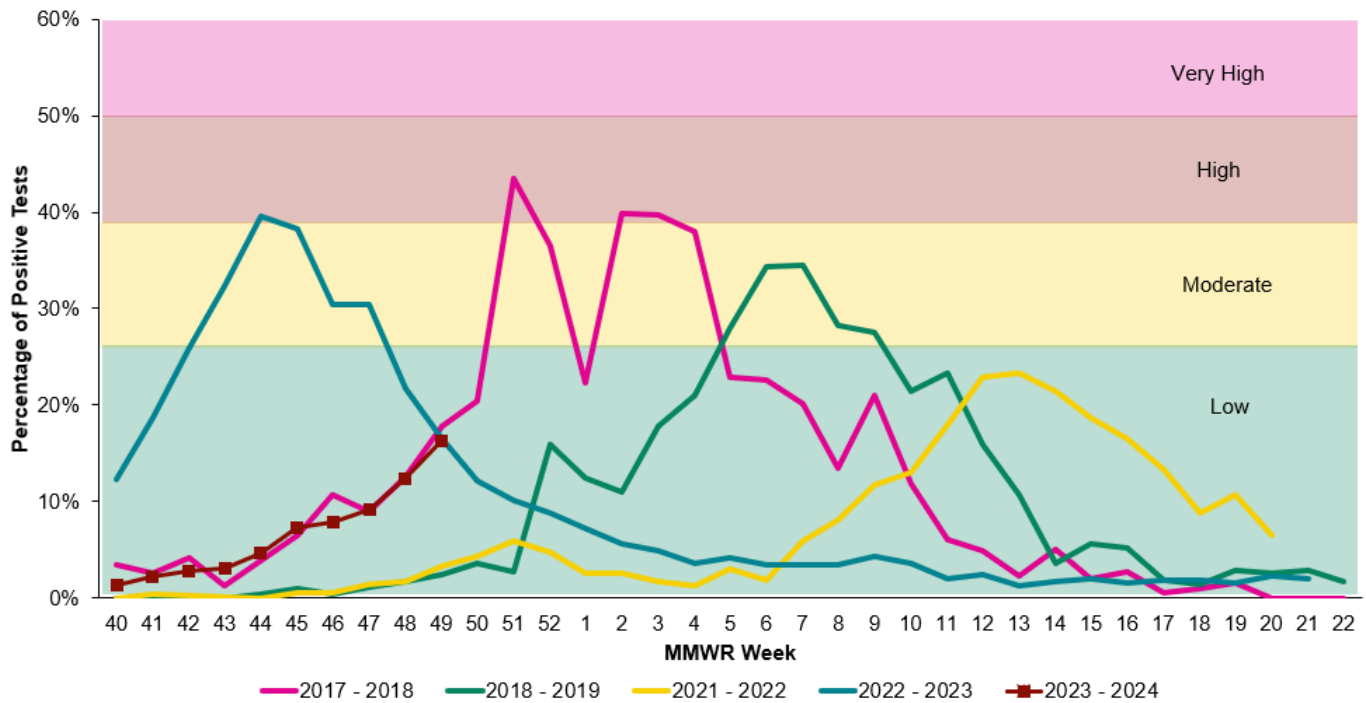
**Figure 4: Number and Percentage of Positive Influenza (PCR), Bexar County, 2023-2024**



The graph in Figure 4 shows the number of positive influenza (PCR) tests for H1N1, H3N2, influenza A (not subtyped), influenza B and percent influenza positive results in Bexar County during the 2023-2024 season.

For the current week, influenza A (not subtyped) has the highest number of positive test results at 204. Sixty-nine results were identified as H1N1. Four results were identified as H3N2, and 207 results were identified as influenza B. The overall percentage of positive tests is 16.2%.

**Figure 5: Percent Positive Hospital Labs, Bexar County, 2017-2024 Seasons**



**Note:** Due to the COVID-19 pandemic the 2019-2020 and 2020-2021 seasons were excluded from calculating the severity thresholds.

The line graph in Figure 5 shows the percentage of positive hospital labs reported by Bexar County NREVSS participants. Data from four previous influenza seasons from 2017-2023 and the current 2023-2024 influenza season are shown.

For 2023-2024 influenza season, the percent positive hospital labs in Bexar County for the current week is 16.2% and is low.

## Sentinel Provider and Public Health Laboratory Testing

Sentinel Providers are recruited throughout Bexar County to submit influenza test results (both antigen, PCR) to Metro Health on a weekly basis. These sites are called Sentinel Providers. These providers also submit specimens for testing to Metro health’s public health laboratory. Eleven facilities are participating this year. The results from the participating providers are summarized in Table 3 below.

**Table 3: Influenza testing performed by Bexar County Sentinel Providers**

	Current Week 49		Previous Week 48		Cumulative since October 1, 2023 Week 40	
	Count	Percent	Count	Percent	Count	Percent
<b>Number of positive specimens</b>	290	32.9%	162	23.0%	1157	22.9%
<b>Influenza A, total</b>	134	▲46.2%	51	31.5%	433	37.4%
<b>PCR</b>	0	0.0%	0	0.0%	0	0.0%
Subtyping performed	0	0.0%	0	0.0%	0	0.0%
<i>H1N1</i>	0	0.0%	0	0.0%	0	0.0%
<i>H3N2</i>	0	0.0%	0	0.0%	0	0.0%
Subtyping not performed	0	0.0%	0	0.0%	0	0.0%
<b>Antigen rapid test</b>	134	100.0%	51	100.0%	433	100.0%
<b>Influenza B, total</b>	156	▼53.8%	111	68.5%	724	62.6%
<b>PCR</b>	0	0.0%	0	0.0%	0	0.0%
<b>Antigen rapid test</b>	156	100.0%	111	100.0%	724	100.0%

**Note:** Influenza data included in this table may not be comparable to previous flu seasons because providers vary by year.

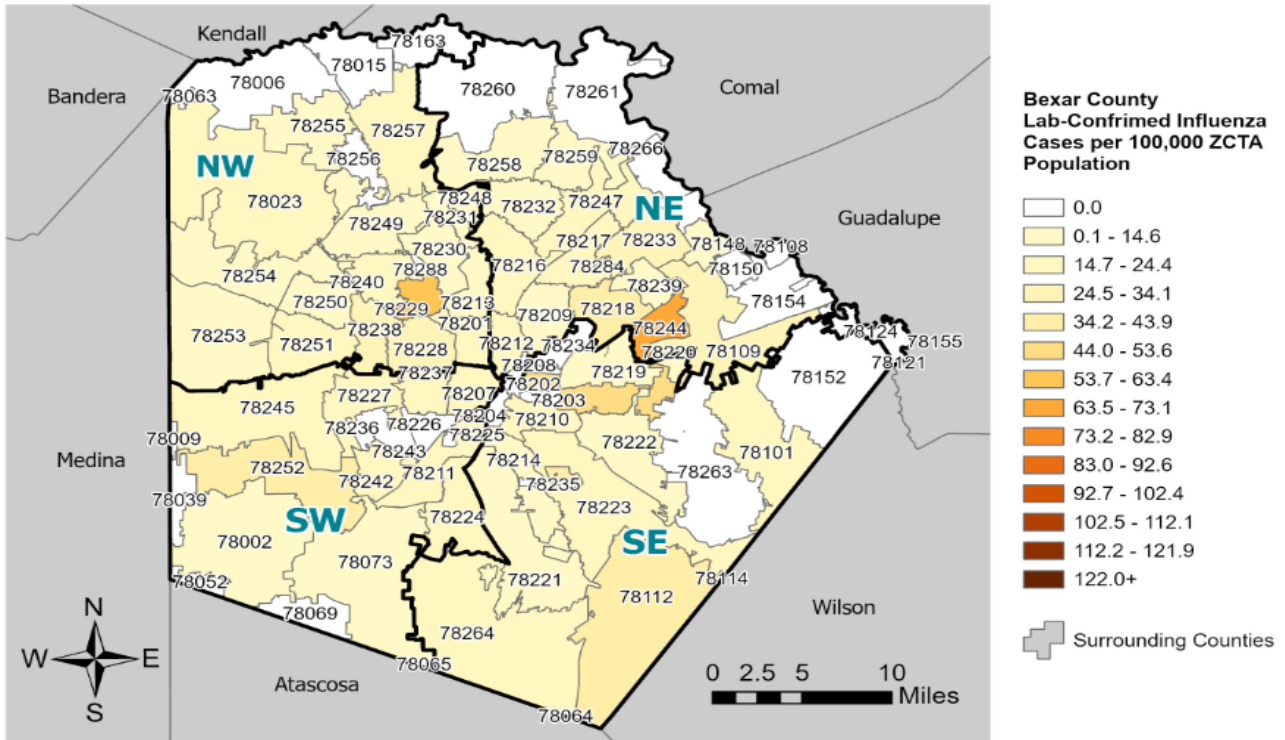
▼Decrease ▲ Increase.

This table provides a summary of influenza testing performed by Bexar County Sentinel Providers for the current and previous week in addition to the cumulative counts and percents since October 1, 2023. The percent of positive specimens tested for the current week is 32.9%. Influenza A percent for the current week is 46.2%, which increased from the previous week (31.5%). Influenza B percent for the current week is 53.8%, a decrease from the previous week (68.5%). Overall, sentinel providers are reporting more influenza B this week than influenza A.



## Maps

**Map 1: Bexar County Reported Lab-Confirmed Influenza Cases by Zip Code for MMWR Week 49**

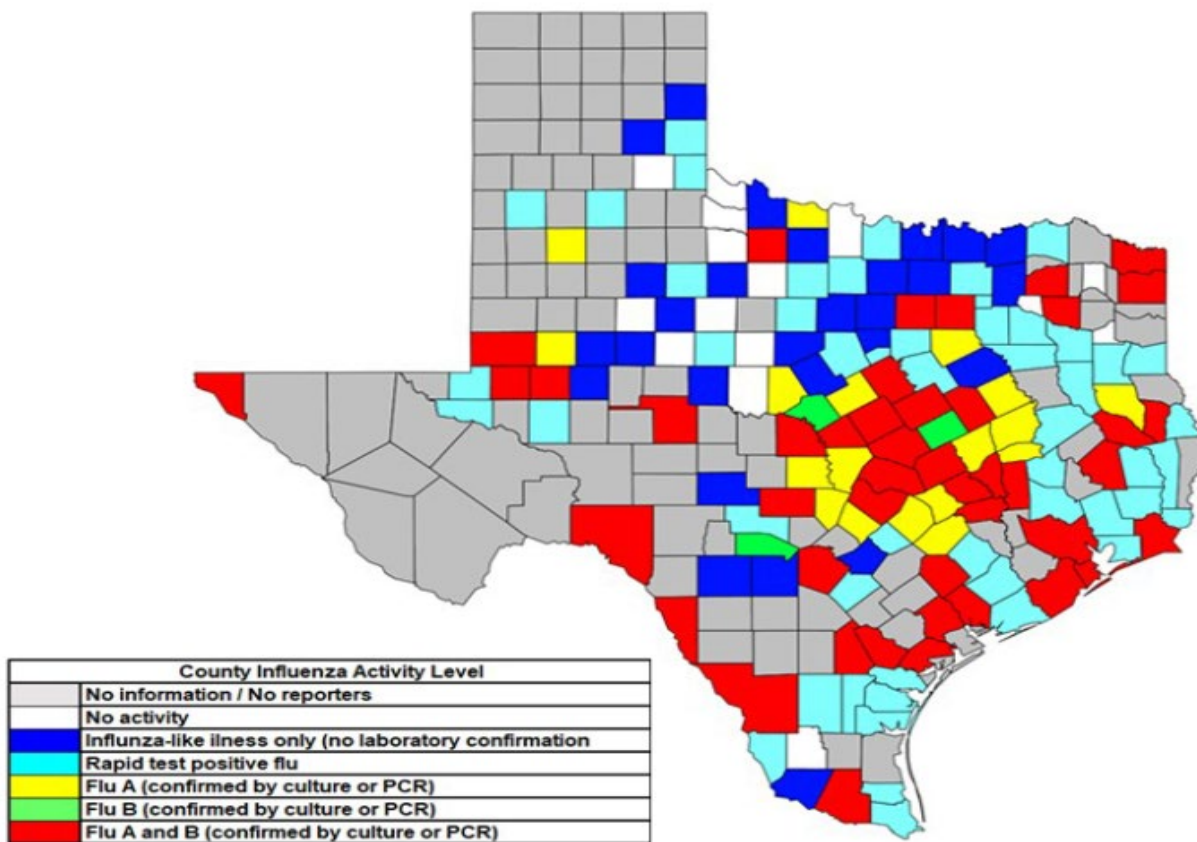


**Note:** Data is not representative of all lab-confirmed influenza cases that visited Bexar County hospitals during the reporting week and the number of hospitals reporting varies each week. Bexar County zip code population data is obtained from American Community Survey 2021 5-year estimates.

The Bexar County map (Map 1) demonstrates the geographic spread of lab-confirmed influenza cases per 100,000 zip code tabulation area (ZCTA) population using GIS. These are based on a quadrant-based system for Bexar County. The map was created using discharge diagnosis information in TxS2.

During Week 49, the geographic spread in Bexar County was **Widespread**.

**Map 2: Texas Map Displaying the Highest Level of Influenza or ILI Activity Reported by County for MMWR Week 49**

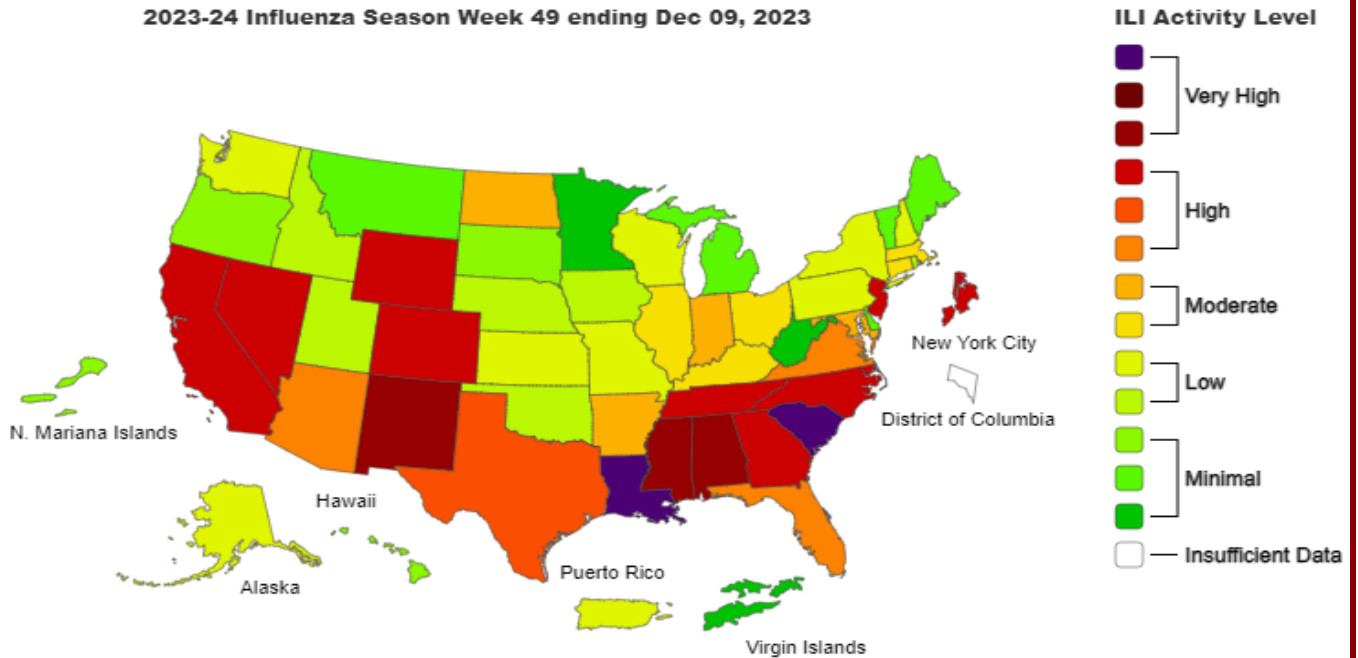


The State of Texas map (Map 2) displays the level of influenza or ILI Activity reported by Counties for Week 49. The majority of influenza cases are not reportable by law in Texas. This map contains data from sentinel sites and only displays influenza and ILI cases that were reported to public health. Positive laboratory results are reported according to specimen collection date, or date received in the laboratory if the former is unknown. The map displays Bexar County as having lab confirmed Flu A and B detected. The majority of reporting counties are experiencing ILI activity and flu detected through rapid tests and there are also counties that show activity of Flu A and B (confirmed by culture or PCR).

Source: [Texas Influenza \(Flu\) Surveillance Data](#)

### Map 3: US Influenza Activity Estimates for MMWR Week 49

2023-24 Influenza Season Week 49 ending Dec 09, 2023



This is a United States map (Map 3) displaying ILI activity level from minimal to very high. The map is made available from the Centers for Disease Control and Prevention, found here: [Weekly US Map: Influenza Summary Update](#). It shows that Texas is in high activity, while some states have moderate activity, few states are having high and very high activity, and this week less than half of the United States are in minimal to low activity.

- **View More Bexar County Weekly Influenza Reports on Metro Health’s Website:**  
[2023 - 2024 METRO HEALTH WEEKLY INFLUENZA REPORT](#)
- **COVID-19** continues to be present in Bexar County. Additional data for can be found on the Metro Health’s website: [COVID-19 San Antonio](#)
- **For questions about influenza surveillance and reporting for Bexar County,** email Metro Health’s Influenza Surveillance Coordinators:  
Purnima Batter at [purnima.batter@sanantonio.gov](mailto:purnima.batter@sanantonio.gov)

## Appendix

### Definitions

- *Influenza-like illness (ILI): Is defined as fever with a temperature of  $\geq 100^{\circ}\text{F}$  and a cough and/or sore throat<sup>1</sup>.*
- *Influenza (flu): is a contagious respiratory illness caused by influenza viruses that infect the nose, throat, and sometimes the lungs. Flu can cause mild to severe illness, and at times can lead to death. Flu symptoms include some or all of these symptoms: fever or feeling feverish/chills, cough, sore throat, runny or stuffy nose, muscle or body aches, headaches, fatigue (tiredness), and some people may have vomiting and diarrhea, though this is more common in children than adults<sup>4</sup>.*
- *Influenza Discharge Diagnosis ICD Codes: J09, J10, and J11.*
  - Query in the Discharge Diagnosis and ICD10 Discharge Diagnosis fields utilizing the Texas Syndromic Surveillance System (TxS2).
- *Quadrants: Four geographic areas that separate Bexar County into Northwest (NW), Northeast (NE), Southwest (SW), and Southeast (SE).*
- *Influenza geographic spread activity:*
  - No activity = No or low lab-confirmed influenza activity.
  - Sporadic = Isolated cases of lab-confirmed influenza in Bexar County.
  - Localized = Lab-confirmed influenza within one to two Bexar quadrants.
  - Widespread = Lab-confirmed influenza in three or more Bexar quadrants.

### Indicator Methodologies:

- *Activity Level Measurements:*

Intensity thresholds are calculated for activity measures to assess influenza season severity; for Bexar County these measurements are 1) ILI Activity and 2) Hospital Laboratory Percentage of Positive Tests. Thresholds are determined by looking at historical data to assign severity levels (low, moderate, high, very high) to weekly data points as well as overall seasons using the MEM (moving epidemic model) methodology ([mem package in R](#)). This methodology was published in the [American Journal of Epidemiology](#), October 2017. Due to the COVID-19 pandemic the 2019-2020 and 2020-2021 seasons were excluded from calculating the intensity thresholds. The indicator with the highest intensity level is used to determine the weekly influenza activity level.

Intensity Level	Definitions	
	ILI Activity	Hospital Percent of Positive Tests
Low	< 8.5%	< 25.1%
Moderate	8.5% - 13.5%	25.1% - 39.0%
High	13.6% - 18.0%	39.1% - 50.0%
Very High	$\geq 18.1\%$	$\geq 50.1\%$

- ***Bexar County Map Breaks:***

Collected influenza diagnosis data is used to produce a measure of influenza diagnosis by Zip Code. Breaks are based on the rate of individuals diagnosed with influenza per 100,000 ZCTA population and are compared to the mean influenza diagnosis rate per 100,000 ZCTA population during weeks with little or no influenza virus circulation during 2023. The first break is calculated as a rate below the mean. The second break is calculated as less than one standard deviation above the mean. The third break is calculated as a rate more than one standard deviation but less than two standard deviations above the mean and so on until the last break. *This methodology was published on CDC's [U.S. Influenza Surveillance: Purpose and Methods](#).*

- ***Seasonal Baseline:***

Bexar County seasonal baseline was calculated using a method similar to CDC's National/Regional baseline calculation. For further information on this method, please visit: [U.S. Influenza Surveillance: Purpose and Methods](#). Baseline for Texas was provided by the Texas Department of State Health Services.

### **References:**

1. Centers for Disease Control and Prevention, National Center for Immunization and Respiratory Disease (NCIRD). U.S. Influenza Surveillance: Purpose and Methods
2. Biggerstaff, M., Kniss, K., Jernigan, D.B., Brammer, L., Bresee, J., Garg, S., Burns, E., & Reed, C. (2018). Systematic Assessment of Multiple Routine and Near Real-Time Indicators to Classify the Severity of Influenza Seasons and Pandemics in the United States, 2003–2004 Through 2015–2016, *American Journal of Epidemiology*, 187(5), 1040–1050. <https://doi.org/10.1093/aje/kwx334>
3. Texas Department of State Health Services, Texas Syndromic Surveillance (TxS2). DSHS Texas Syndrome Surveillance
4. Centers for Disease Control and Prevention, National Center for Immunization and Respiratory Disease (NCIRD). Key Facts About Influenza