

# PANTHER SPRINGS PARK



PARKS & RECREATION

## TRAIL MAP

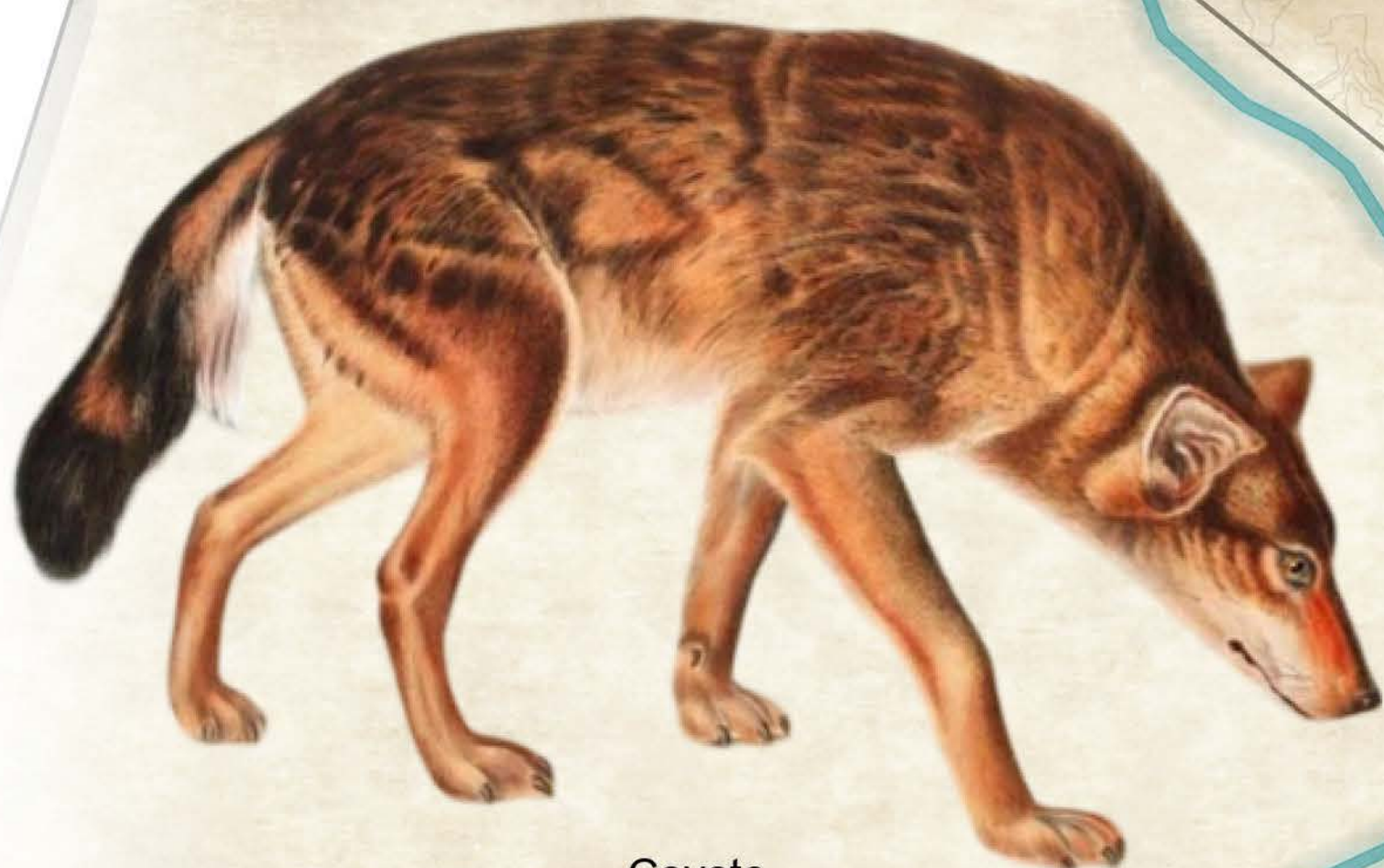


**Please Note:** Park Hours are sunrise to sunset, daily. Pets allowed on leash.

Report suspected cases of illegal dumping by calling **3-1-1** or **210-207-6000**.

Panther Springs Creek

Panther Springs Loop



Coyote  
*Canis Latrans*

Wyatt's Way

22635 Wilderness Oak  
San Antonio, TX 78260  
(210) 207-3000

[sa.gov/parksandrec](http://sa.gov/parksandrec)

### LEGEND

- Entrance
- Parking
- Dog Park
- Water Fountain
- Pavilion
- Portable/Compost Toilet
- Parman Branch Library



Sweet Acacia  
*Acacia farnesiana*

- Natural Surface
- Paved Surface



Paved trails meet  
ADA accessibility  
standards

### EMERGENCY

In case of emergency, call 9-1-1

| Paved Trail Lengths  |                 |
|----------------------|-----------------|
| Trail Name           | Length in Miles |
| Panther Springs Loop | 2.16            |
| Wyatt's Way          | 0.42            |

0 0.07 0.15 0.3 Miles

Elevation contours sourced from the 2017 San Antonio River Authority Index of Elevation Contours. Map prepared by the San Antonio Parks and Recreation Department and last updated on September 9, 2025

The GIS data used in this map is for reference and/or informational purposes only and is not intended to be used as legally recorded maps or surveys. The City of San Antonio gives no warranty, either expressed or implied, as to the accuracy, reliability, or completeness of the displayed information.