



**SPORTS & ENTERTAINMENT DISTRICT**

# COMMUNITY PLANNING WORKSHOPS

## ***Tonight's Agenda***



- 6:00 PM – Sign-in Process
- 6:10 PM – Project Overview and Q+A
- 6:50 PM – Hands-on mapping activity
- 7:30 PM – Each table shares top 3 ideas
- 8:00 PM – Event concludes

# What is a **Sports and Entertainment District?**



## **Active**

**Designated** area within a city that **combines** sports venues, entertainment facilities, retail spaces, restaurants, and residential areas into a **unified, vibrant hub**.

---



## **Experience**

Designed to attract both locals and tourists by offering a wide range of **accessible activities and experiences**, including attending sports events, concerts, dining, shopping, and participating in various recreational and cultural activities.



# Example Sports and Entertainment Districts



“Deer District”

**FISERV Forum**  
*Milwaukee*



“Power & Light District”

**T-Mobile Center**  
*Kansas City*

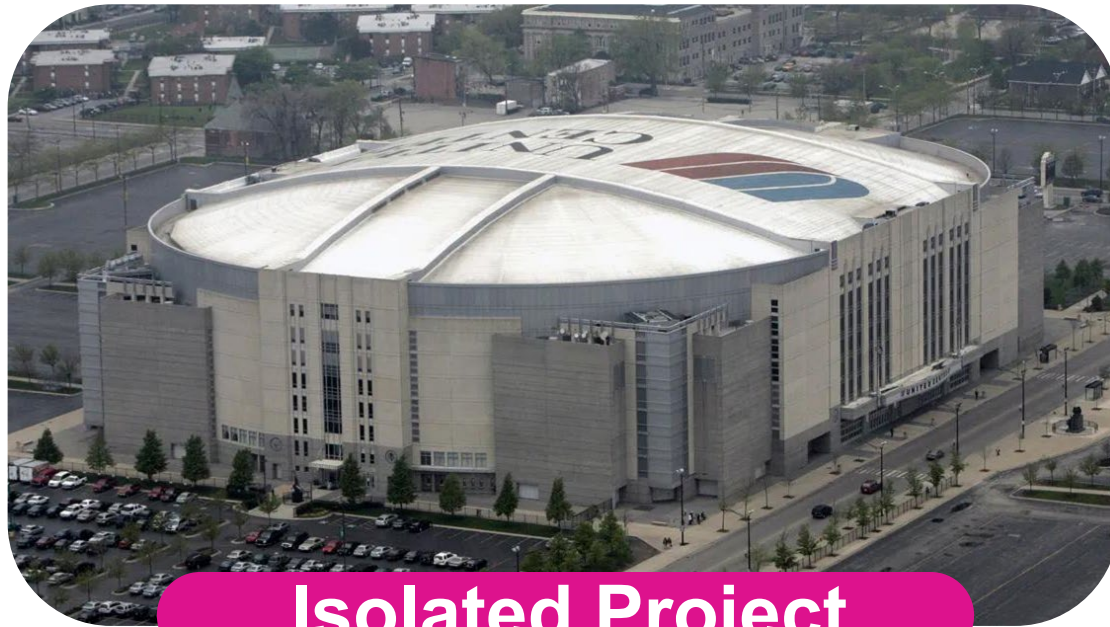


“The Battery”

**Truist Park**  
*Atlanta*



# Why **create a District** instead of **separate projects**?



**Isolated Project**



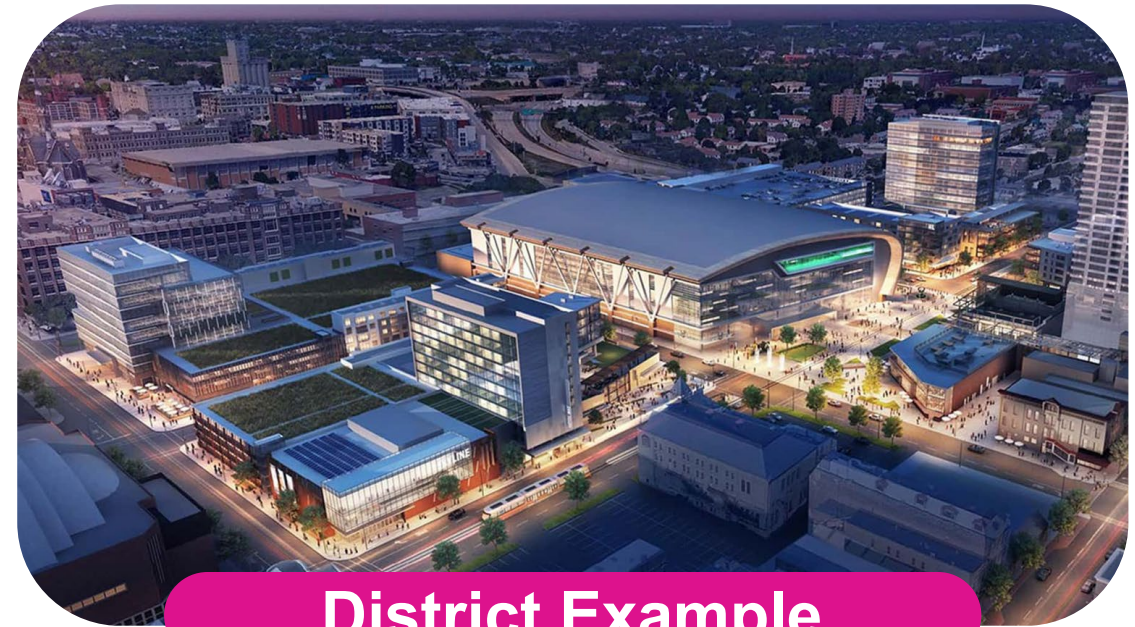
**Individual** branding efforts



**Isolated** mobility planning



**Separate** cost burdens



**District Example**



**Unified** branding amplifies identity



**Integrated** mobility enhances access

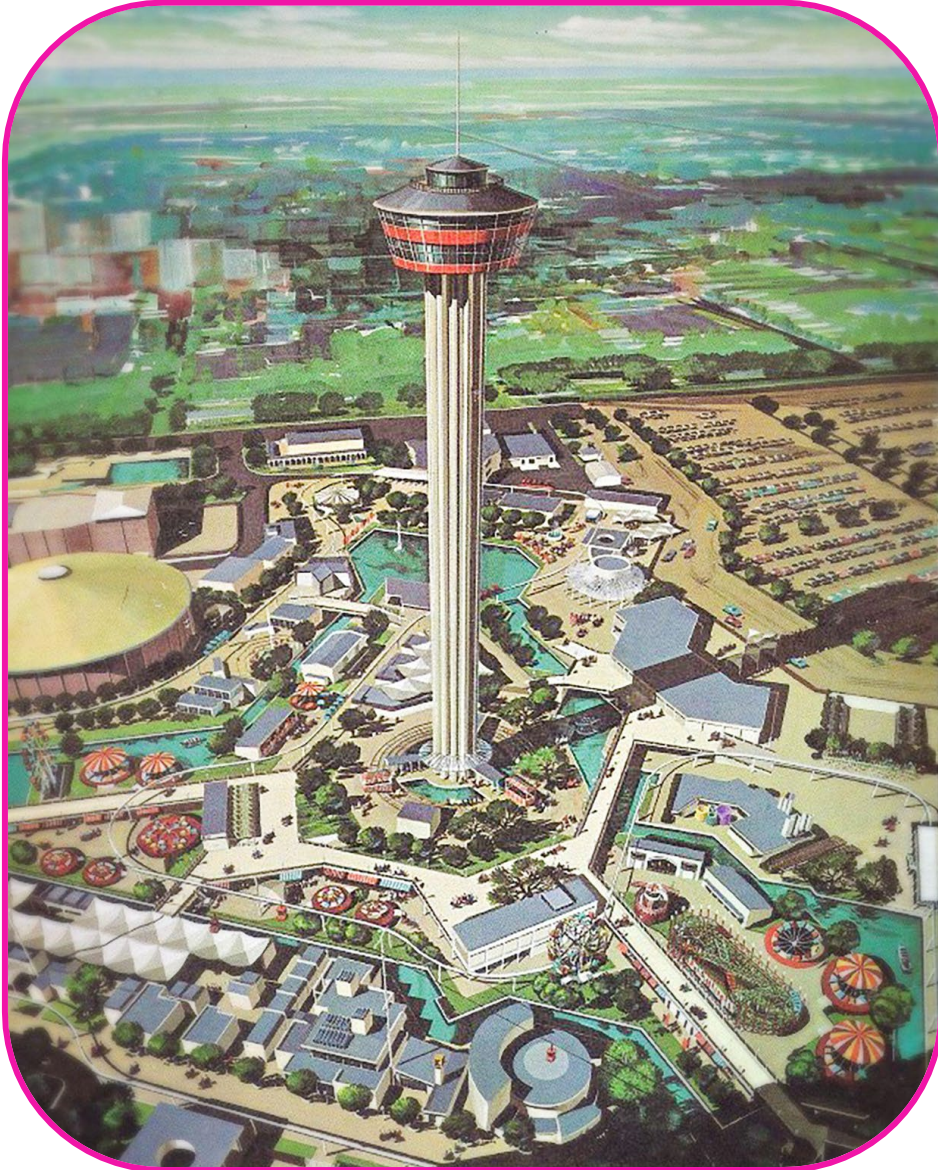


**Shared** infrastructure reduces cost

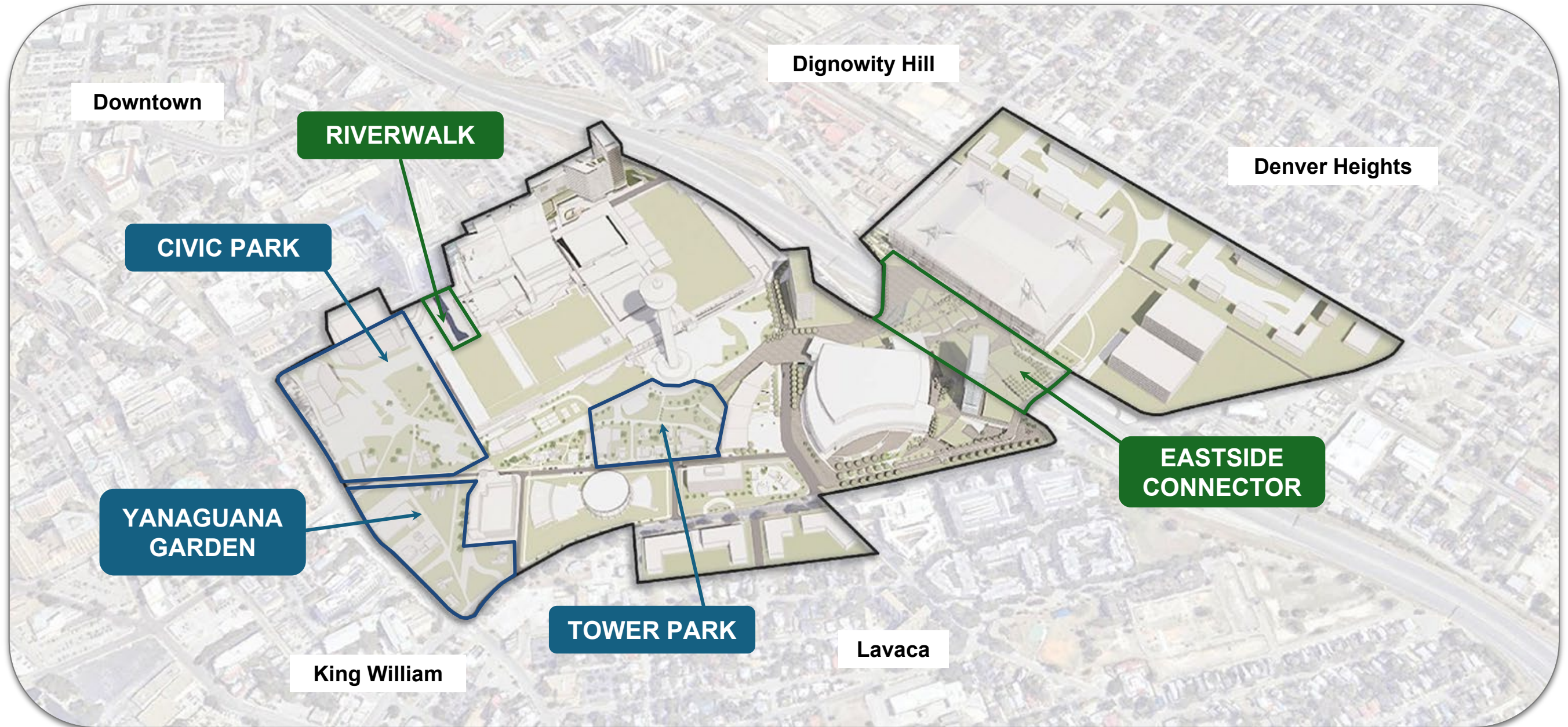


# ***Hemisfair*** *District*

---

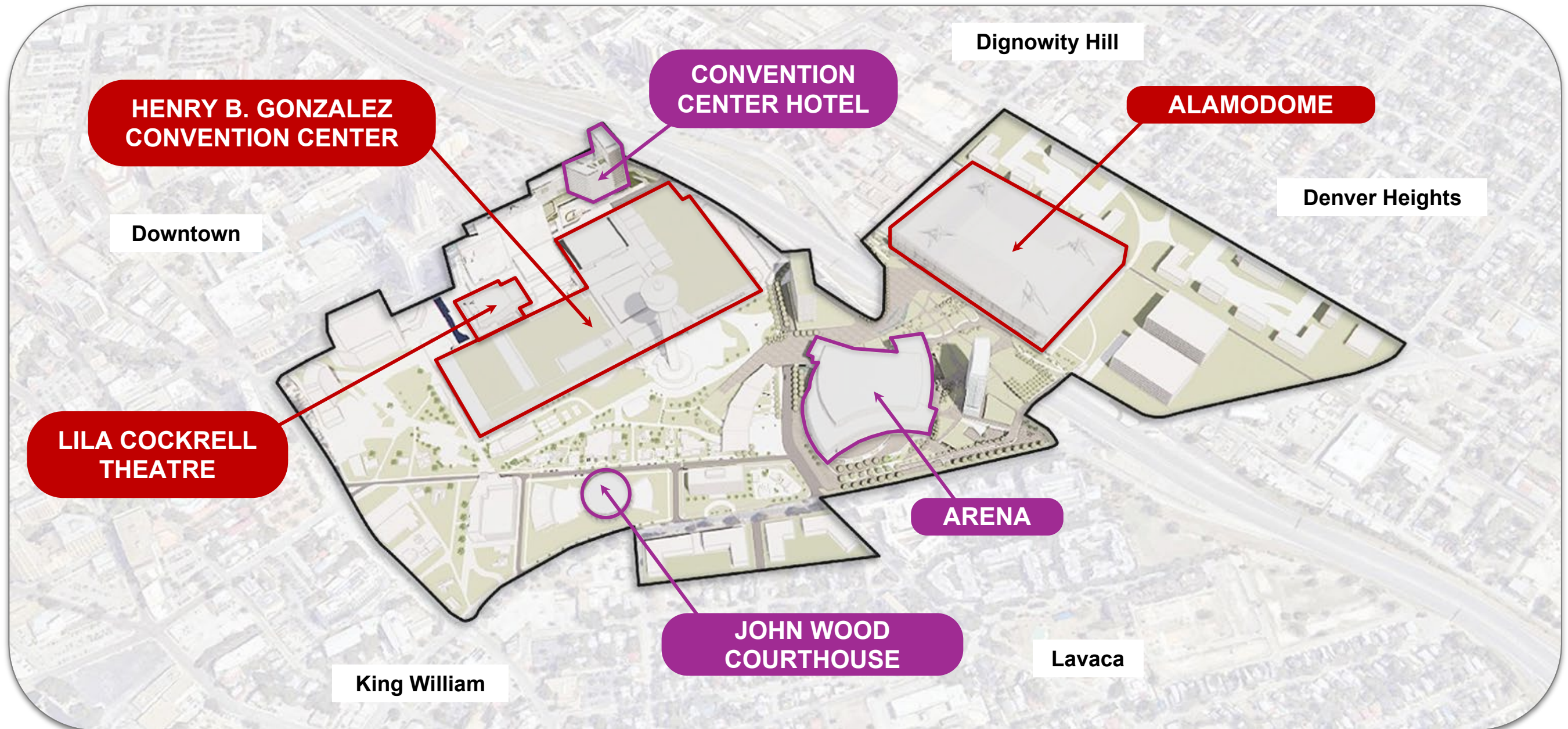






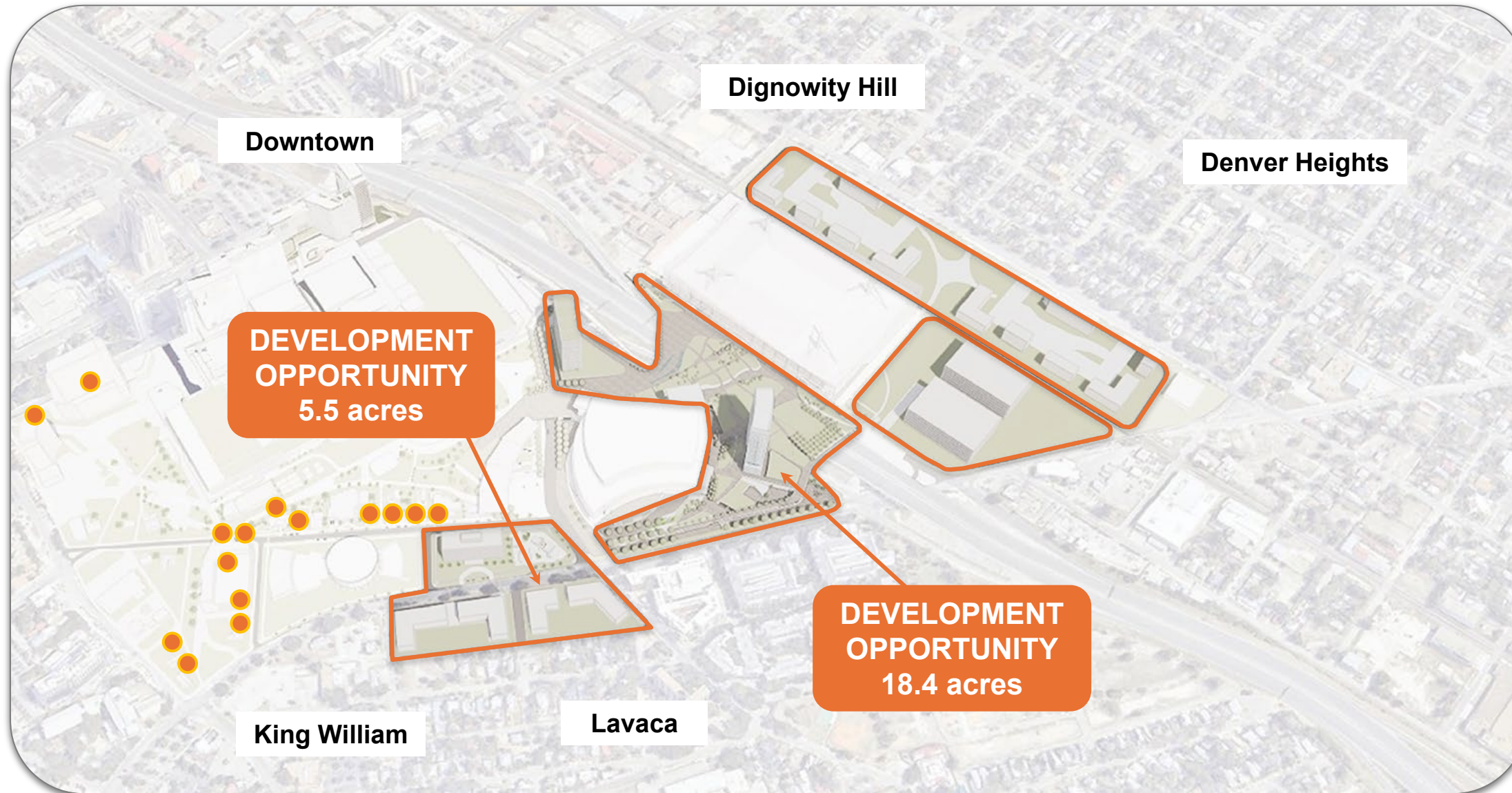
**More Community Space**





**More Sports & Entertainment Facilities**





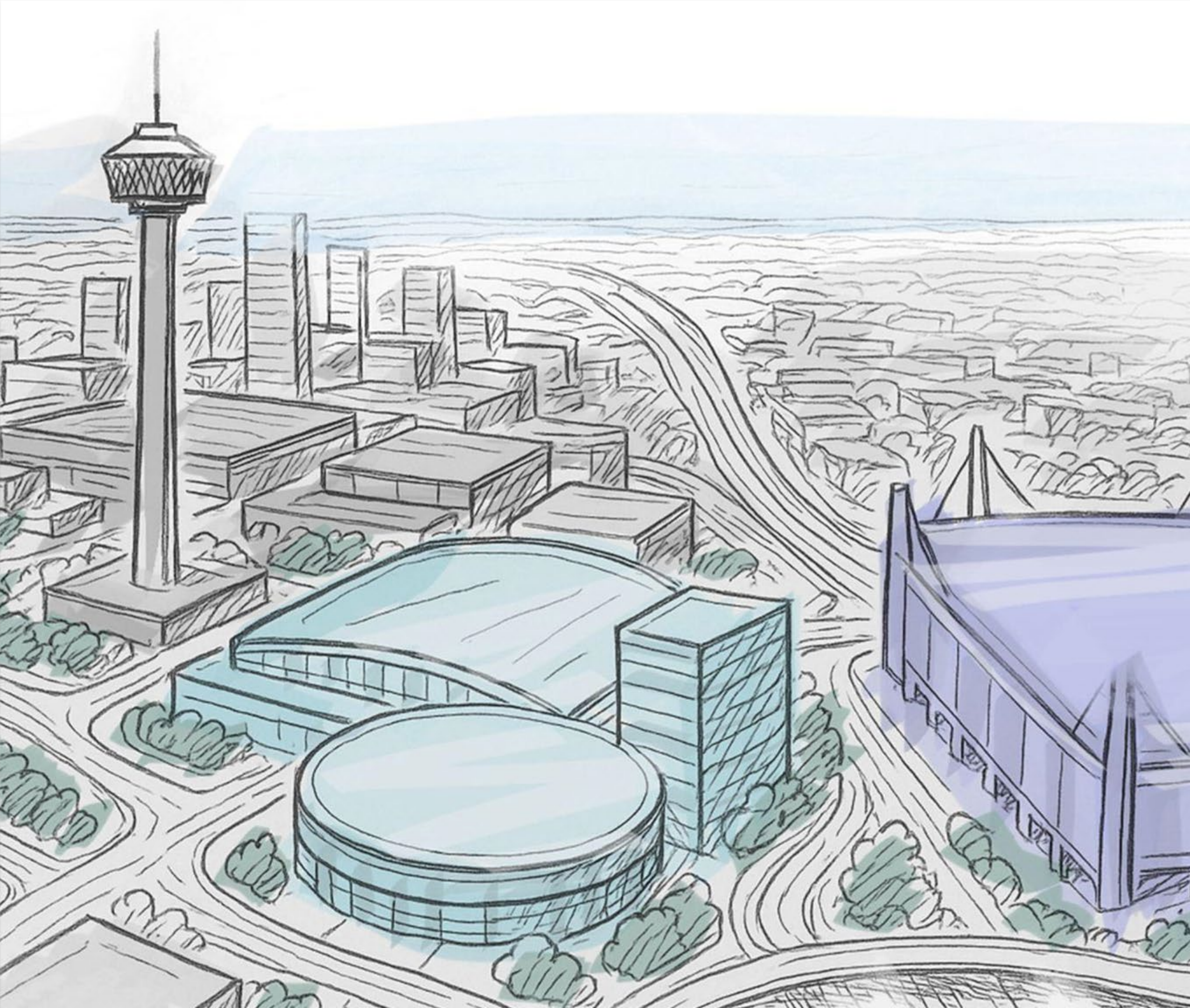
**More Mixed Use Development**



# Paying for the Sports & Entertainment Facilities

Project	Tourists	Developers	Spurs	Private Corporations
	Hotel Occupancy Tax, Project Finance Zone, Venue Tax	Ad Valorem Taxes and Ground Leases paid by the Developers	Facility Lease and Team Contribution	Private Equity, Tax Credits, Naming Rights, etc
Convention Center Expansion	✓			
Alamodome	✓			✓
Wood Courthouse	✓			✓
Convention Center Hotel				✓
Spurs Arena	✓	✓	✓	✓





## Common Questions

*Will the City fix the traffic situation?*

*Where will I park?*

*What about affordable housing?*



# *Transportation & Parking*



**Reliable Bus  
Transportation**



**Traffic  
Improvements**



**Parking  
Opportunities**



**Pedestrian  
Connections**



**Leverage  
Technology**



# ***Transportation & Pedestrian Mobility Assessment***

 Signal Improvements

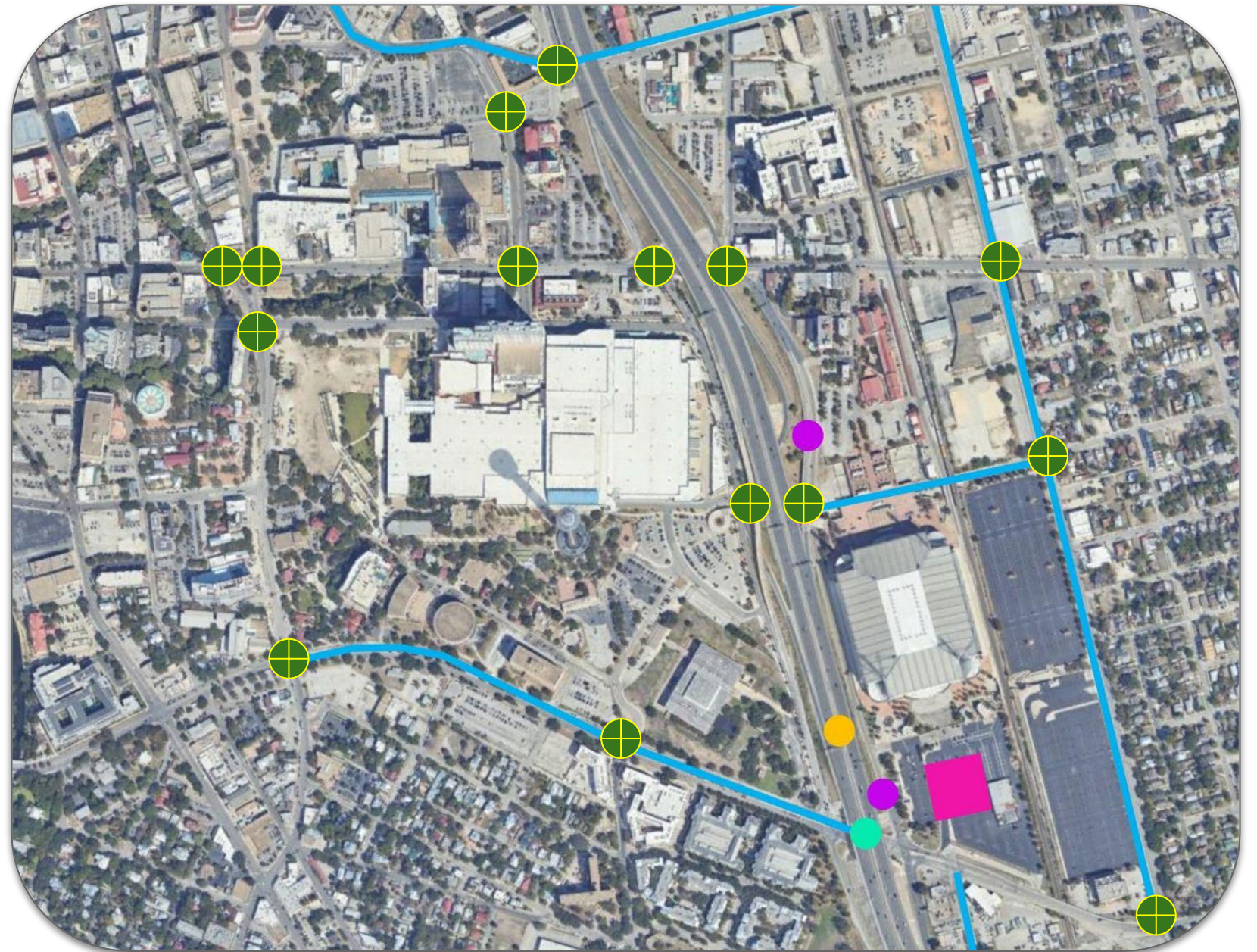
 Pedestrian Bridge

 Street Improvements

 SPUI

 On -Ramp

 Garage



**Assessing** Opportunities to ***Improve Traffic Flow & Pedestrian Safety.***



# ***Peak-Time*** **Parking Demand** ***Assessment***

## **Leverage Existing Supply**

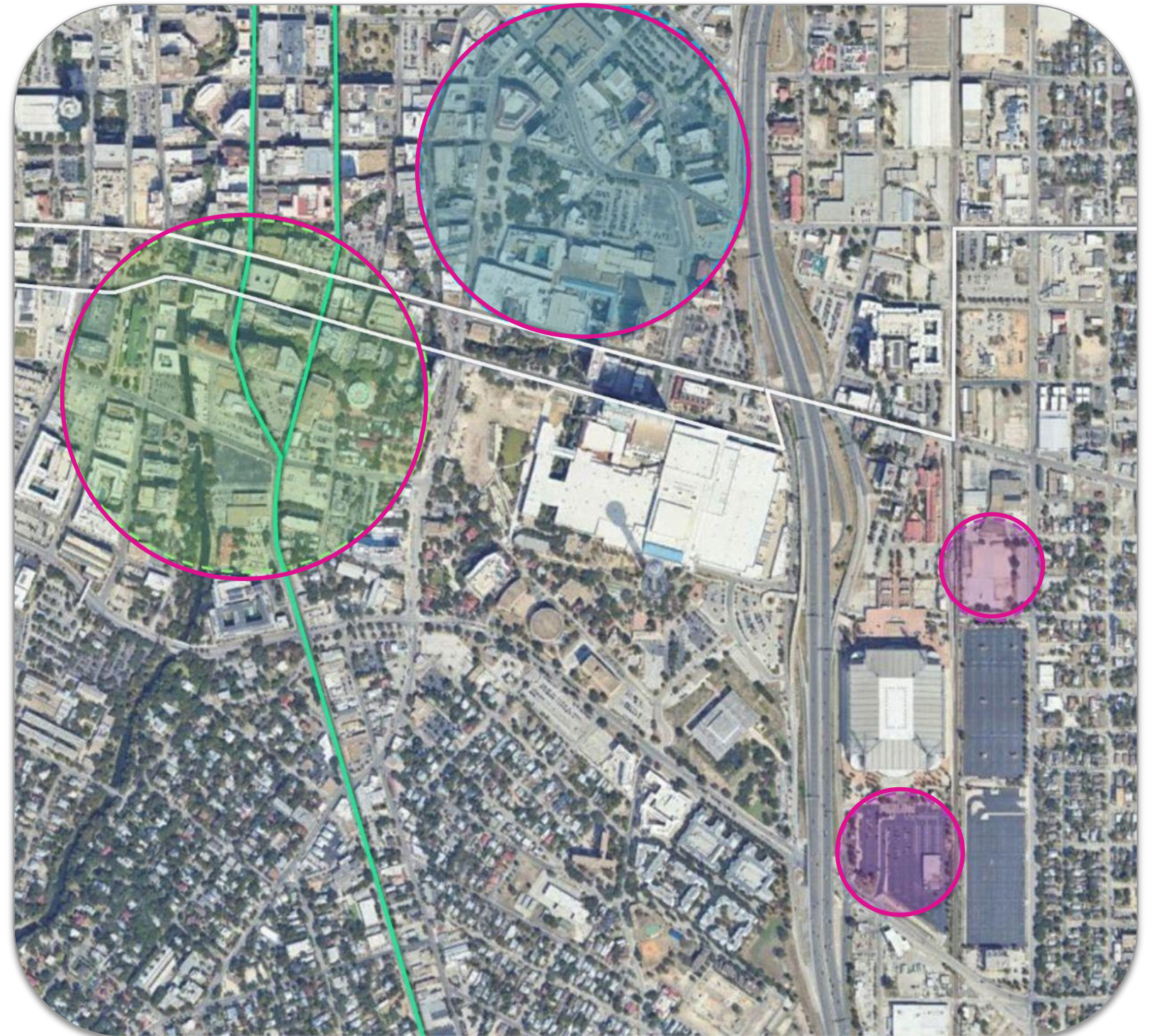
Partner with **private property** owners to include their parking in the event inventory.

## **Minimize New Construction**

Use public-private **partnerships** to meet demand for event parking.

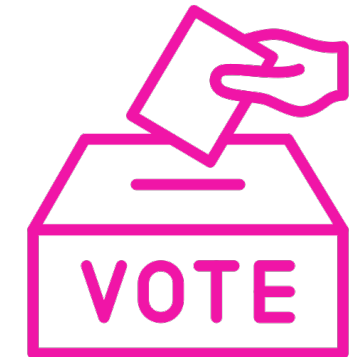
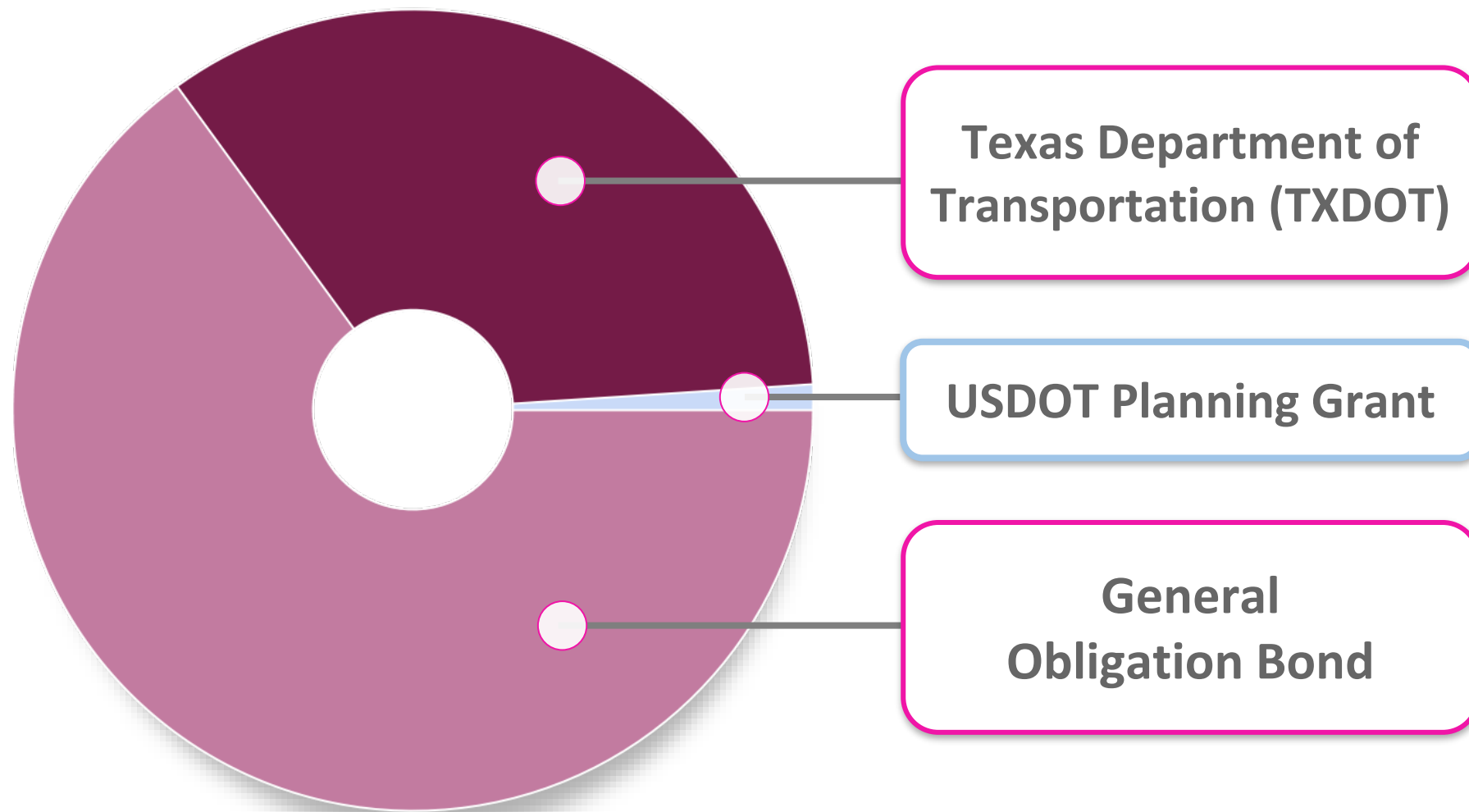
## **Connect to Facilities**

Use **micro-mobility** solutions to move visitors between parking and venues





# Paying for Infrastructure?



**San Antonio taxpayers** may **vote** on a bond for local infrastructure this **fall**.



# Affordable Housing

## Transit Oriented Development

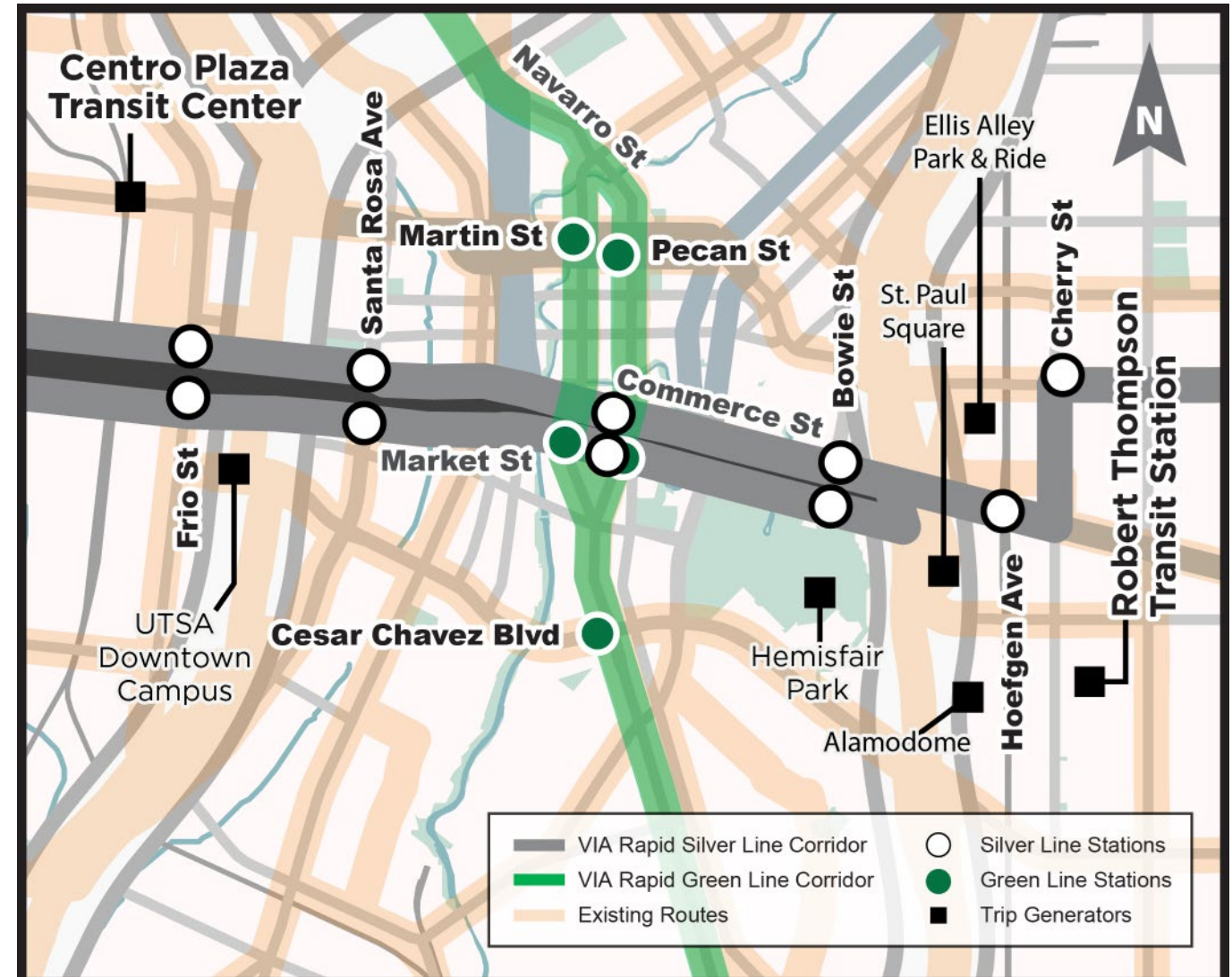
Facilitate affordable housing development along transit lines and within ¼ mile of the proposed silver and green lines.

## Preserve Housing

Provide gap financing or other loans or grants to rehabilitate and restore existing affordable housing in the area.

## Land Bank

Purchase vacant single-family lots or houses that are available for purchase and redevelop as single-family affordable housing. Purchase multifamily lots within ¼ mile of bus stop on green and/or silver line.





# *Timeline*

**June-July**

**August**

**November**

**Community  
Workshops**

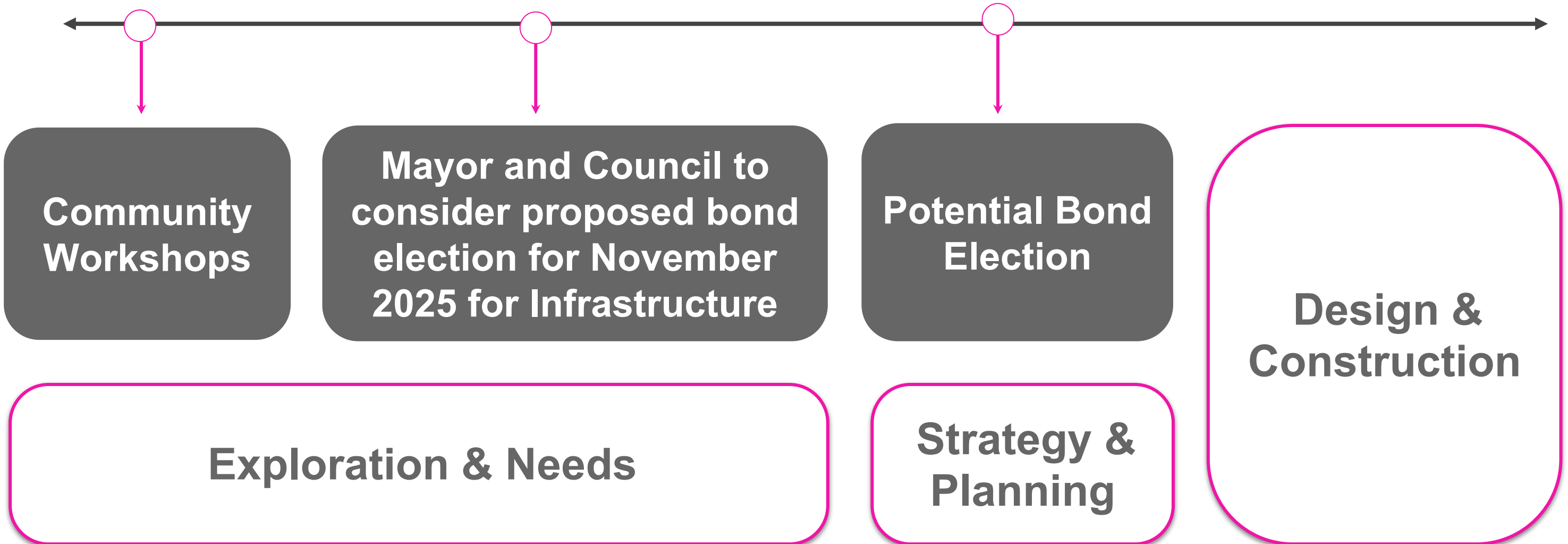
**Mayor and Council to  
consider proposed bond  
election for November  
2025 for Infrastructure**

**Potential Bond  
Election**

**Design &  
Construction**

**Exploration & Needs**

**Strategy &  
Planning**











**Community  
Engagement**



# ***Tonight's Activity Instructions***

-  **Write down** what you really think — your ideas matter
-  We're **gathering** all your input — it all counts
-  **Share** your **thoughts** with your table
-  Keep your **presentation to 3 minutes** please





*What's next!*  
*Thank You!*

## **Stay Connected**

**Visit:** [SA.gov/sportsdistrict](https://sa.gov/sportsdistrict)  
to get updates.

## **Tomorrow**

**Open House:**  
**12:00PM - 7:00PM**

**Focus Groups:**  
**Public & Community**  
**Space:** (1:30PM - 2:30PM)  
**Local Business:**  
(3:00PM - 4:00PM)