

# **City of San Antonio**

## **2017 Bond Program Development Community Committee Meeting**

### **Streets, Bridges & Sidewalks**

Presented by: Sheryl Sculley, City Manager

**October 11, 2016**

# AGENDA



- 2017 Bond Program Overview
- Community Committee Role & Responsibilities
- 2012 Bond Program Update
- Committee Schedule & Timeline
- Open Meetings Act & Code of Ethics
- Staff Professional Recommendations
- Bond Committee Discussion/Analysis
- Citizens to be Heard
- Next Steps

# 2017 – 2022 BOND PROGRAM

## \$850 Million



STREETS, BRIDGES  
& SIDEWALKS

\$450 Million



DRAINAGE &  
FLOOD CONTROL

\$144 Million



PARKS &  
RECREATION

\$116 Million



FACILITIES

\$120 Million



NEIGHBORHOOD  
IMPROVEMENTS

\$20 Million

53%

17%

14%

14%

2%

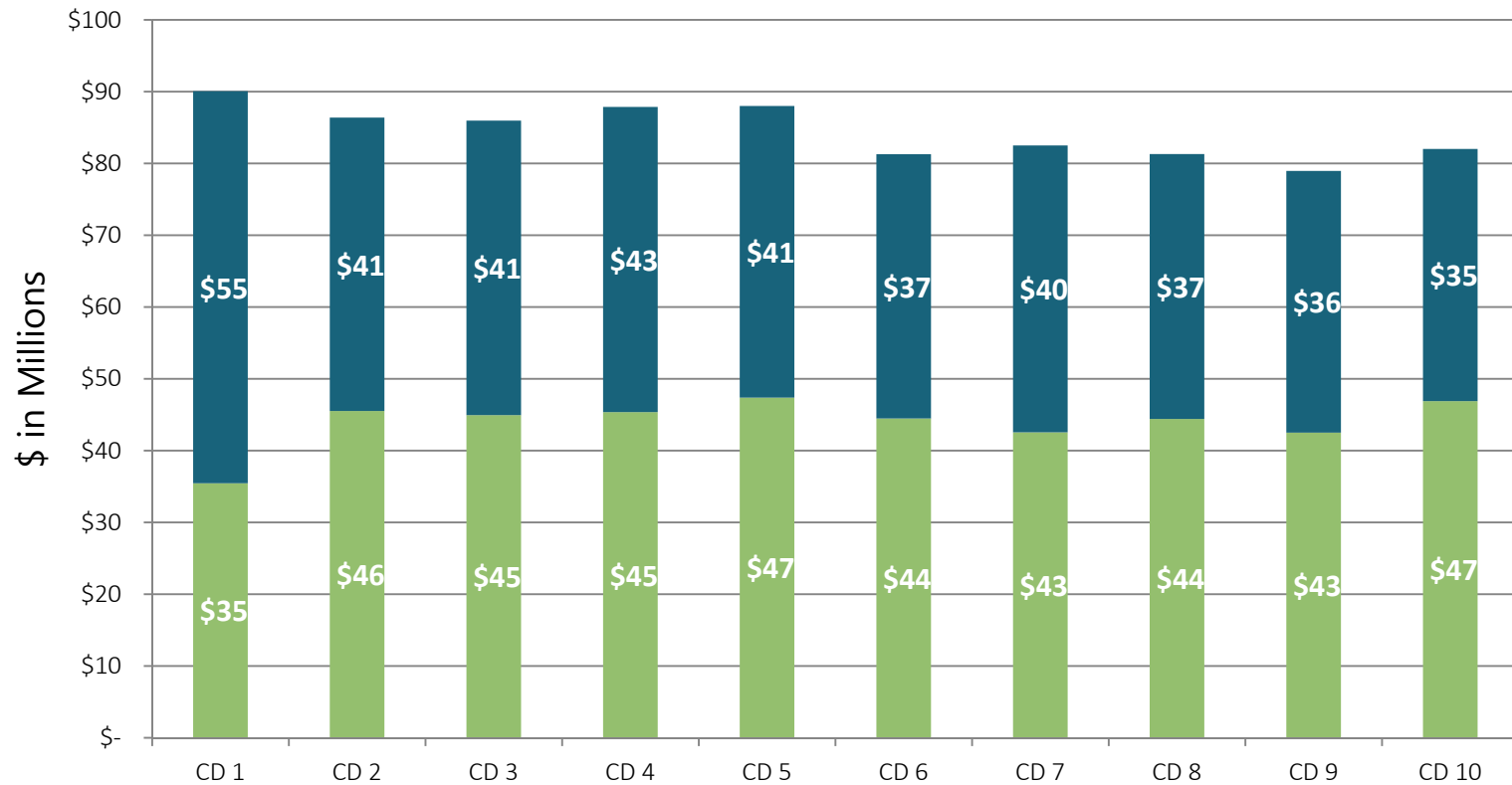
3

# Rough Proportionality Methodology

- Identify greatest needs then recommend projects, as opposed to identify funding by geographic areas then recommend projects
- Areas of City have different infrastructure needs
- Project selection provides roughly equal investment across City
- Needs addressed through variety of programs: Bond Program, Five – Year Infrastructure Management Program and Linear Creekway Program



# Rough Proportionality | Staff Recommendation



2017 Bond Program	4.17%	5.35%	5.29%	5.34%	5.58%	5.23%	5.00%	5.22%	5.00%	5.52%
IMP & Parks CIP	13.32%	9.97%	10.00%	10.37%	9.91%	8.98%	9.75%	9.01%	8.89%	8.57%
<b>Overall</b>	<b>7.15%</b>	<b>6.86%</b>	<b>6.82%</b>	<b>6.97%</b>	<b>6.98%</b>	<b>6.45%</b>	<b>6.55%</b>	<b>6.45%</b>	<b>6.27%</b>	<b>6.51%</b>



## Committees

- Two (2) citizen appointments by the Mayor to serve as Co-Chairs
- Three (3) citizen appointments per City Council District (total of 30)
- Total of 160 citizen appointees serve as diverse group with varied backgrounds and experiences from across the city

# TRI-CHAIRS

PROPOSED 2017-2022

**BOND**

**PROGRAM**

City of San Antonio

**Eddie Aldrete**

Senior Vice President, IBC Bank

**Carri Baker**

Chief of Operations, Linebarger Goggan  
Blair & Sampson, LLP

**Darryl Byrd**

Founding Principal  
ULTRate Strategy and Consulting, LLC

# Committee Membership

## Co-Chairs

**David Heard**

**Jim Reed**

## Members

Michelle Casillas	District 1	Ed Cano	District 4	Frank Fonseca	District 7
Sonny Collins	District 1	Gyna Juarez	District 4	Mike Garza	District 8
Rosa Valdez	District 1	Raymond Garza	District 5	John Kelly	District 8
Rose Hill	District 2	Yvette Benavides	District 5	Steve Perez	District 8
Gordon Benjamin	District 2	Gloria Martinez	District 5	Art Downey	District 9
Leticia Rivera	District 2	Lucy M. Hall	District 6	Patty Gibbons	District 9
Reba Malone	District 3	Oscar Rosalez	District 6	Marilyn Jowdy	District 9
Candie Beltran	District 3	Melinda Smith	District 6	Abel Guzman	District 10
George Garcia	District 3	Bianca Maldonado	District 7	Nathan Cobler	District 10
Gilbert Morales	District 4	Ed Garza	District 7	Clayton Perry	District 10



## Committee Member Roles

- Serve in an advisory role
- Obtain community input
- Consider potential projects
- Recommend final list of projects to City Council for Proposed 2017 Bond Program







## Guiding Principles

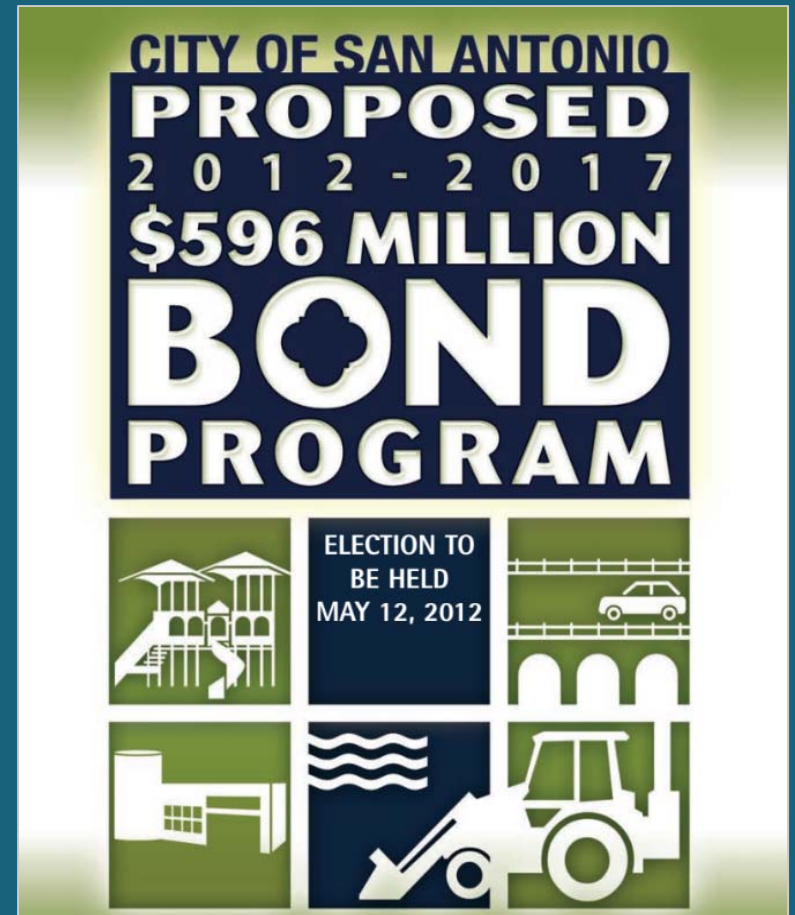
1. Support SA Tomorrow Growth Plan
2. Coordinate with Other Agencies
3. Increase Connectivity
4. Leverage Funds
5. Project Continuation
6. Investment in Major Corridors
7. Improve & Support Vision Zero
8. Complete Streets
9. Environmental Sustainability
10. Operating & Maintenance Budget Impact
11. Rough Proportionality





## 2012 Bond Program

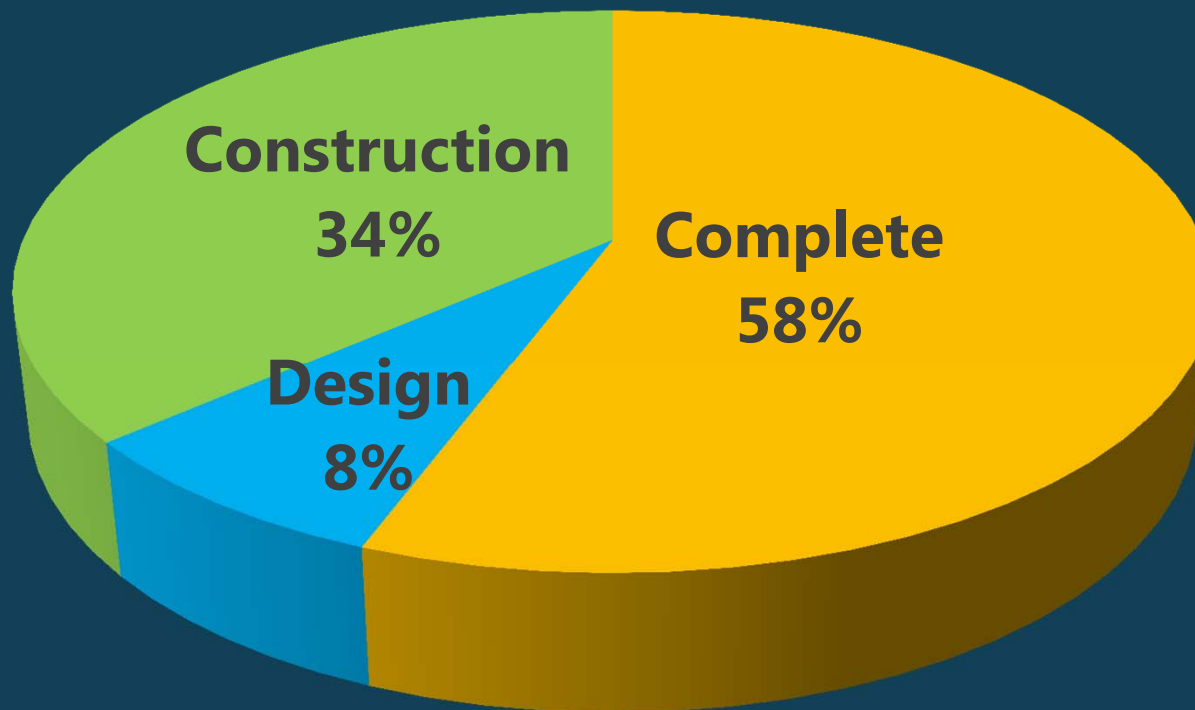
- 140 Projects totaling \$596 million
- Improving streets, bridges, sidewalks, drainage facilities, parks, libraries and other facilities



# 2012 BOND PROGRAM PROJECT STATUS

**92%**

Completed or  
Under Construction



## STATUS SUMMARY:

- COMPLETE (81)
- CONSTRUCTION (48)
- DESIGN (11)



## Committee Meetings

- All meetings held at Central Library Auditorium located at 600 Soledad Street
- Meetings will be open to the public
- Parking will be free

■ Facilities

■ Streets

■ Parks & Recreation

■ Drainage

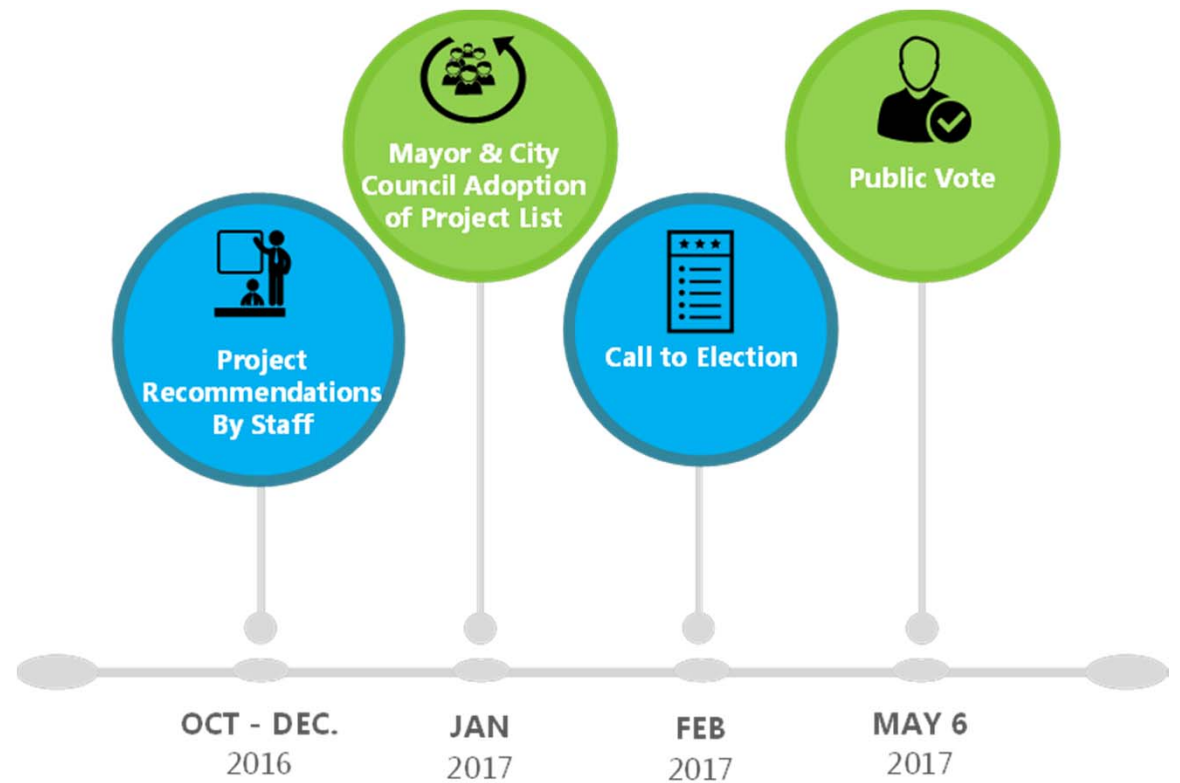
■ Neighborhoods

OCTOBER						
M	T	W	T	F	S	S
26	27	28	29	30	1	2
3	4	5	6	7	8	9
10	11	12	13	14	15	16
17	18	19	20	21	22	23
24	25	26	27	28	29	30
31						

NOVEMBER						
M	T	W	T	F	S	S
	1	2	3	4	5	6
7	8	9	10	11	12	13
14	15	16	17	18	19	20
21	22	23	24	25	26	27
28	29	30				

DECEMBER						
M	T	W	T	F	S	S
			1	2	3	4
5	6	7	8	9	10	11
12	13	14	15	16	17	18
19	20	21	22	23	24	25

# 2017 Bond Program Timeline







# Ethics and Meeting Guidelines

Presented by: Andy Segovia, City Attorney Office



## Conflicts of Interest

- A committee member should not take any official action that he or she should reasonably know is likely to affect the economic interest of:
  - ❑ the committee member;
  - ❑ their parent, child, spouse or other close relative;
  - ❑ a member of the committee member's household;
  - ❑ the outside employer of committee member, spouse, adult child or parent;





## Conflicts of Interest

- ❑ business entity in which economic interest exists;
- ❑ business or nonprofit entity for which committee member serves as director or officer; or
- ❑ business with which committee member has negotiated employment or business opportunity





## Unfair Advancement of Private Interests

- A committee member may not use their official position:
  - ❑ to unfairly advance or impede private interests;
  - ❑ to represent to a person that he or she may provide an advantage to that person; or
  - ❑ to acquire an interest in a matter pending before the city if city action will directly or indirectly affect that interest
- ❑ A committee member may not represent any person, group or entity before any of the committees, including their own





## Gifts

- Committee member should not accept any gift from any source that:
  - influences or rewards official conduct; or
  - the committee member knows or should know is being offered with the intent to influence official conduct

### GIFT EXCEPTIONS

- Items of nominal value
- Meals up to \$50, no more than \$500 total in calendar year from a single source
- Admission to training or education program if related to official duties
- Admission to events attended in a ceremonial capacity or as an official representative of city
- Gifts from friends that are in keeping with the personal (non-city) relationship





## Meeting Protocols

- “Meeting” excludes:
  - ❑ Social functions
  - ❑ Conventions and workshops
- “Meeting” can include electronic communications
- Quorum is a simple majority of committee members

A “**Meeting**” is any deliberation between a quorum of members at which any public business is discussed or considered, or at which any formal action is taken.





## Meeting Requirements

- A **quorum** of the committee should be present in the room to convene a meeting
- May take action only on agenda items posted





## Open Sessions

- Body must vote in public open session;
- Public may attend meetings
- The Committee Chair may allow public commentary or “citizens to be heard” and may limit time for comments.





# Staff Professional Recommendations

Presented by: Mike Frisbie, P.E., Director/City Engineer

# Streets, Bridges & Sidewalks

**59 Projects | \$450 Million**

Recommending projects to construct or improve streets and street amenities, sidewalks and multimodal facilities in coordination with established transportation plans of the City and other agencies.

- Road reconstruction and widening
- Utilities
- Pedestrian Safety
- Medians, turn lanes, multi-use/bike paths
- Curbs, sidewalks, driveway approaches





# Streets, Bridges & Sidewalks

**59 Projects | \$450 Million**

Project Name	CD	\$	Amount
Alamo Area Streets	1	\$	13,736,000
Broadway (Houston St. to Hildebrand)	1, 2	\$	43,000,000
Camaron (Houston to Fox Tech) Pedestrian Improvements	1	\$	4,500,000
Commerce Street (Santa Rosa to Frio)	1	\$	14,000,000
Commerce Street (St. Mary's to Santa Rosa)	1	\$	6,000,000
District 1 Pedestrian Mobility	1	\$	10,000,000
Flores / Fredericksburg (Five Points) Intersection Improvements	1	\$	3,000,000
Hemisfair Internal Streets Phase 2	1	\$	5,000,000
Main and Soledad (Pecan to Navarro)	1	\$	12,000,000
San Saba (Dolorosa to West Martin)	1	\$	7,000,000
Santa Rosa (Cesar Chavez to Houston)	1	\$	14,000,000
South Alamo (Market to Cesar Chavez)	1	\$	9,000,000
St. Mary's Street Improvements (Mistletoe to Josephine)	1	\$	7,000,000
District 2 Pedestrian Mobility	2	\$	6,000,000
Lamar (Austin to New Braunfels)	2	\$	2,500,000
New Braunfels Phase 1 (Houston to Burleson)	2	\$	9,000,000

# Streets, Bridges & Sidewalks

**59 Projects | \$450 Million**

Project Name	CD	\$	Amount
Rittiman / Gibbs Sprawl Overpass	2	\$	6,000,000
Applewhite Intersection Improvement (South of Watson Road)	3	\$	1,000,000
Brooks City Base (Research Plaza to South Presa) Stinson Corridor	3	\$	10,000,000
Brooks City Base (S. New Braunfels to Lyster Road to Aviation Landing)	3	\$	10,400,000
Brooks City Base-Inner Circle (Louis Bauer to Research)	3	\$	3,000,000
District 3 Pedestrian Mobility	3	\$	9,000,000
Goliad (Fair Avenue to East Southcross)	3	\$	12,937,000
Mission Road (San Antonio River to SE Military Drive) (World Heritage)	3	\$	2,000,000
Roosevelt Avenue (Hwy 90 to Loop 410) (World Heritage)	3	\$	8,000,000
South Presa (SE Military to Southcross) (World Heritage)	3	\$	5,000,000
Southcross (IH 37 to IH 35) (World Heritage)	3	\$	5,000,000
World Heritage Trail Signage & Wayfinding	3	\$	5,000,000
Bynum Road (W. Gerald to SW Military)	4	\$	7,730,000
District 4 Pedestrian Mobility	4	\$	7,000,000
Zarzamora / Applewhite Intersection	4	\$	900,000
District 5 Pedestrian Mobility	5	\$	10,000,000

# Streets, Bridges & Sidewalks

**59 Projects | \$450 Million**

Project Name	CD	\$	Amount
Lone Star Area Streets	5	\$	5,000,000
Probandt (Alamo to Highway 90)	5	\$	3,000,000
Roosevelt Corridor Improvements (IH10 to St. Mary's UPRR Crossing)	5	\$	7,000,000
West Commerce Corridor (Frio to Colorado)	5	\$	10,000,000
Zarzamora Overpass @ UPRR / Frio Street	5	\$	10,000,000
District 6 Pedestrian Mobility	6	\$	5,000,000
Enrique Barrera Pkwy Corridor Phase 1	6	\$	9,000,000
Heath Road & Grissom Road Intersection	6	\$	2,620,000
Military Drive (Dead end to Potranco) & Ingram Connector (Dead end to Military)	6	\$	10,000,000
District 7 Pedestrian Mobility	7	\$	2,000,000
O.P. Schnabel Park Entrance Improvements	7	\$	1,100,000
Woodlawn Area Streets (Lake Blvd, Mary Louise Drive & Shadwell Drive)	7	\$	8,036,000
DeZavala Corridor (IH 10 Frontage Road to Lockhill Selma)	8	\$	15,500,000
Hardberger Park	8, 9	\$	7,500,000
Medical Center Phase X- Ewing Halsell / Louis Pasteur Intersection	8	\$	7,170,000
Medical Center Right Turn Lane on Louis Pasteur at Babcock	8	\$	1,600,00

# Streets, Bridges & Sidewalks

**59 Projects | \$450 Million**

Project Name	CD	\$	Amount
Prue Road (Babcock Road to Laureate Drive)	8	\$	27,600,000
Wurzbach Corridor Improvements	8,9	\$	2,000,000
Bitters Road Intersections & Sidewalks (Savannah Pass to Blanco Road)	9	\$	5,080,000
District 9 Pedestrian Mobility	9	\$	4,000,000
Evans Road Intersection & Corridor Improvements	9	\$	2,700,000
Hardy Oak and Huebner Road Extensions	9	\$	6,300,000
Jones Maltsberger / Burning Trail Intersection Improvement	9	\$	1,600,000
1604/Bulverde Road Turnarounds	10	\$	500,000
Bulverde Phase 1 (Butterleigh to North of Quiet Meadows)	10	\$	20,000,000
Harry Wurzbach / Austin Highway Connectors	10	\$	3,000,000
Public Art	CW	\$	4,584,000

# Alamo Area Streets

## \$13.7 Million

Street improvements in Alamo area as identified in the ongoing Alamo Master Plan. This project will leverage state and private funding.

### APPLIED GUIDING PRINCIPLES & SA TOMORROW CATEGORIES:

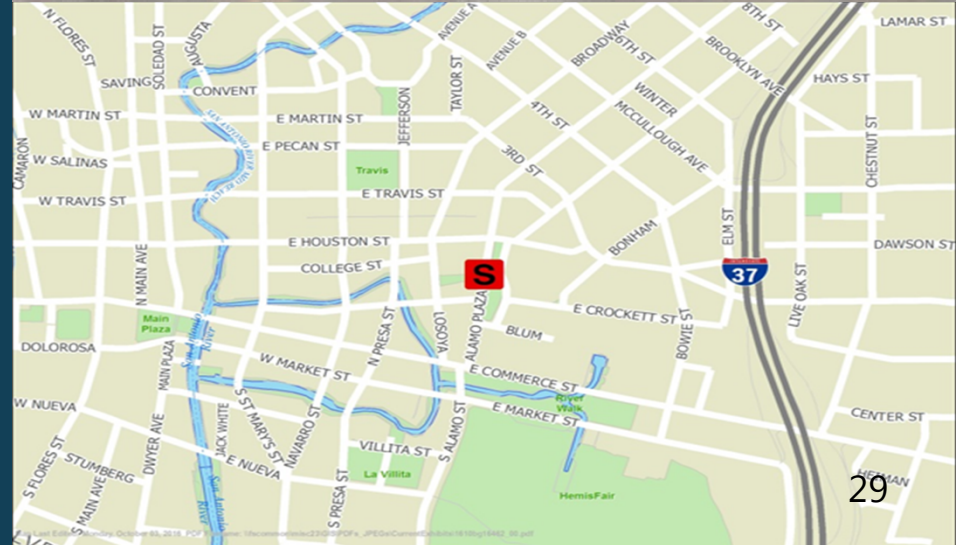
- 1, 2, 3, 4, 7, 8, 10



STRATEGIC  
DEVELOPMENT



TRANSPORTATION  
& CONNECTIVITY



# Broadway (Houston St. to Hildebrand) \$43 Million

Develop and implement a complete street concept to include roadway reconstruction, curbs, sidewalks, driveway approaches, bicycle amenities, lighting, drainage and traffic improvements. This will be done in coordination with TxDOT as part of turn-back agreement.

## APPLIED GUIDING PRINCIPLES & SA TOMORROW CATEGORIES:

- 1, 2, 3, 4, 5, 6, 7, 8 & 10



TRANSPORTATION  
& CONNECTIVITY



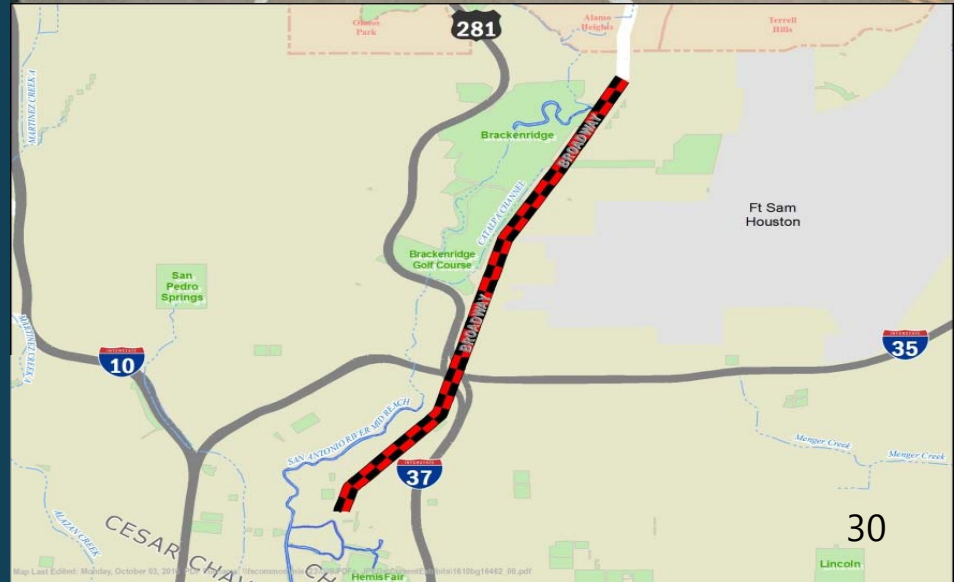
PUBLIC FACILITIES  
& COMMUNITY SAFETY



COMMUNITY HEALTH  
& WELLNESS



STRATEGIC  
DEVELOPMENT





# Cameron (Houston St. to Fox Tech) Pedestrian Improvements \$4.5 Million

Develop pedestrian corridor on Cameron and Kingsbury Streets from Houston Street to North Flores / Fox Tech.

## APPLIED GUIDING PRINCIPLES & SA TOMORROW CATEGORIES:

- 1, 2, 3, 7, 8, 9 & 10



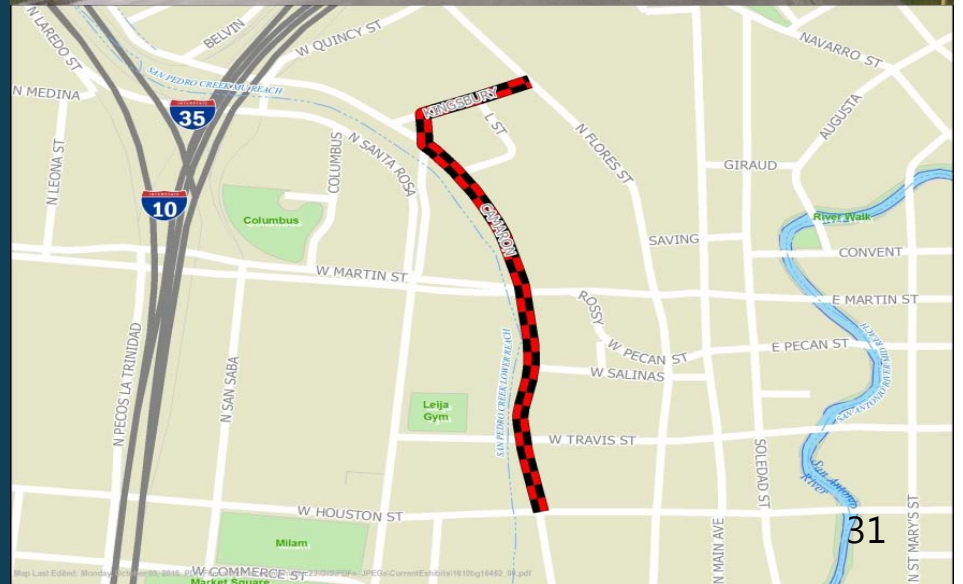
TRANSPORTATION  
& CONNECTIVITY



PUBLIC FACILITIES  
& COMMUNITY SAFETY



COMMUNITY HEALTH  
& WELLNESS



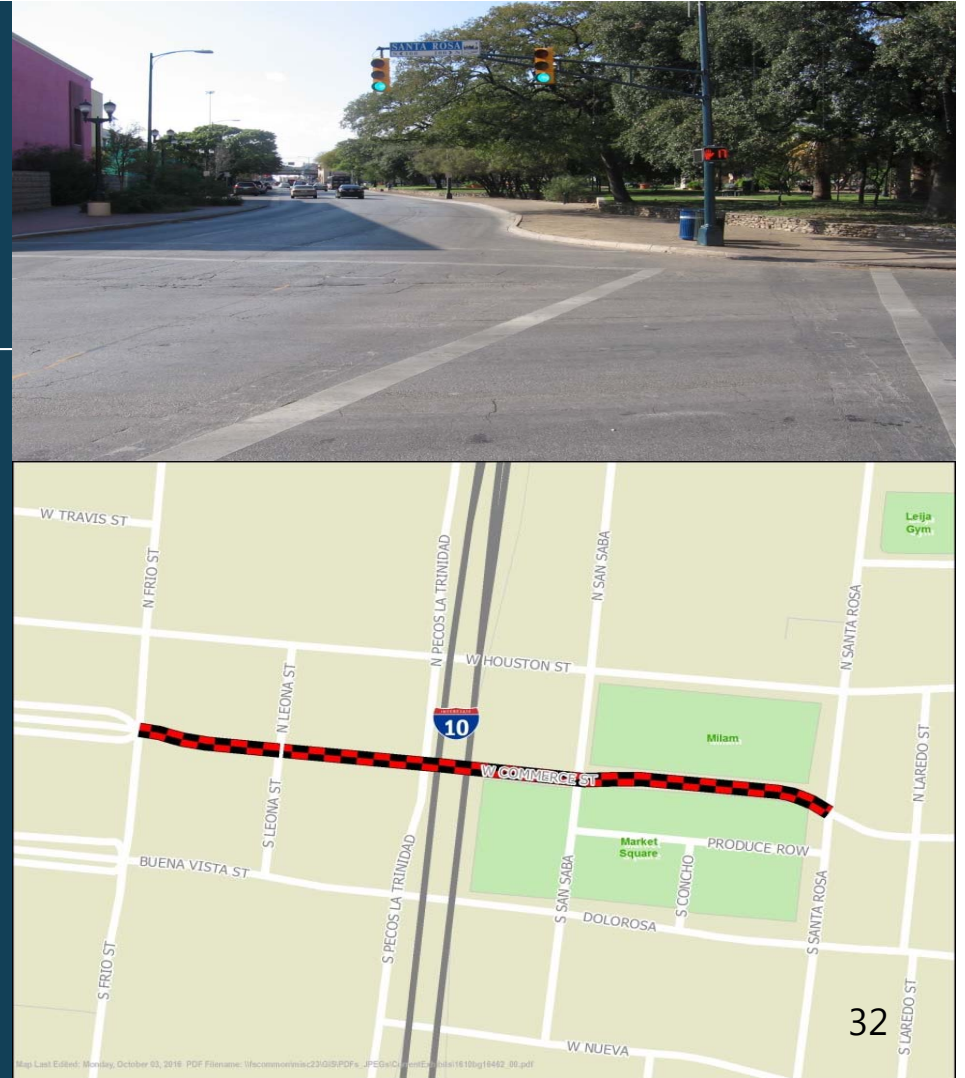
# Commerce Street (Santa Rosa to Frio)

## \$14 Million

Reconstruct roadway to include pedestrian amenities and streetscape improvements. This is a continuation of the 2012 bond program project.

### APPLIED GUIDING PRINCIPLES & SA TOMORROW CATEGORIES:

- 1, 2, 5, 6, 7, 8 & 10





# Commerce Street (St. Mary's to Santa Rosa) \$6 Million

Reconstruct Commerce to include pedestrian amenities and streetscape improvements. Project will also provide wayfinding signage in the downtown area. These funds will supplement the 2012 bond program project.

## APPLIED GUIDING PRINCIPLES & SA TOMORROW CATEGORIES:

- 1, 2, 5, 6, 7, 8, & 10



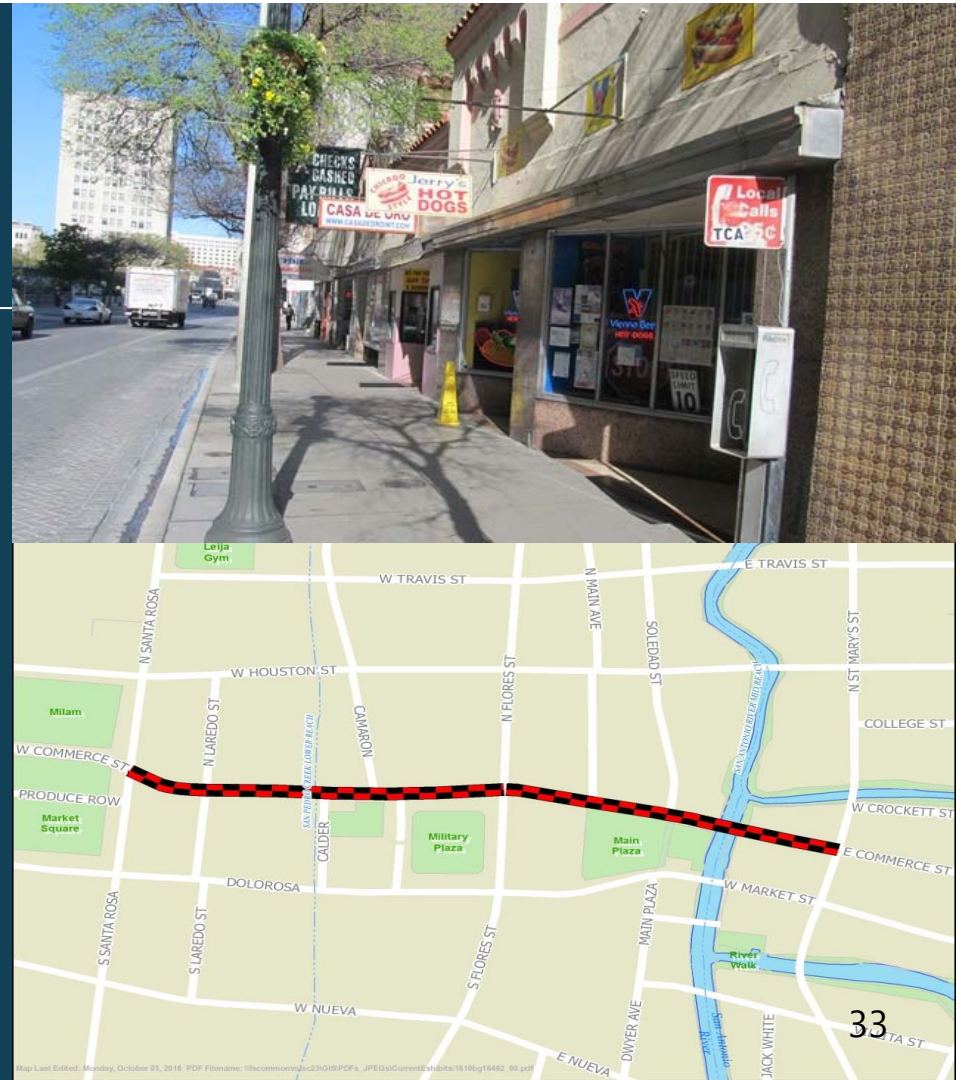
TRANSPORTATION  
& CONNECTIVITY



PUBLIC FACILITIES  
& COMMUNITY SAFETY



COMMUNITY HEALTH  
& WELLNESS



# District 1

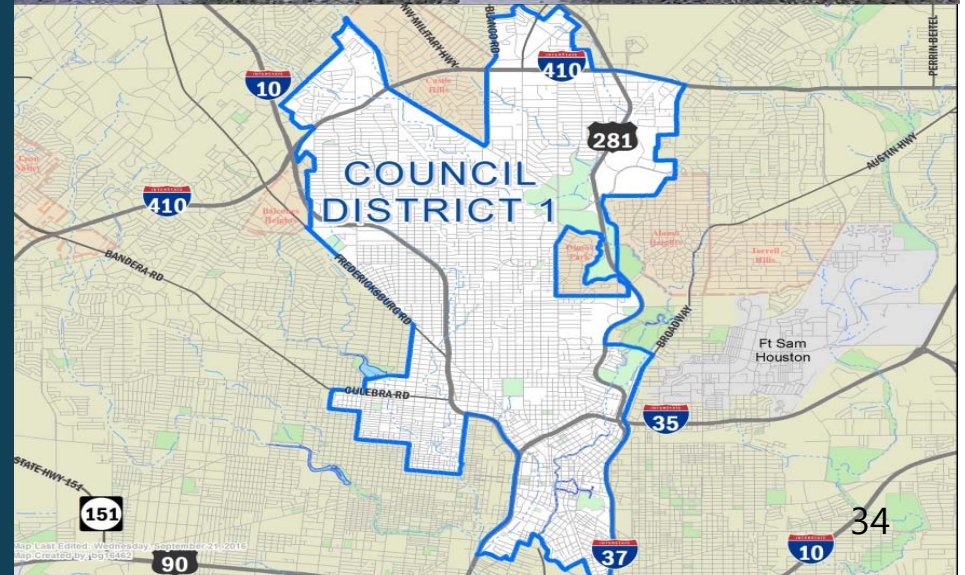
## Pedestrian Mobility

### \$10 Million

Pedestrian safety improvements to include sidewalks.

#### APPLIED GUIDING PRINCIPLES & SA TOMORROW CATEGORIES:

- 1, 2, 3, 5, 6, 7, 8 & 10





# Flores/Fredericksburg (Five Points) Intersection

## \$3 Million

Reconstruct and reconfigure Five Points intersection to improve pedestrian amenities and complement this transit oriented corridor. This will leverage funding with VIA.

### APPLIED GUIDING PRINCIPLES & SA TOMORROW CATEGORIES:

- 1, 2, 3, 4, 6, 7, 8, 9 & 10



TRANSPORTATION  
& CONNECTIVITY



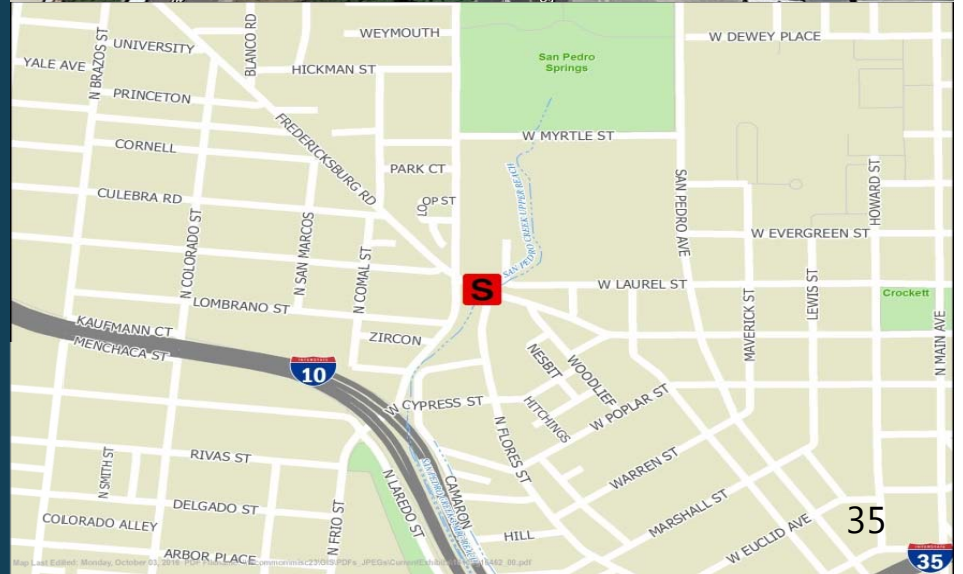
PUBLIC FACILITIES  
& COMMUNITY SAFETY



COMMUNITY HEALTH  
& WELLNESS



STRATEGIC  
DEVELOPMENT

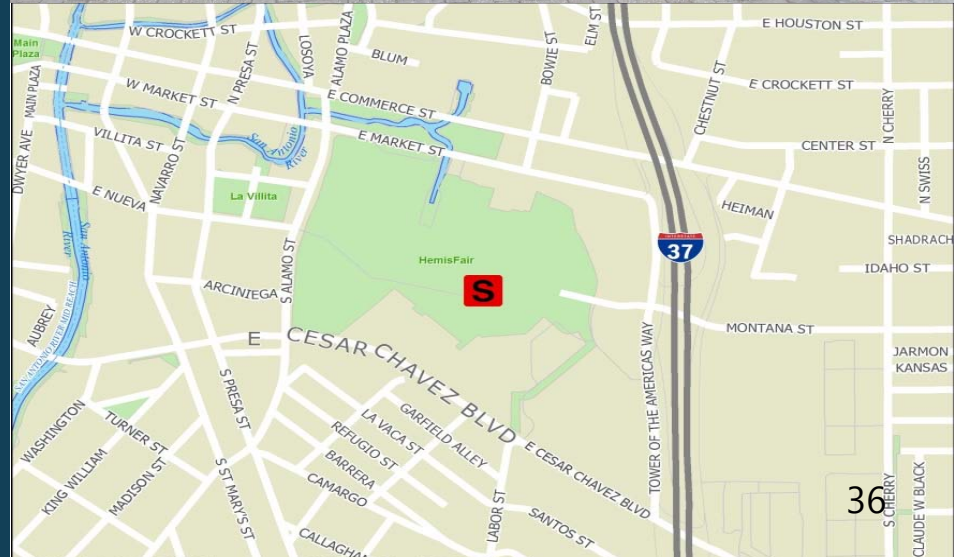


# Hemisfair Internal Streets Phase 2 \$5 Million

Reconstruct Hemisfair internal streets to include Hemisfair Boulevard. This a continuation of 2012 Bond projects.

## APPLIED GUIDING PRINCIPLES & SA TOMMORROW CATEGORIES:

- 1, 2, 3, 5, 7, 8, 9 & 10





# Main and Soledad (Pecan to Navarro)

## \$12 Million

Reconstruct Main and Soledad to include pedestrian amenities and streetscape improvements. Bike amenities will be added on Main. This is a continuation of the 2012 bond program project.

### APPLIED GUIDING PRINCIPLES & SA TOMMORROW CATEGORIES:

- 1, 2, 3, 5, 6, 7, 8, 9 & 10



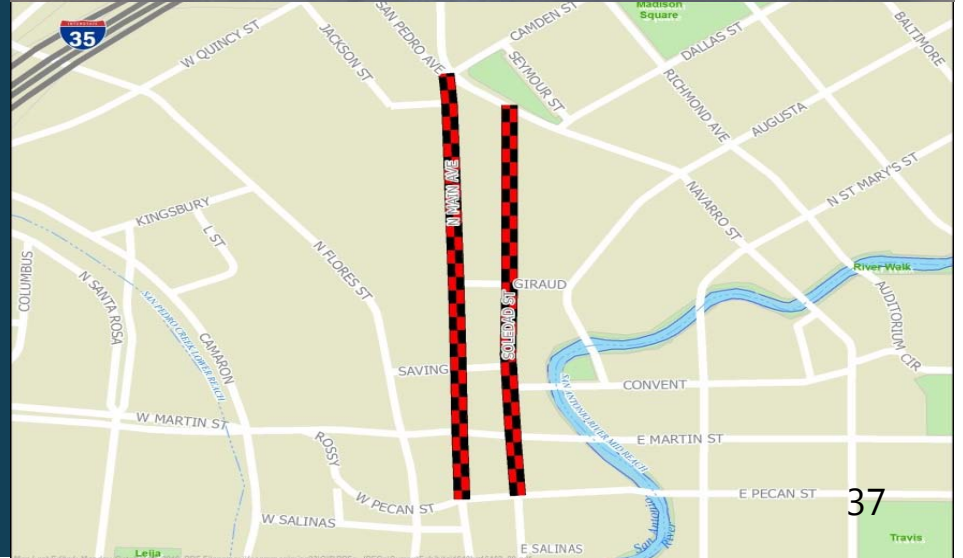
TRANSPORTATION  
& CONNECTIVITY



PUBLIC FACILITIES  
& COMMUNITY SAFETY



COMMUNITY HEALTH  
& WELLNESS



# San Saba (Dolorosa to West Martin) \$7 Million

Roadway improvements on San Saba to include addition of pedestrian amenities and streetscape improvements.

## APPLIED GUIDING PRINCIPLES & SA TOMMORROW CATEGORIES:

- 1, 2, 3, 7, 8 & 10



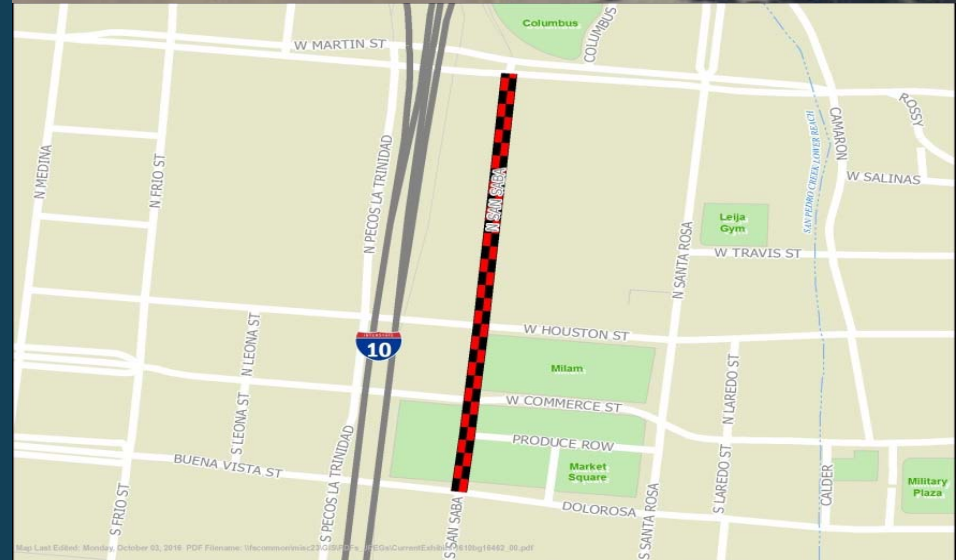
TRANSPORTATION  
& CONNECTIVITY



PUBLIC FACILITIES  
& COMMUNITY SAFETY



COMMUNITY HEALTH  
& WELLNESS

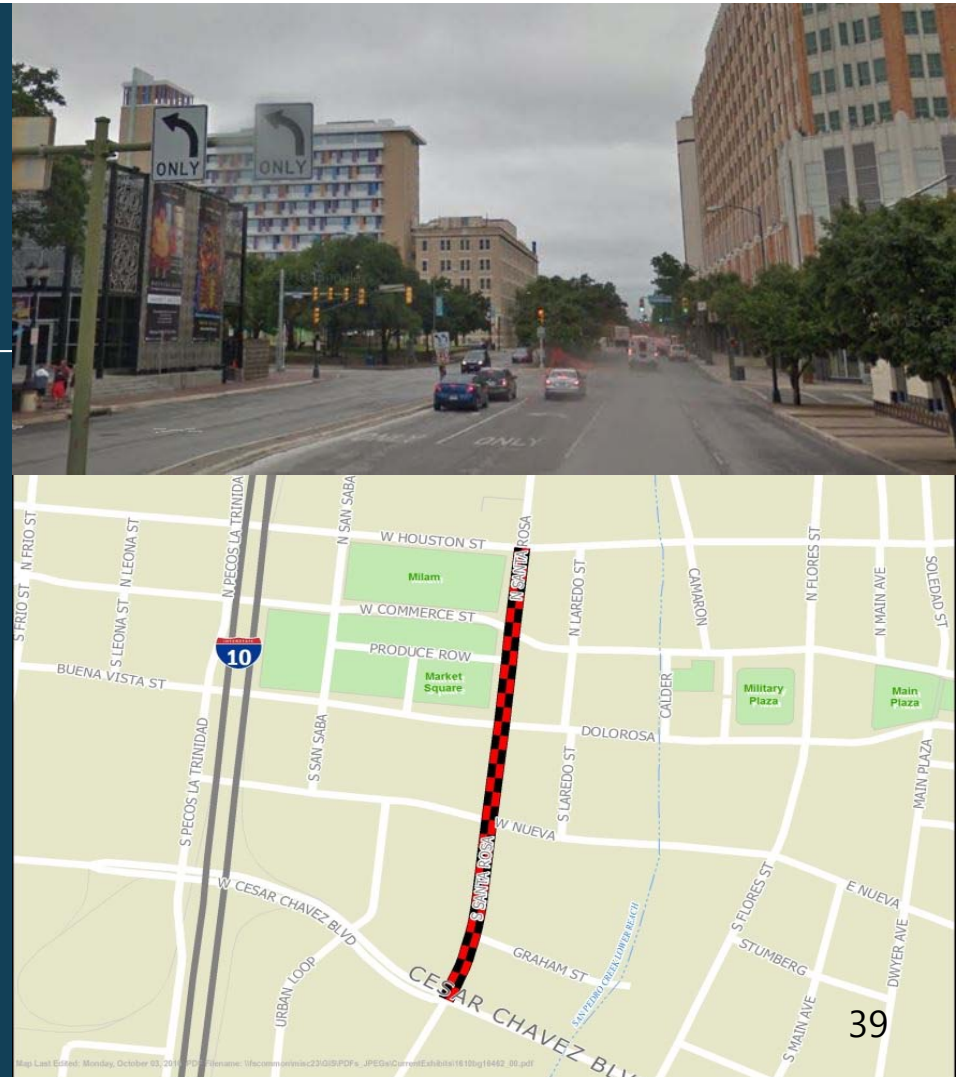


# Santa Rosa (Cesar Chavez to Houston) \$14 Million

Reconstruct Santa Rosa to include addition of pedestrian amenities and streetscape improvements.

## APPLIED GUIDING PRINCIPLES & SA TOMORROW CATEGORIES:

- 1, 2, 3, 7, 8 & 10



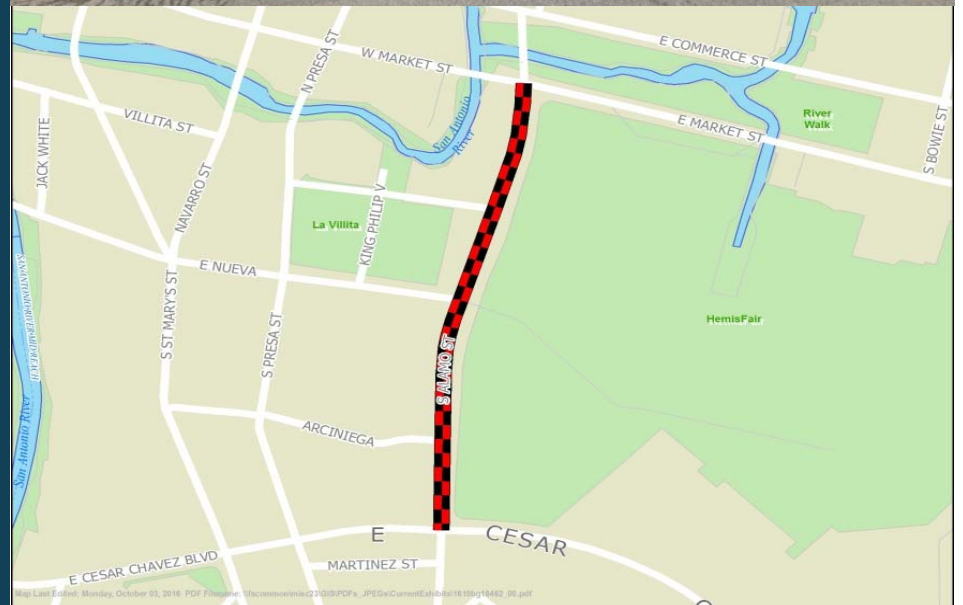
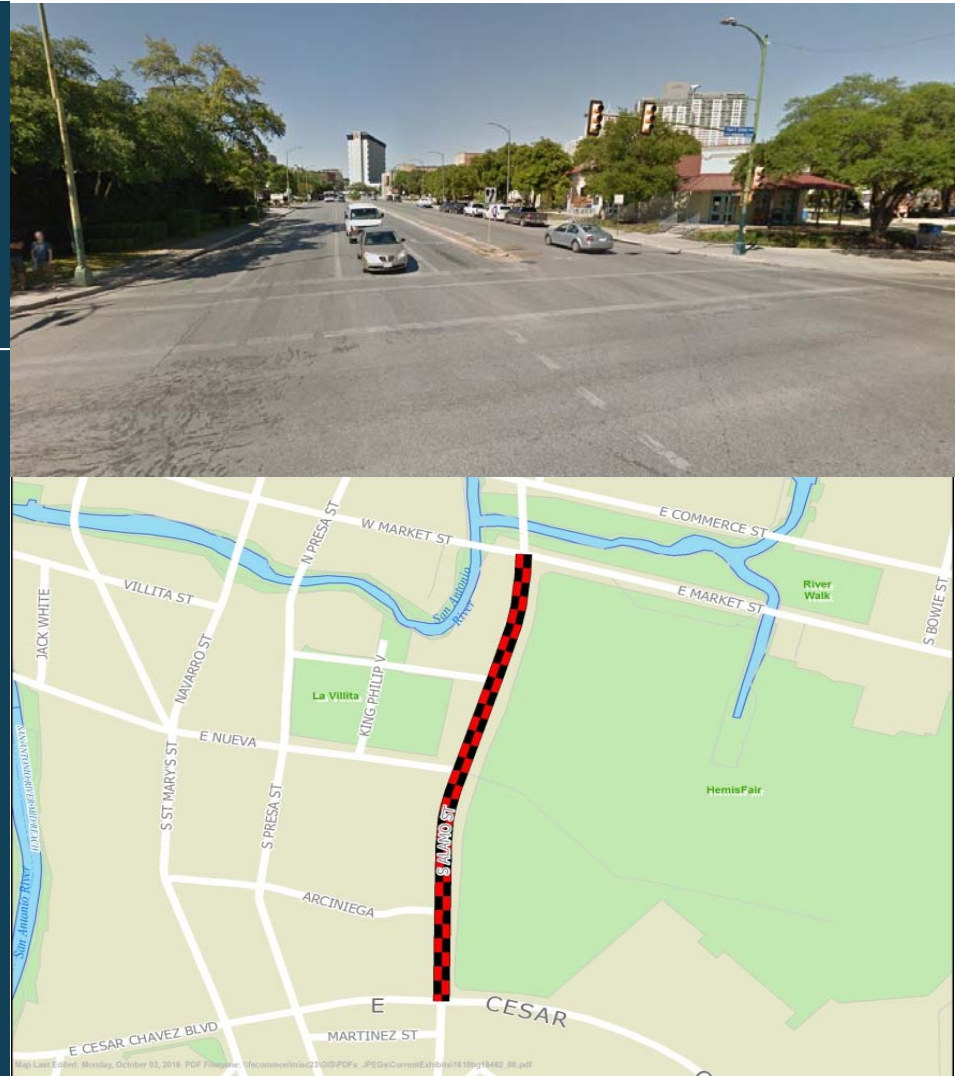


# South Alamo (Market to Cesar Chavez) \$9 Million

Reconstruct roadway to include pedestrian amenities and streetscape improvements.

## APPLIED GUIDING PRINCIPLES & SA TOMORROW CATEGORIES:

- 1, 2, 3, 6, 7, 8 & 10





# St. Mary's St. Improvements (Mistletoe to Josephine)

**\$7 Million**

Complete street improvements including sidewalk connectivity, intersection improvements, and signal enhancements to improve pedestrian and vehicular circulation on St. Mary's from Mistletoe to Josephine.

## APPLIED GUIDING PRINCIPLES & SA TOMORROW CATEGORIES:

- 1, 2, 3, 6, 7, 8 & 10



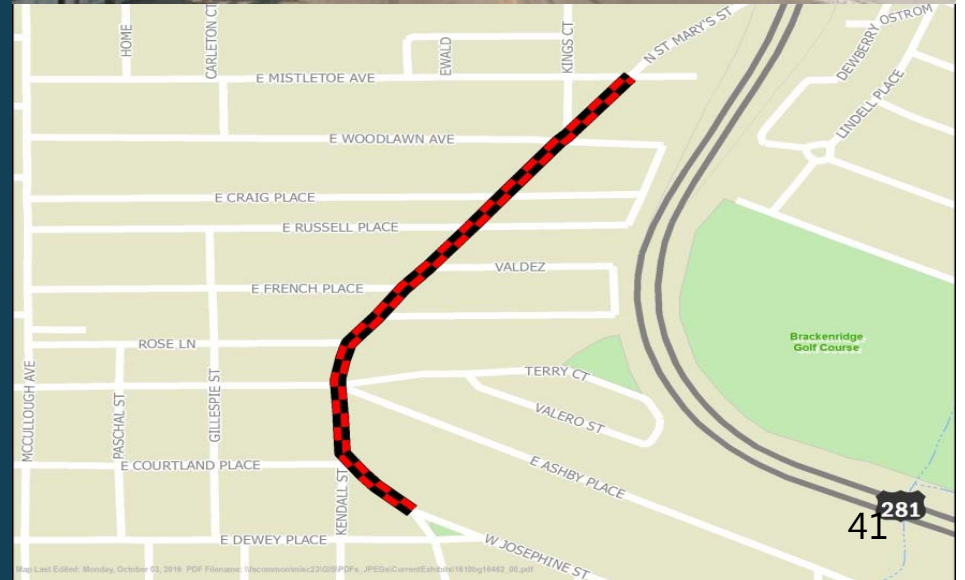
TRANSPORTATION  
& CONNECTIVITY



PUBLIC FACILITIES  
& COMMUNITY SAFETY



COMMUNITY HEALTH  
& WELLNESS



# District 2

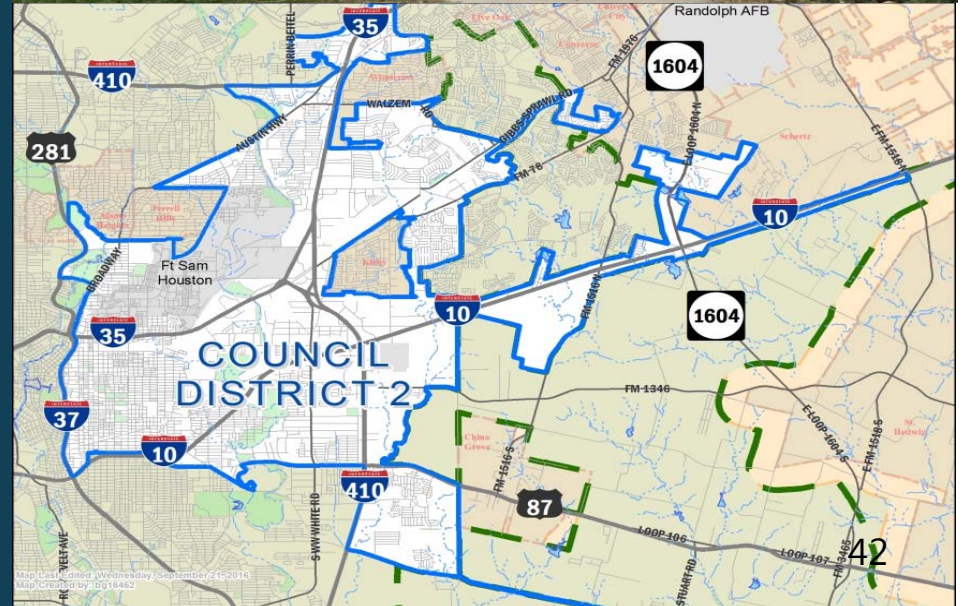
## Pedestrian Mobility

### \$6 Million

Pedestrian safety improvements to include sidewalks.

## APPLIED GUIDING PRINCIPLES & SA TOMORROW CATEGORIES:

- 1, 2, 3, 5, 6, 7, 8 & 10



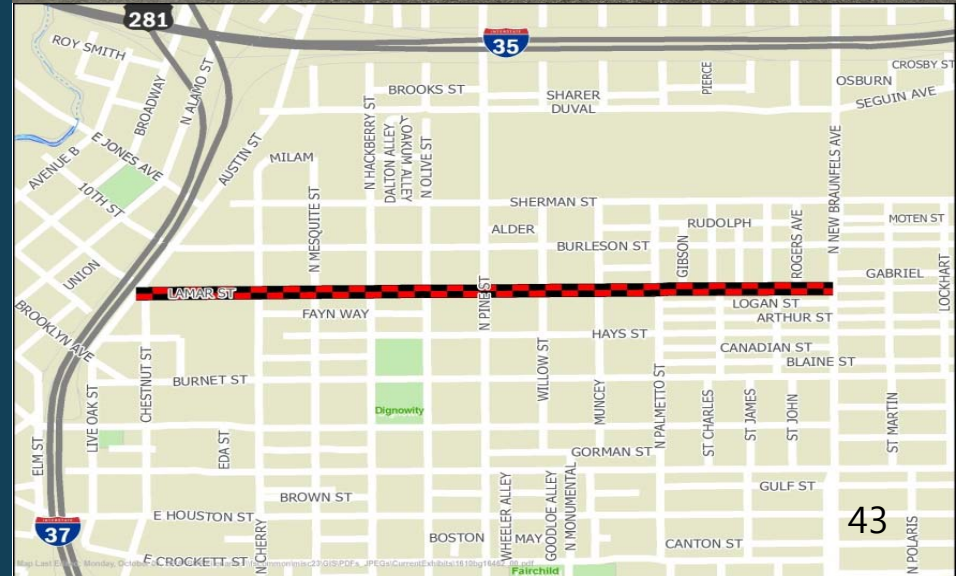


# Lamar (Austin to New Braunfels) \$2.5 Million

Street, curb and sidewalk improvements on Lamar Street. This project provides supplemental funding to existing street project.

## APPLIED GUIDING PRINCIPLES & SA TOMORROW CATEGORIES:

- 1, 2, 5, 7, 8 & 10



# New Braunfels Phase 1 (Houston to Burleson)

**\$9 Million**

Improve the corridor with new sidewalks and other amenities.

## APPLIED GUIDING PRINCIPLES & SA TOMORROW CATEGORIES:

- 1, 2, 6, 7, 8 & 10



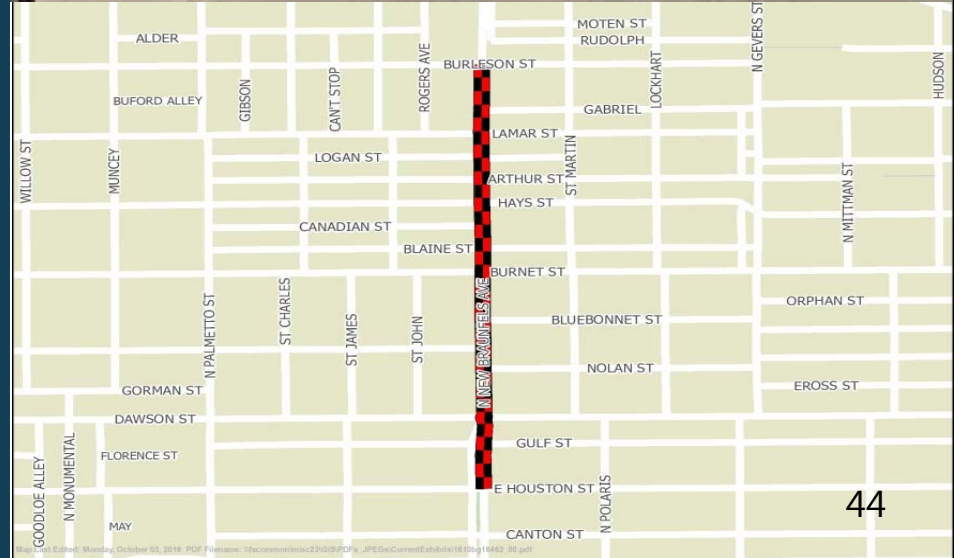
TRANSPORTATION  
& CONNECTIVITY



PUBLIC FACILITIES  
& COMMUNITY SAFETY



COMMUNITY HEALTH  
& WELLNESS



# Rittiman/Gibbs Sprawl Overpass

## \$6 Million

Construct overpass and improved intersection with UPRR tracks. Funding is City contribution to partnership with Union Pacific Railroad and TxDOT.

### APPLIED GUIDING PRINCIPLES & SA TOMORROW CATEGORIES:

- 1, 2, 3, 4, 6, 7, 8, 9 & 10



TRANSPORTATION  
& CONNECTIVITY



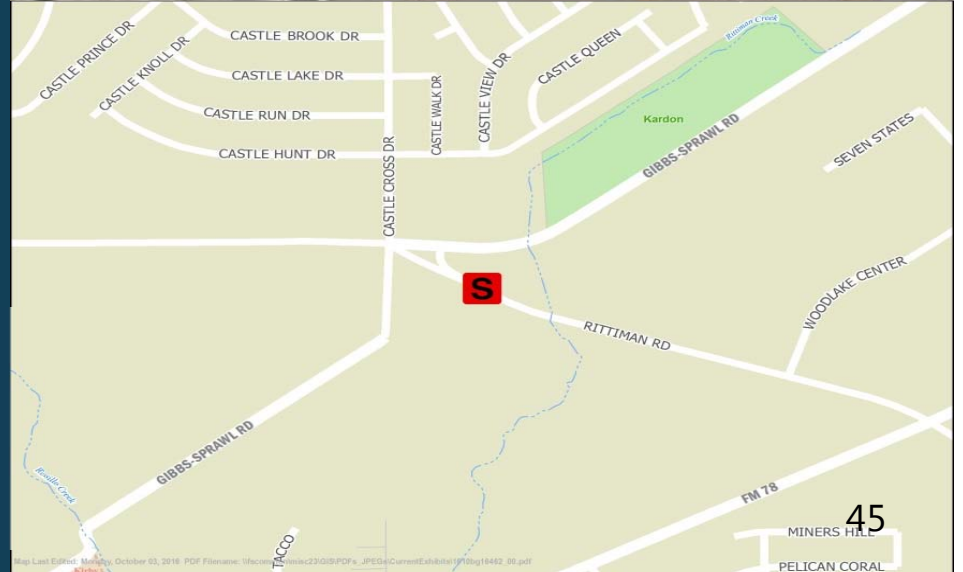
PUBLIC FACILITIES  
& COMMUNITY SAFETY



COMMUNITY HEALTH  
& WELLNESS



STRATEGIC  
DEVELOPMENT





# Applewhite Intersection Improvement (South of Watson Road)

**\$1 Million**

Widen and reconstruct intersection and make traffic signal modifications as needed.

## APPLIED GUIDING PRINCIPLES & SA TOMORROW CATEGORIES:

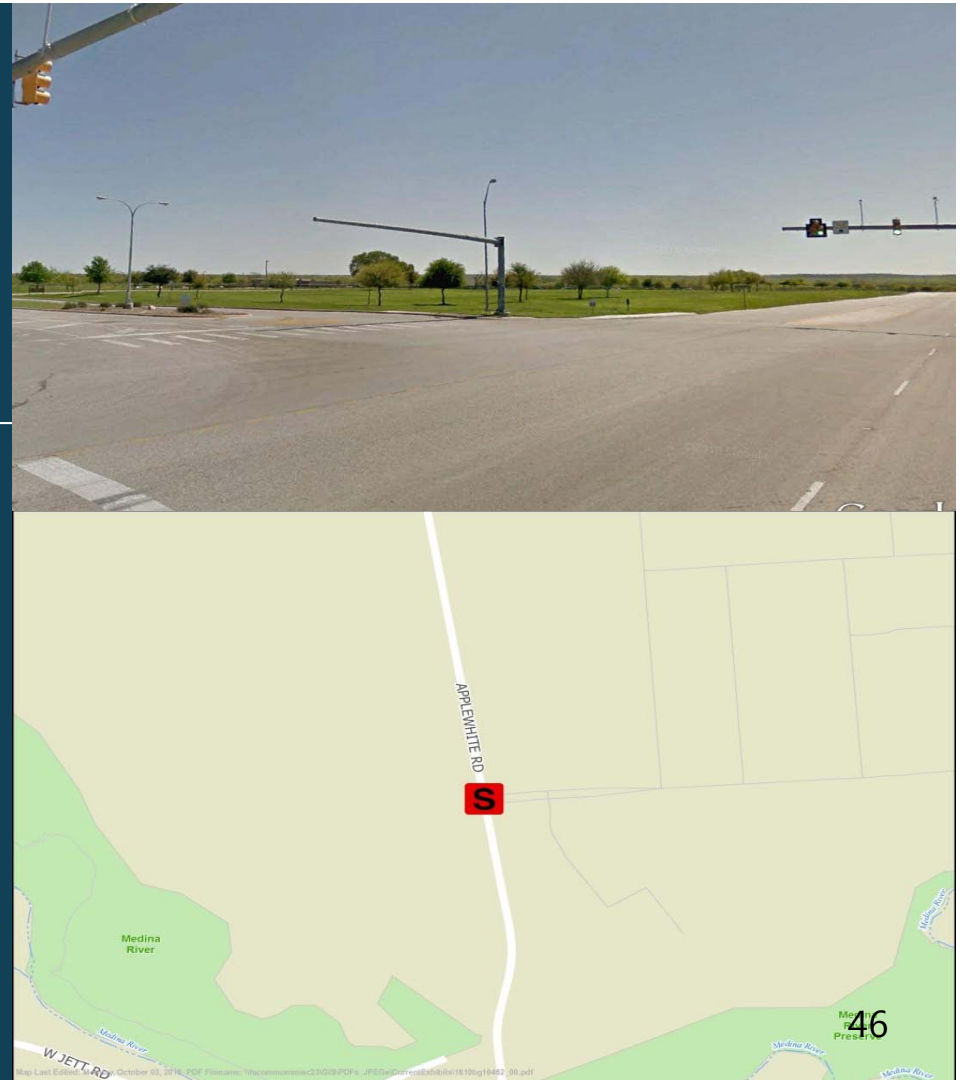
- 1, 2, 6 & 10



TRANSPORTATION  
& CONNECTIVITY



STRATEGIC  
DEVELOPMENT



# Brooks City Base (Research Plaza to South Presa) "Stinson Corridor"

## \$10 Million

Construct new alignment of Research Plaza to South Presa Street.

### APPLIED GUIDING PRINCIPLES & SA TOMORROW CATEGORIES:

- 1, 2, 3, 4, 7, 8, 9 & 10



TRANSPORTATION  
& CONNECTIVITY



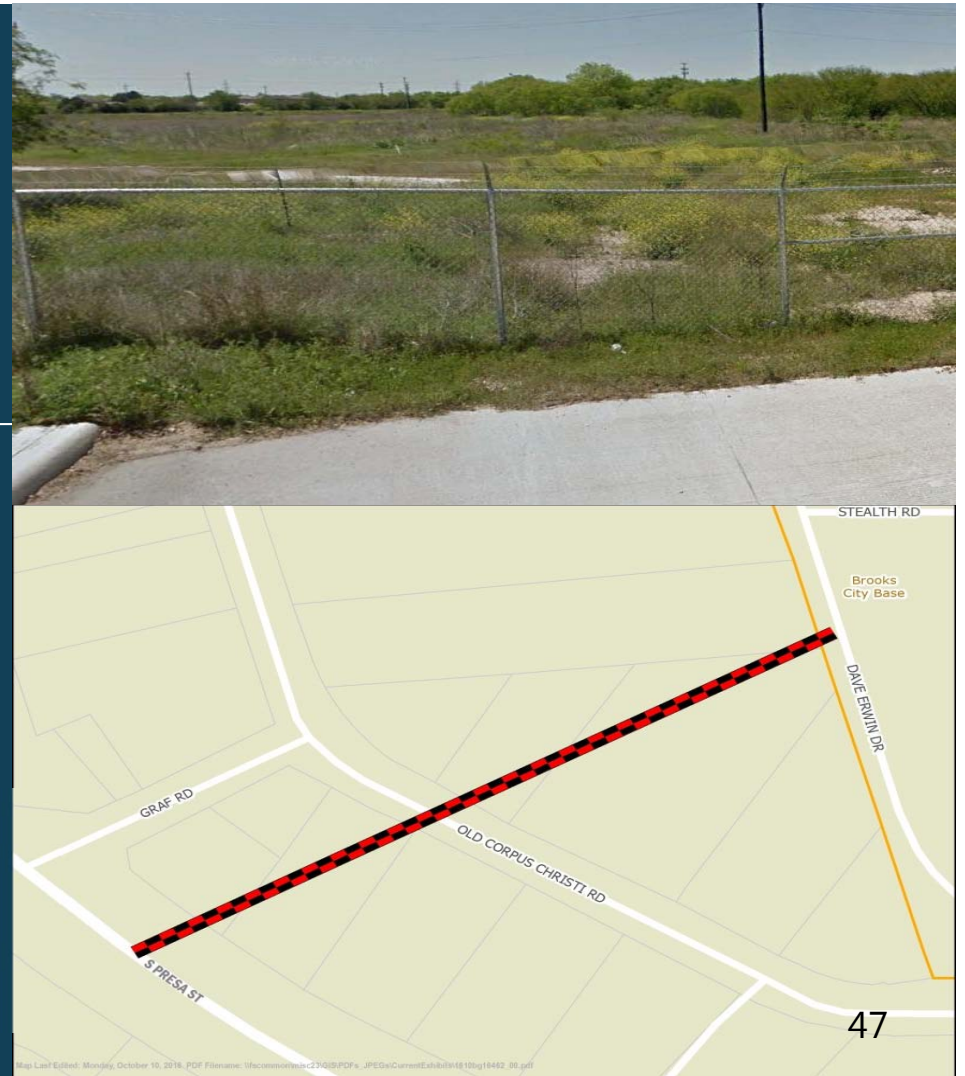
PUBLIC FACILITIES  
& COMMUNITY SAFETY



COMMUNITY HEALTH  
& WELLNESS



STRATEGIC  
DEVELOPMENT



# Brooks City Base (S. New Braunfels to Lyster Road to Aviation Landing)

## \$10.4 Million

Extend the South New Braunfels Road within Brooks City Base to proposed intersection with Lyster Road, continuing to intersection of Aviation Landing.

### APPLIED GUIDING PRINCIPLES & SA TOMORROW CATEGORIES:

- 1, 2, 3, 4, 7, 8, 9 & 10



TRANSPORTATION  
& CONNECTIVITY



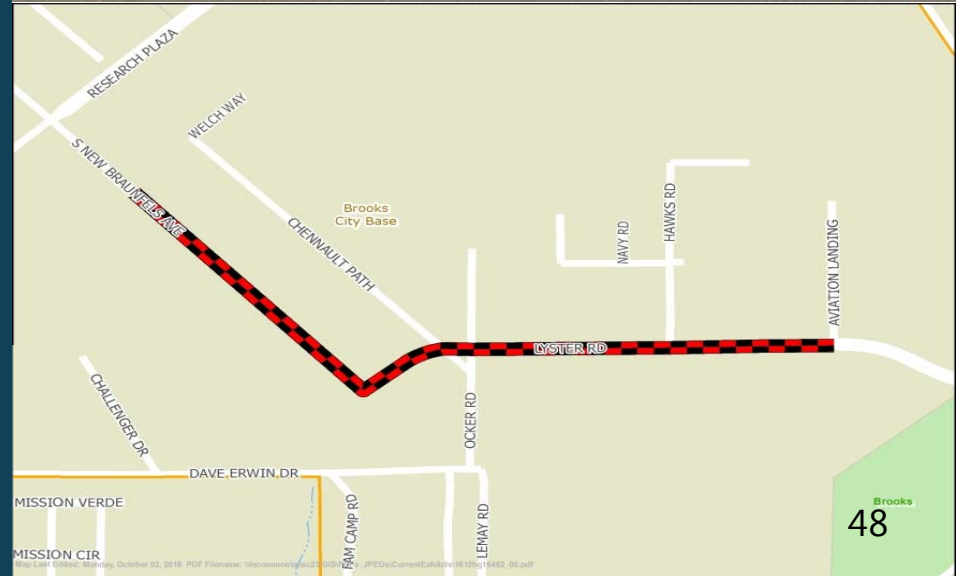
PUBLIC FACILITIES  
& COMMUNITY SAFETY



COMMUNITY HEALTH  
& WELLNESS



STRATEGIC  
DEVELOPMENT





# Brooks City Base Inner Circle (Louis Bauer to Research Plaza)

**\$3 Million**

Extend and improve Inner Circle from Louis Bauer to Research Plaza.

## APPLIED GUIDING PRINCIPLES & SA TOMORROW CATEGORIES:

- 1, 2, 3, 4, 7, 8, 9 & 10



TRANSPORTATION  
& CONNECTIVITY



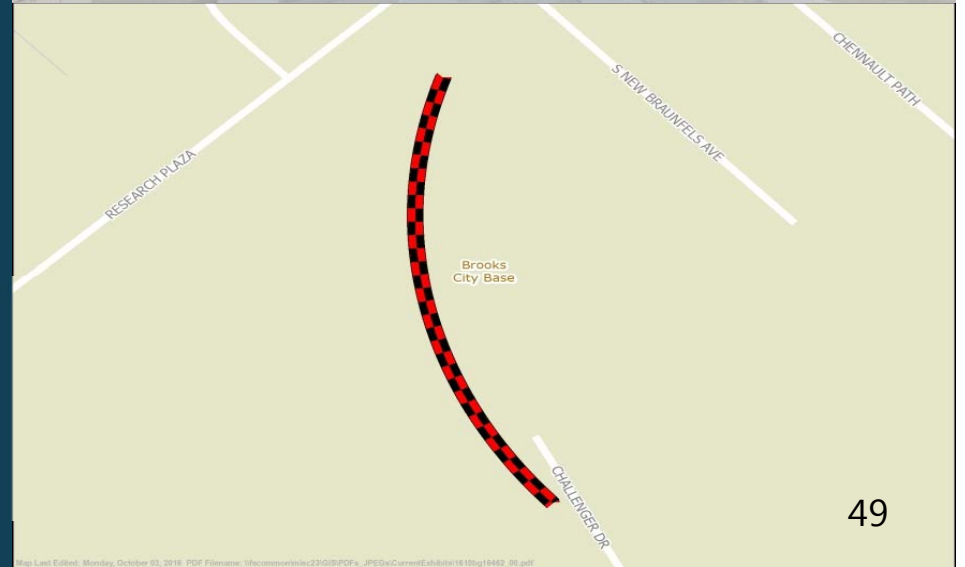
PUBLIC FACILITIES  
& COMMUNITY SAFETY



COMMUNITY HEALTH  
& WELLNESS



STRATEGIC  
DEVELOPMENT



# District 3 Pedestrian Mobility \$9 Million

Pedestrian safety improvements to include sidewalks.

## APPLIED GUIDING PRINCIPLES & SA TOMORROW CATEGORIES:

- 1, 2, 3, 5, 6, 7, 8 & 10



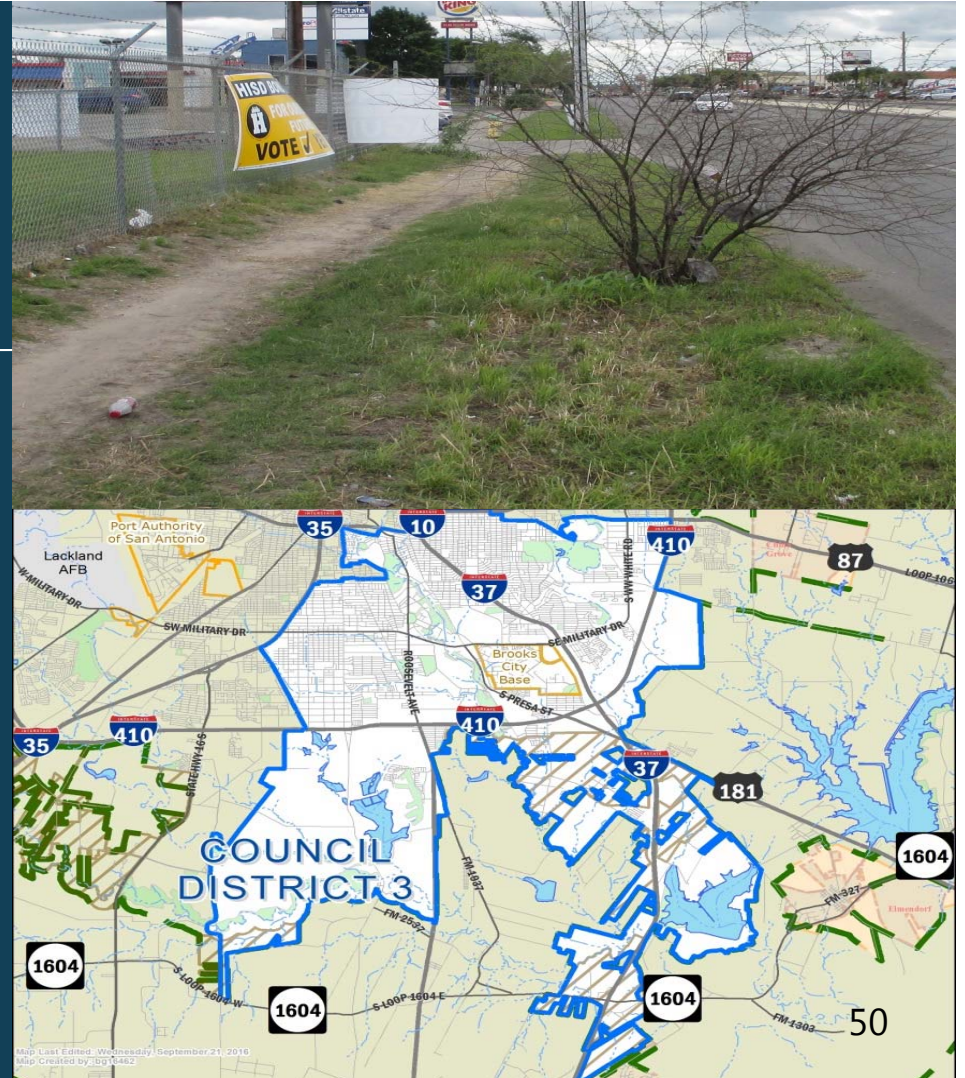
TRANSPORTATION  
& CONNECTIVITY



PUBLIC FACILITIES  
& COMMUNITY SAFETY



COMMUNITY HEALTH  
& WELLNESS



# Goliad Road (Fair Avenue to East Southcross)

**\$12.9 Million**

Reconstruct roadway with curbs, sidewalks, driveway approaches, drainage and other improvements as needed.

## APPLIED GUIDING PRINCIPLES & SA TOMORROW CATEGORIES:

- 1, 2, 6, 7, 8 & 10



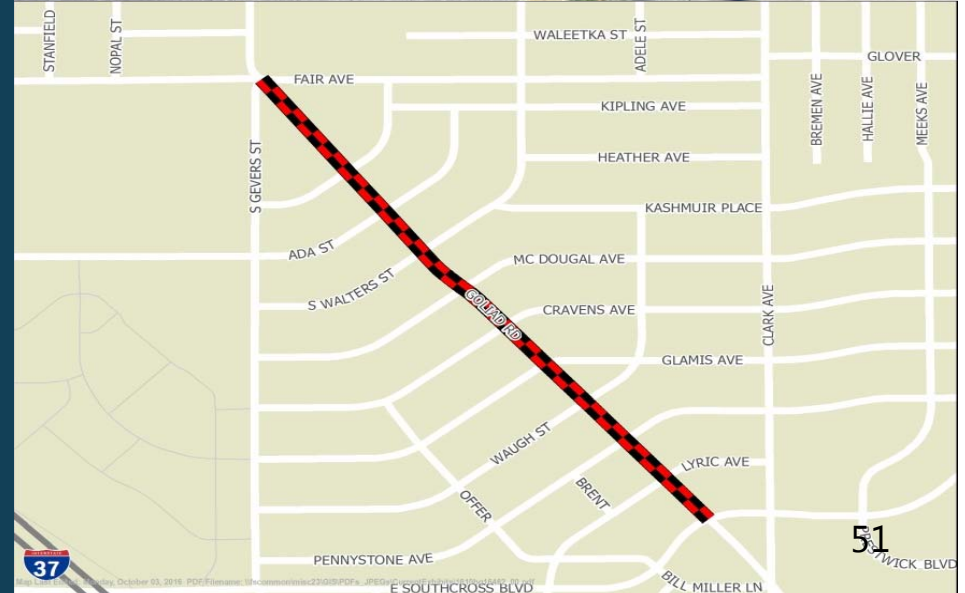
TRANSPORTATION  
& CONNECTIVITY



PUBLIC FACILITIES  
& COMMUNITY SAFETY



COMMUNITY HEALTH  
& WELLNESS





# Mission Road (San Antonio River to SE Military Drive) (World Heritage) \$2 Million

Mission Road streetscape improvements as needed. Improvements to potentially include but not limited to: lighting, paver bands and trail design enhancements.

## APPLIED GUIDING PRINCIPLES & SA TOMORROW CATEGORIES:

- 1, 2, 5, 6, 7, 8 & 10



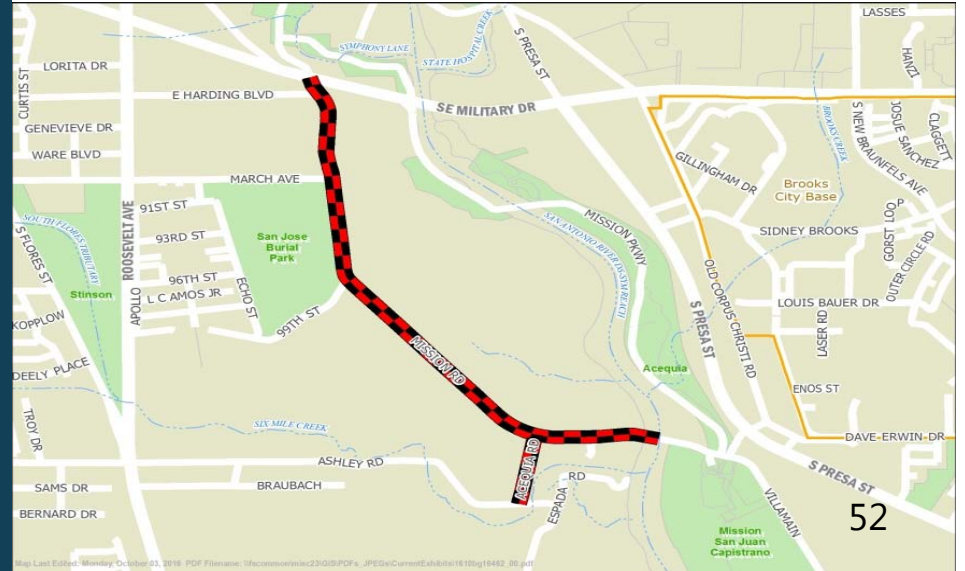
TRANSPORTATION  
& CONNECTIVITY



PUBLIC FACILITIES  
& COMMUNITY SAFETY



COMMUNITY HEALTH  
& WELLNESS



# Roosevelt Avenue (Hwy 90 to Loop 410)(World Heritage)

## \$8 Million

Corridor improvements to include but not limited to pedestrian amenities and enhancements from Hwy 90 to Mission San Jose (north of Military Drive).

### APPLIED GUIDING PRINCIPLES & SA TOMORROW CATEGORIES:

- 1, 2, 3, 4, 6, 7, 8 & 10



TRANSPORTATION  
& CONNECTIVITY



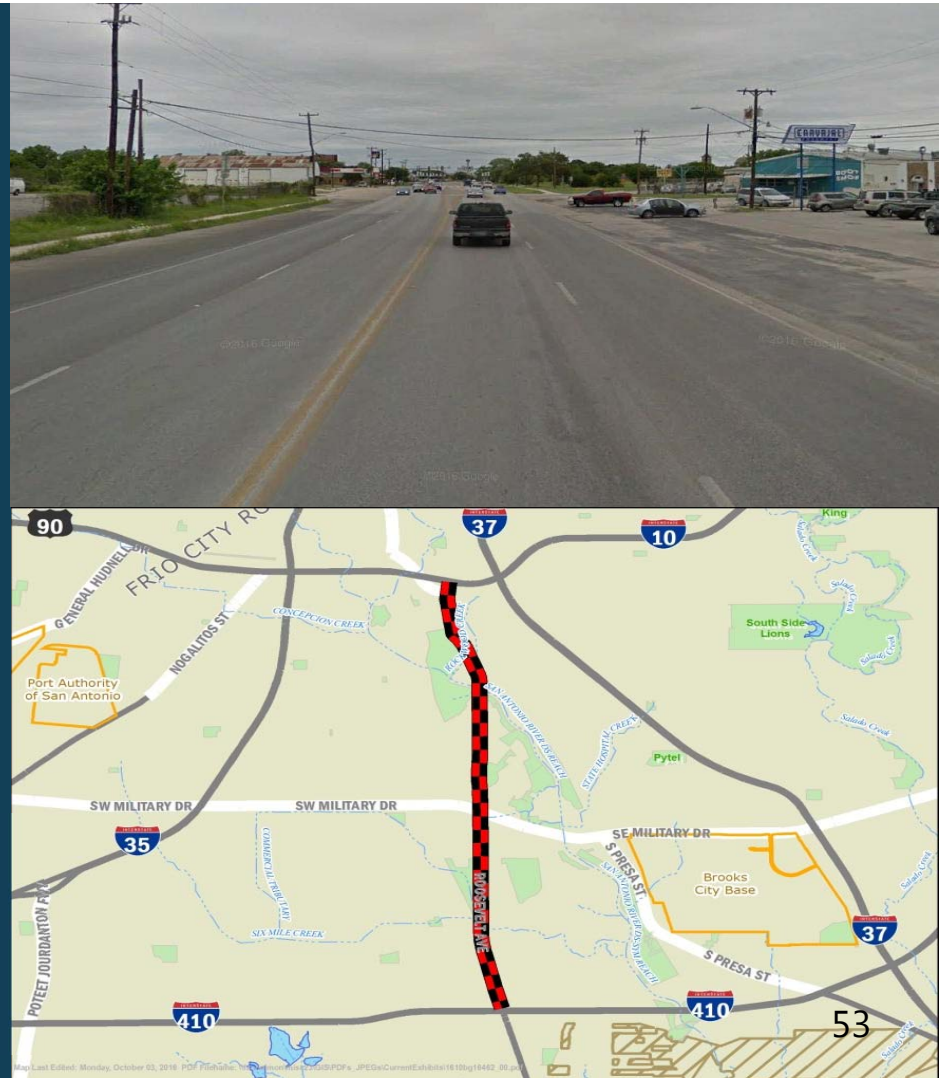
PUBLIC FACILITIES  
& COMMUNITY SAFETY



COMMUNITY HEALTH  
& WELLNESS



STRATEGIC  
DEVELOPMENT





# South Presa (S.E. Military to Southcross) (World Heritage) \$5 Million

Corridor improvements in support of World Heritage initiatives.

## APPLIED GUIDING PRINCIPLES & SA TOMORROW CATEGORIES:

- 1, 2, 3, 6, 7, 8, 10



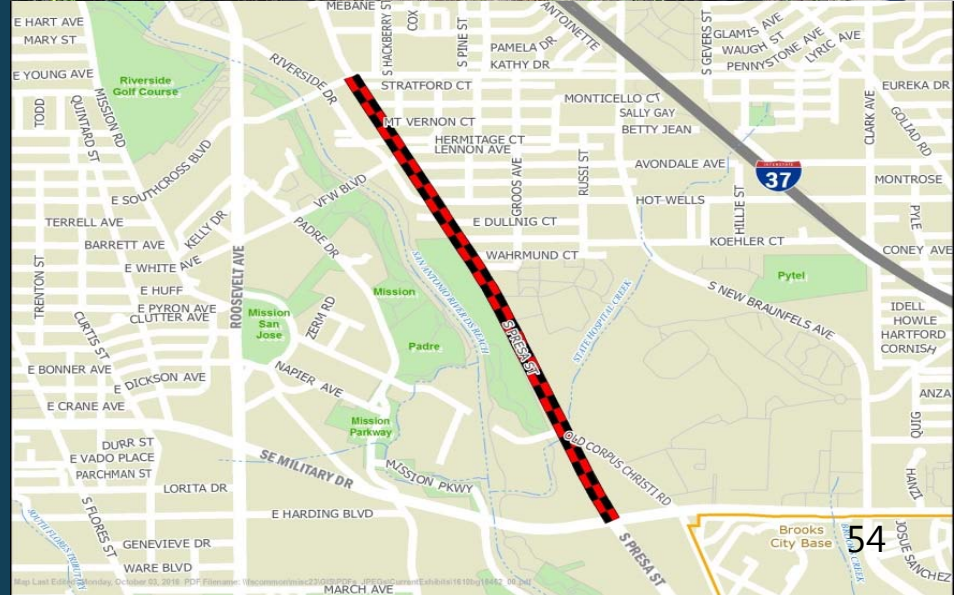
TRANSPORTATION  
& CONNECTIVITY



PUBLIC FACILITIES  
& COMMUNITY SAFETY



COMMUNITY HEALTH  
& WELLNESS



# Southcross (IH37 to IH35)

## \$5 Million

Corridor improvements to include but not limited to pedestrian amenities and enhancements in support of World Heritage initiatives.

### APPLIED GUIDING PRINCIPLES & SA TOMORROW CATEGORIES:

- 1, 2, 3, 6, 7, 8 & 10



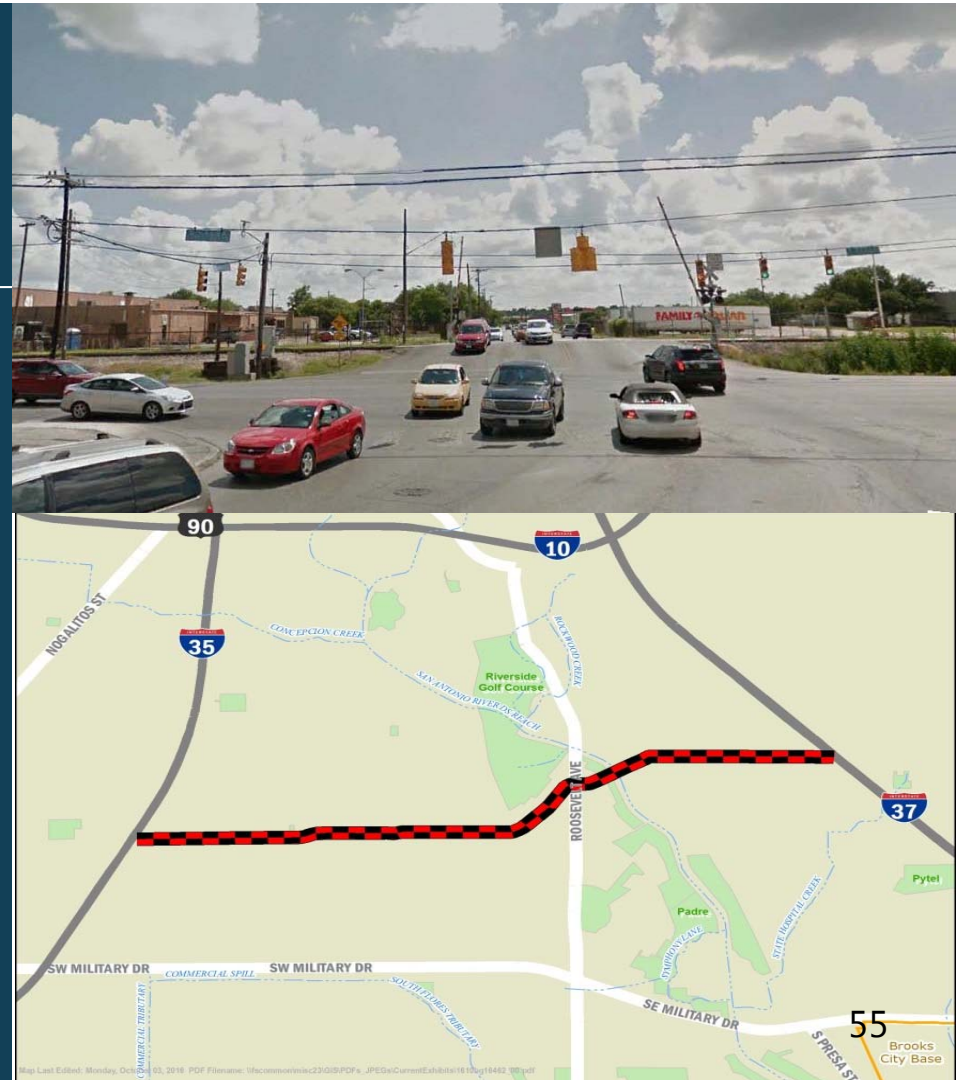
TRANSPORTATION  
& CONNECTIVITY



PUBLIC FACILITIES  
& COMMUNITY SAFETY



COMMUNITY HEALTH  
& WELLNESS





# World Heritage Trail Signage & Wayfinding \$5 Million

Trail signage and wayfinding improvements in support of World Heritage designation.

## APPLIED GUIDING PRINCIPLES & SA TOMORROW CATEGORIES:

- 1, 2, 3, 5, & 6





# Bynum Road (W. Gerald to SW Military)

**\$7.73 Million**

Street and drainage improvements on Bynum Road between W. Gerald to SW Military Drive. Curbs, sidewalks and driveway approaches will be built or reconstructed as needed.

## APPLIED GUIDING PRINCIPLES & SA TOMORROW CATEGORIES:

- 1, 2, 7, 8 & 10



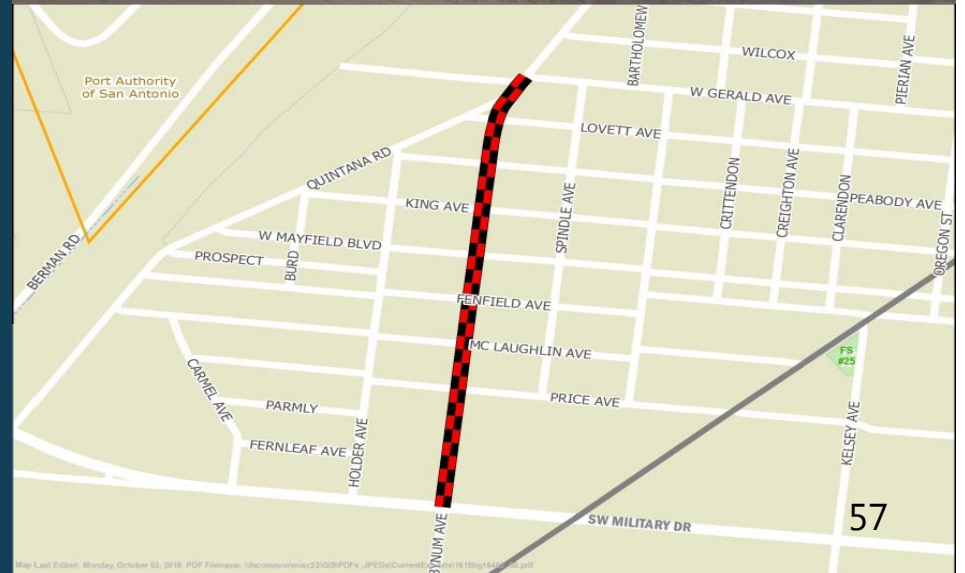
TRANSPORTATION  
& CONNECTIVITY



PUBLIC FACILITIES  
& COMMUNITY SAFETY



COMMUNITY HEALTH  
& WELLNESS



Map Last Edited: Monday October 03, 2016 PDF Filename: \\fcm\com\proj\c23\GIS\PDFs\_JPEG\Current\FS#25\100g\1410001.pdf

# District 4 Pedestrian Mobility \$7 Million

Pedestrian safety improvements to include sidewalks.

## APPLIED GUIDING PRINCIPLES & SA TOMORROW CATEGORIES:

- 1, 2, 3, 5, 6, 7, 8 & 10



# Zarzamora / Applewhite Intersection

**\$900,000**

Reconfigure the Zarzamora / Applewhite Intersection.

## APPLIED GUIDING PRINCIPLES & SA TOMORROW CATEGORIES:

- 1, 2, 3, 6, & 10



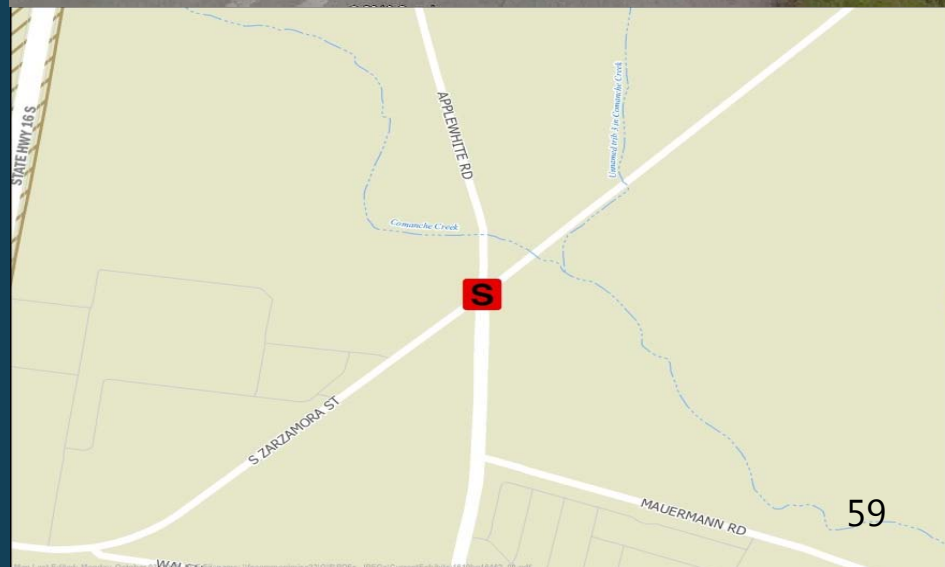
TRANSPORTATION  
& CONNECTIVITY



PUBLIC FACILITIES  
& COMMUNITY SAFETY



COMMUNITY HEALTH  
& WELLNESS





# District 5 Pedestrian Mobility \$10 Million

Pedestrian safety improvements to include sidewalks.

## APPLIED GUIDING PRINCIPLES & SA TOMORROW CATEGORIES:

- 1, 2, 3, 5, 6, 7, 8 & 10



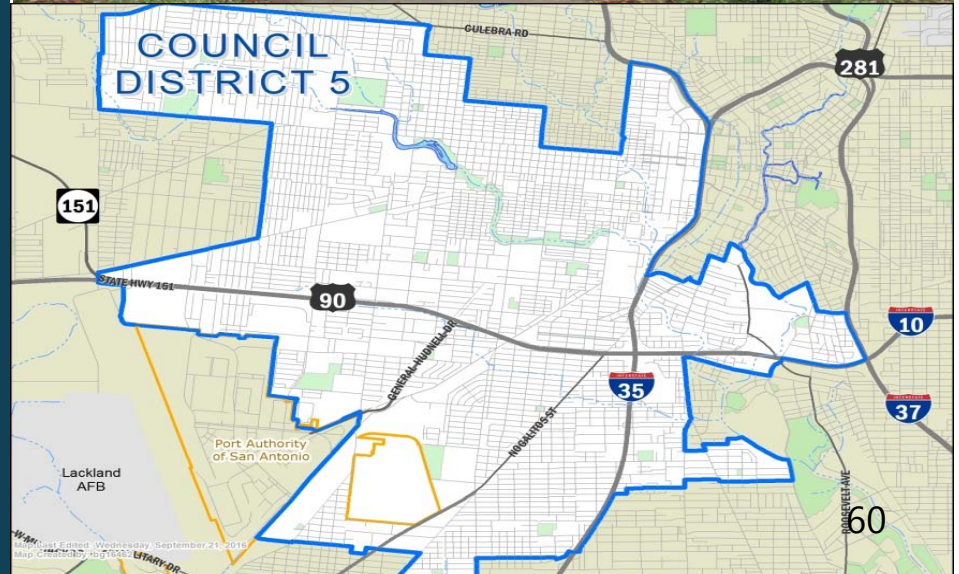
TRANSPORTATION  
& CONNECTIVITY



PUBLIC FACILITIES  
& COMMUNITY SAFETY



COMMUNITY HEALTH  
& WELLNESS



# Lone Star Area Streets

## \$5 Million

Reconstruct and widen Lone Star Blvd and incorporate pedestrian and bicycle amenities in support of the World Heritage initiative. Improve intersections as needed. Leverage project with private development.

### APPLIED GUIDING PRINCIPLES & SA TOMORROW CATEGORIES:

- 1, 2, 3, 4, 7, 8 & 10



TRANSPORTATION  
& CONNECTIVITY



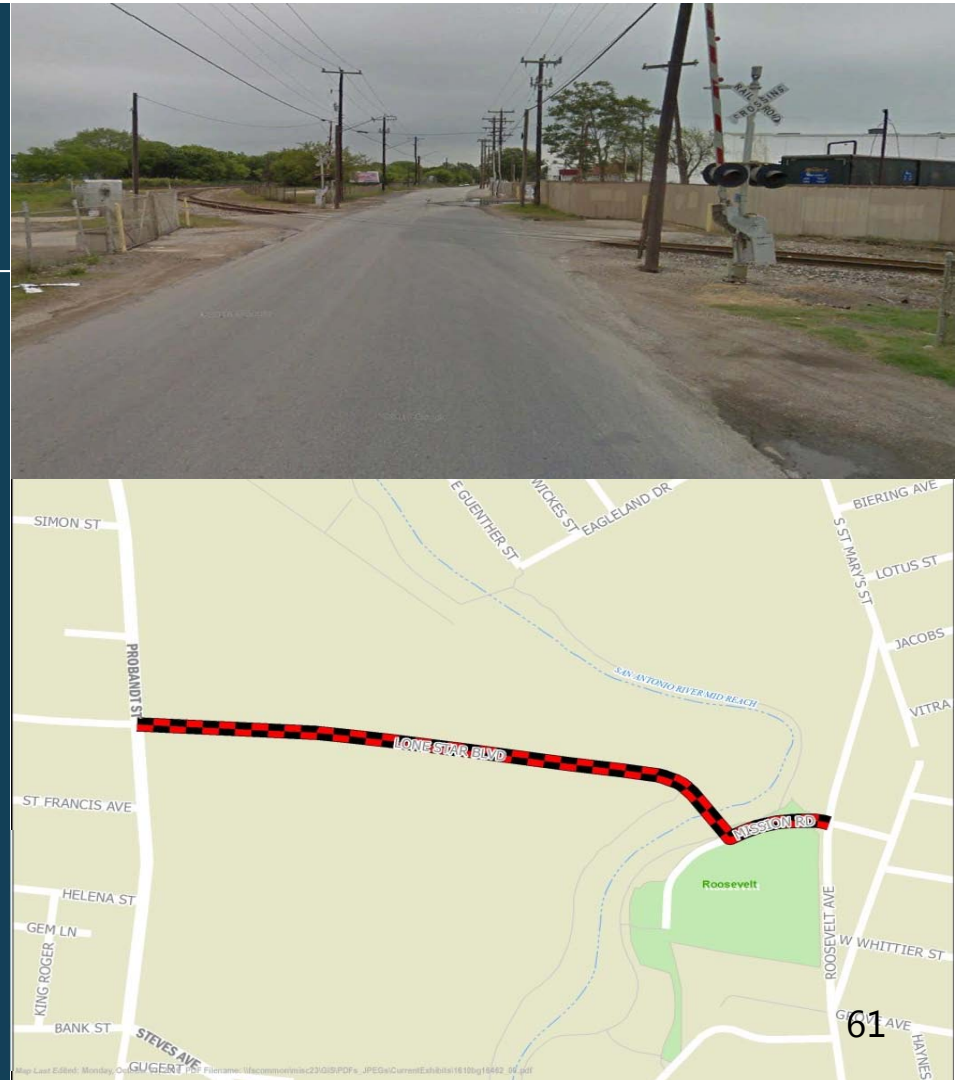
PUBLIC FACILITIES  
& COMMUNITY SAFETY



COMMUNITY HEALTH  
& WELLNESS



STRATEGIC  
DEVELOPMENT





# Probandt (Alamo to Highway 90) \$3 Million

Corridor improvements to include pedestrian amenities, drainage and traffic improvements as needed. This will be leveraged funding with Texas Department of Transportation.

## APPLIED GUIDING PRINCIPLES & SA TOMORROW CATEGORIES:

- 1, 2, 3, 4, 5, 6, 7, 8 & 10



TRANSPORTATION  
& CONNECTIVITY



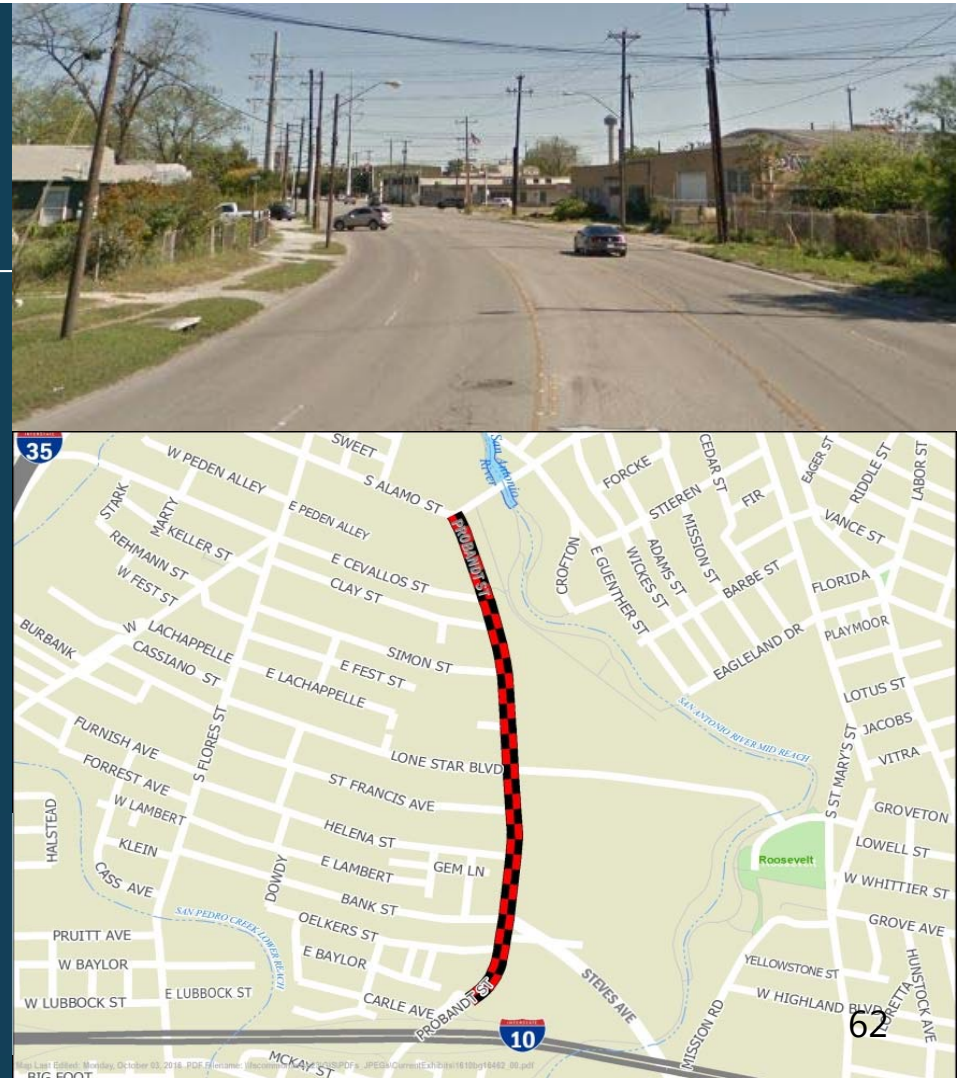
PUBLIC FACILITIES  
& COMMUNITY SAFETY



COMMUNITY HEALTH  
& WELLNESS



STRATEGIC  
DEVELOPMENT

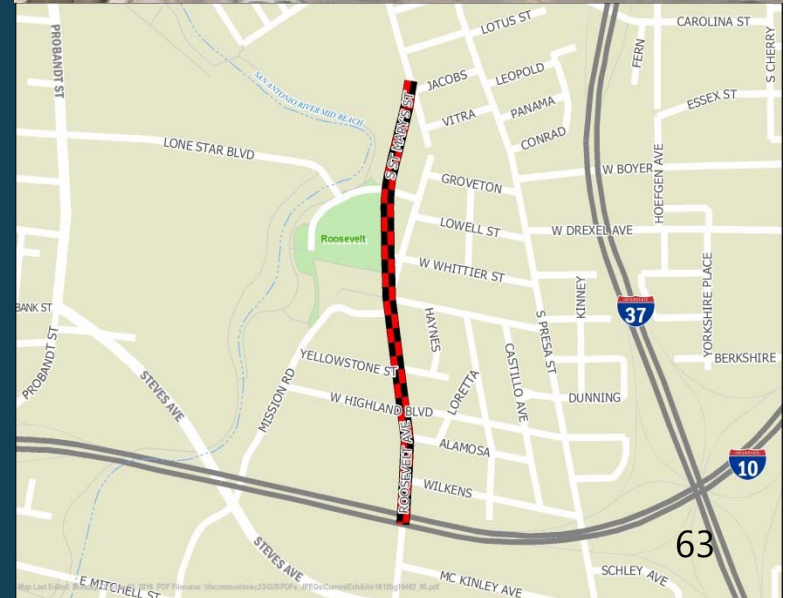


# Roosevelt Corridor Improvements (IH10 to St. Mary's UPRR Crossing) \$7 Million

Street improvements on Roosevelt and St. Mary's to include bicycle facilities, sidewalks and landscaping to improve the corridor. Improve ADA access under the Union Pacific Railroad bridge structure.

## APPLIED GUIDING PRINCIPLES & SA TOMORROW CATEGORIES:

- 1, 2, 3, 6, 7, 8 & 10





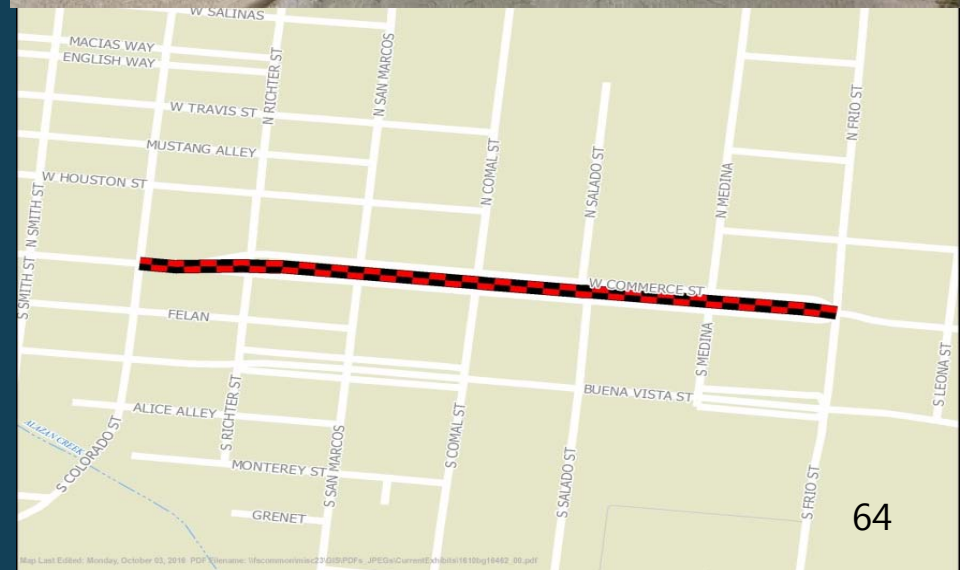
# West Commerce Corridor (Frio to Colorado)

**\$10 Million**

Improvements to West Commerce Corridor as per Master Plan to include but not limited to: reconfiguring of lanes on bridge, wider sidewalks and bike facilities.

## APPLIED GUIDING PRINCIPLES & SA TOMORROW CATEGORIES:

- 1, 2, 3, 5, 6, 7, 8 & 10



# Zarzamora Overpass @ UPRR / Frio Street \$10 Million

Preliminary engineering steps to design and construct overpass over UPRR and Frio Street. This is an Alamo Area Metropolitan Planning Organization leveraged project.

## APPLIED GUIDING PRINCIPLES & SA TOMORROW CATEGORIES:

- 1, 2, 3, 4, 6, 7, 8, 9, & 10



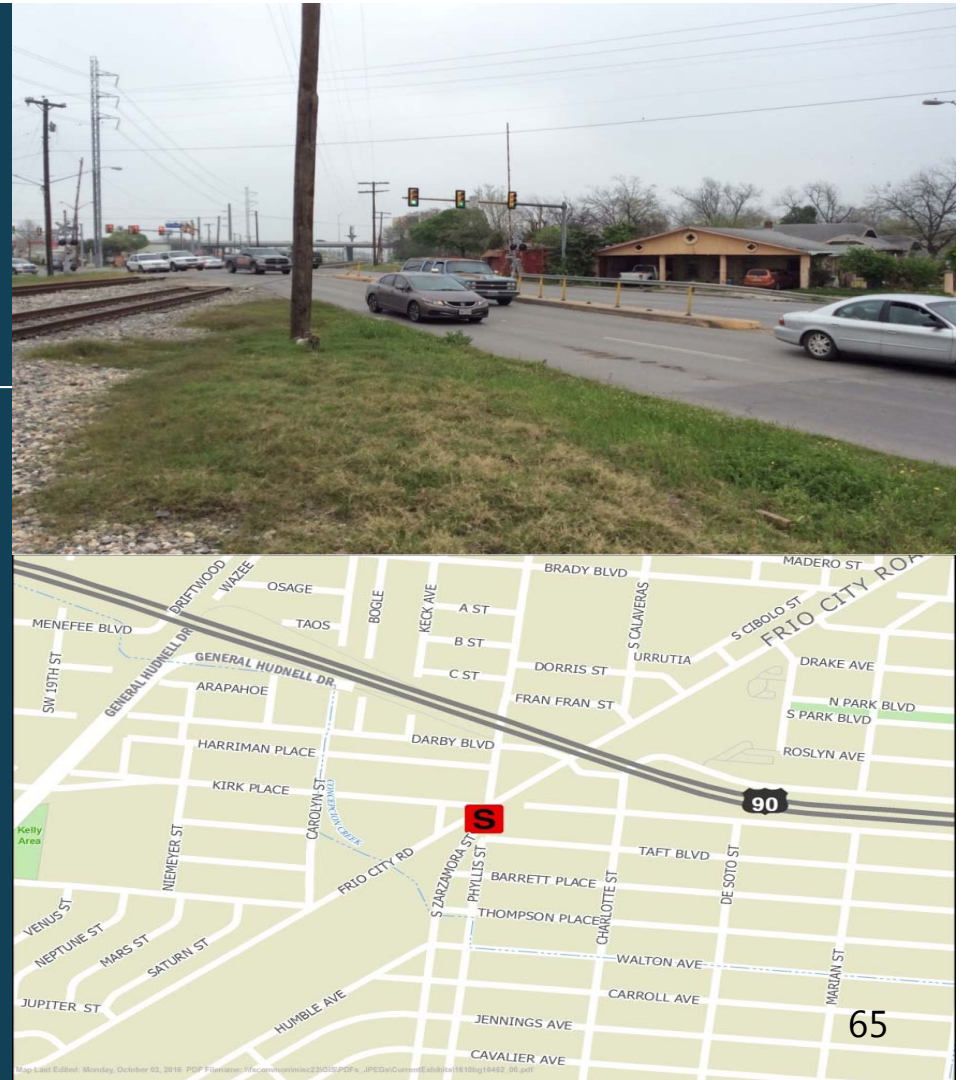
TRANSPORTATION  
& CONNECTIVITY



PUBLIC FACILITIES  
& COMMUNITY SAFETY



COMMUNITY HEALTH  
& WELLNESS





# District 6 Pedestrian Mobility \$5 Million

Pedestrian safety improvements to include sidewalks.

## APPLIED GUIDING PRINCIPLES & SA TOMORROW CATEGORIES:

- 1, 2, 3, 5, 6, 7, 8 & 10



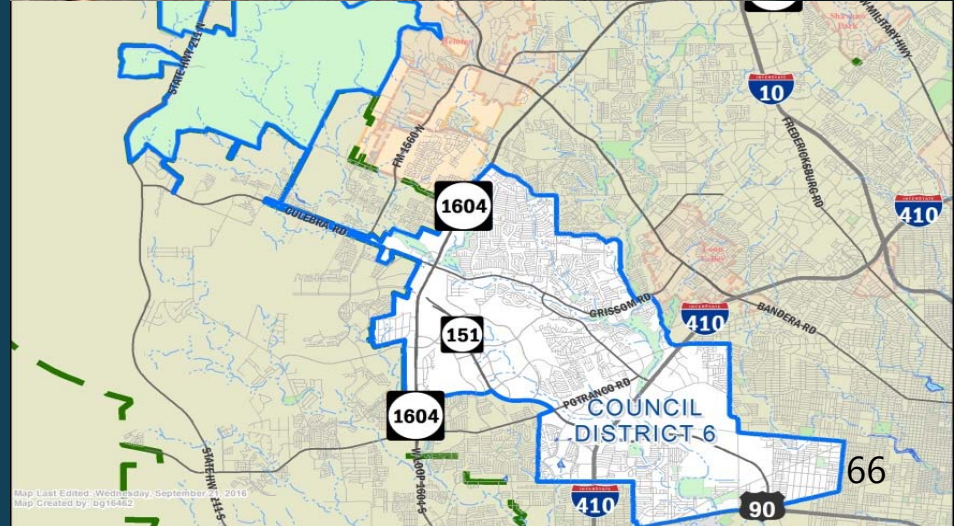
TRANSPORTATION  
& CONNECTIVITY



PUBLIC FACILITIES  
& COMMUNITY SAFETY



COMMUNITY HEALTH  
& WELLNESS



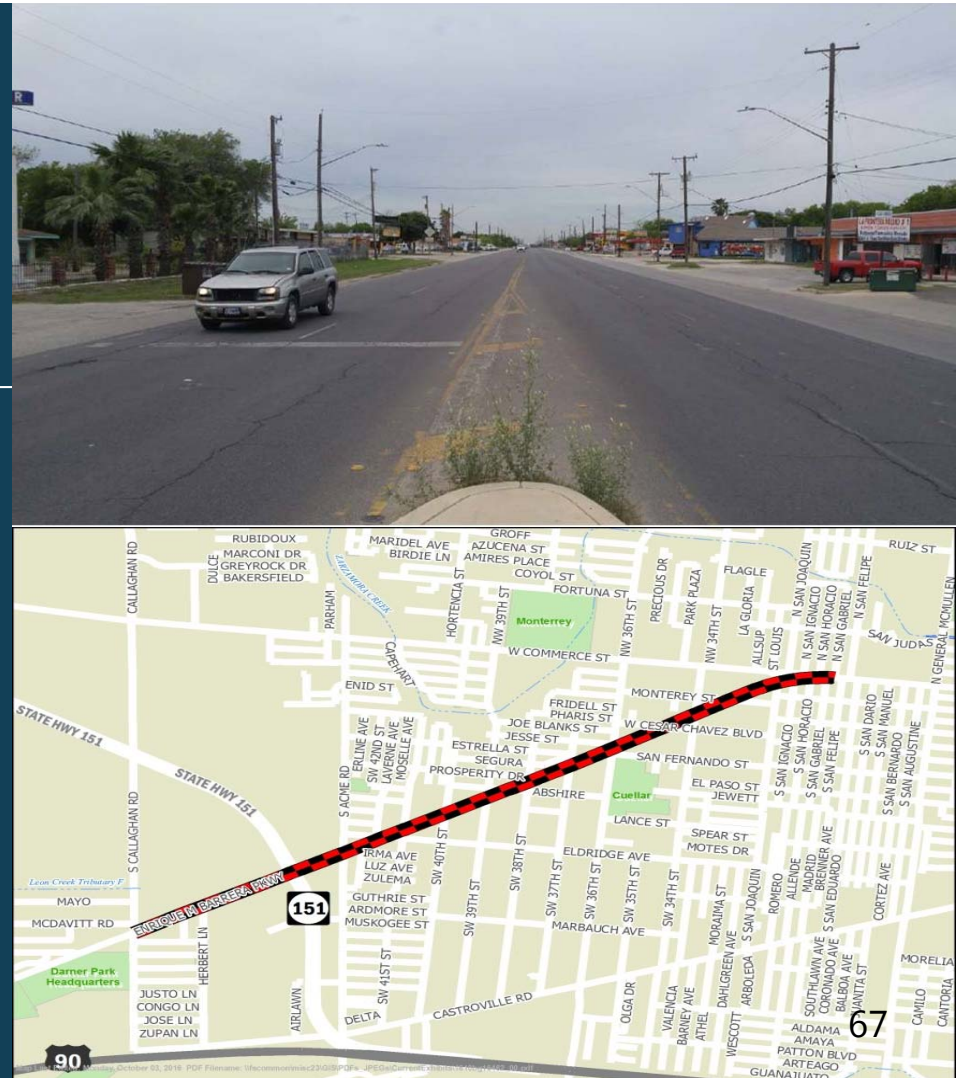
# Enrique Barrera Parkway Corridor Phase 1

## \$9 Million

Improve corridor with street, drainage and sidewalk improvements as needed.

### APPLIED GUIDING PRINCIPLES & SA TOMORROW CATEGORIES:

- 1, 2, 3, 6, 7, 8 & 10





# Heath Road & Grissom Road Intersection

## \$2.62 Million

This project will reconstruct and widen Heath Road to accommodate turning movements at the intersection with Grissom Road. Curbs, sidewalks, driveway approaches and traffic signals.

### APPLIED GUIDING PRINCIPLES & SA TOMORROW CATEGORIES:

- 1, 2, 3, 7, 8, 9 & 10



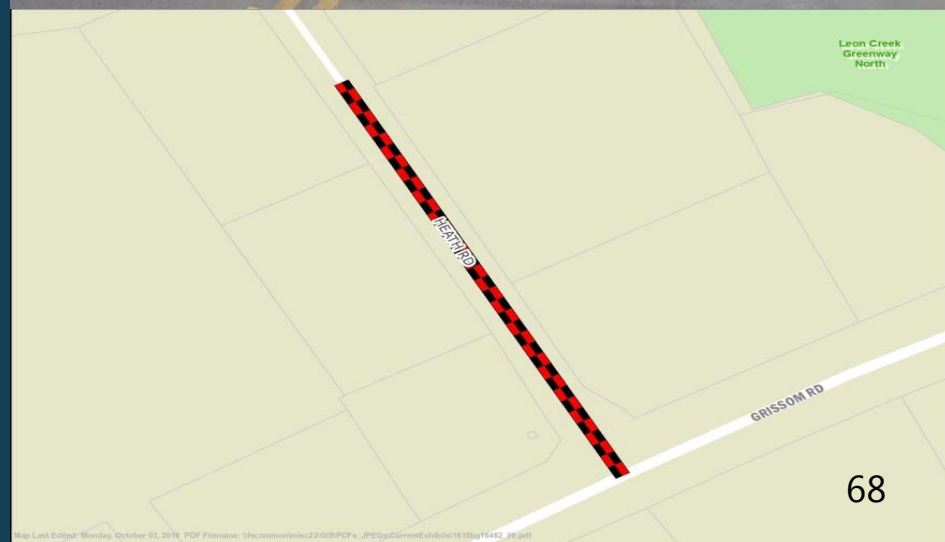
TRANSPORTATION  
& CONNECTIVITY



PUBLIC FACILITIES  
& COMMUNITY SAFETY



COMMUNITY HEALTH  
& WELLNESS



# Military Drive (Deadend to Potranco) & Ingram Connector (Deadend to Military)

**\$10 Million**

Construct extensions of Military and Ingram to include curbs, sidewalks, bike facilities, traffic signal and drainage improvements as needed. This is a leveraged project with developer.

## APPLIED GUIDING PRINCIPLES & SA TOMORROW CATEGORIES:

- 1, 2, 3, 4, 6, 7, 8, 9 & 10



TRANSPORTATION  
& CONNECTIVITY



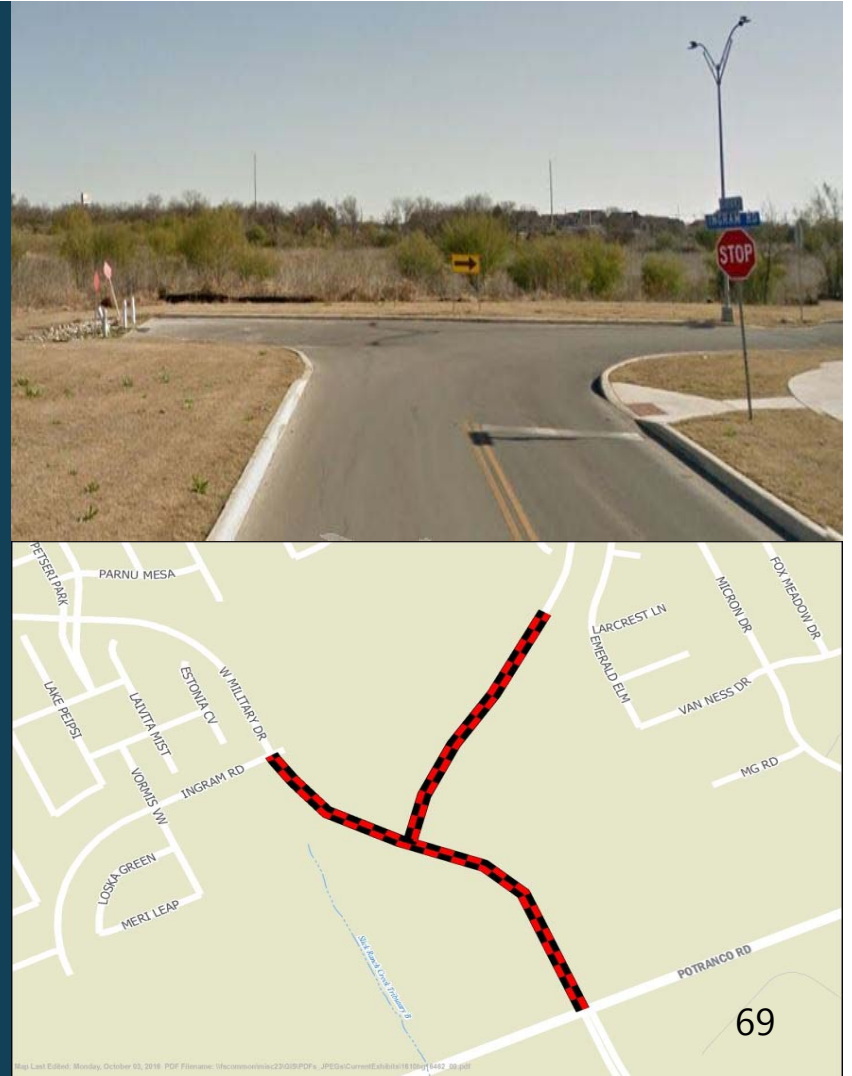
PUBLIC FACILITIES  
& COMMUNITY SAFETY



COMMUNITY HEALTH  
& WELLNESS



STRATEGIC  
DEVELOPMENT



# District 7 Pedestrian Mobility

**\$2 Million**

Pedestrian safety improvements to include sidewalks.

## APPLIED GUIDING PRINCIPLES & SA TOMORROW CATEGORIES:

- 1, 2, 3, 5, 6, 7, 8, & 10



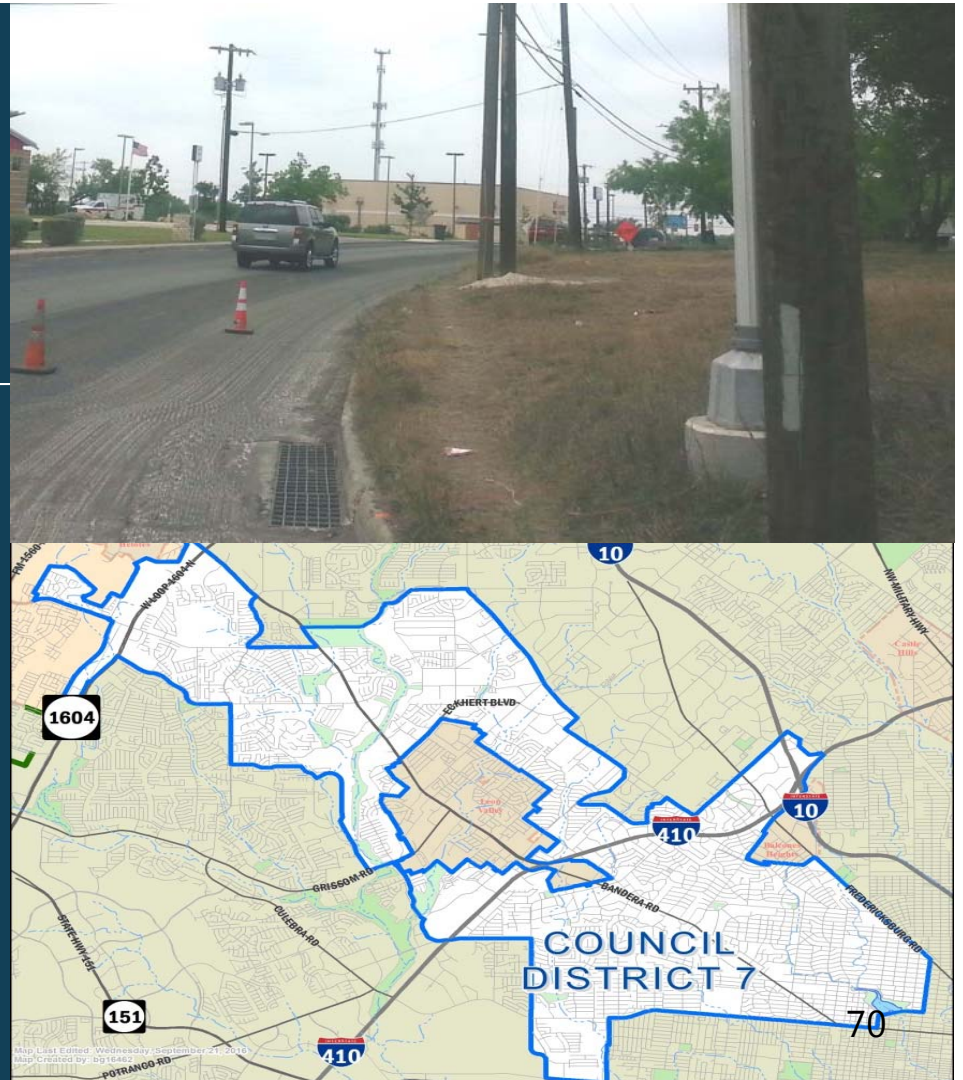
TRANSPORTATION  
& CONNECTIVITY



PUBLIC FACILITIES  
& COMMUNITY SAFETY



COMMUNITY HEALTH  
& WELLNESS





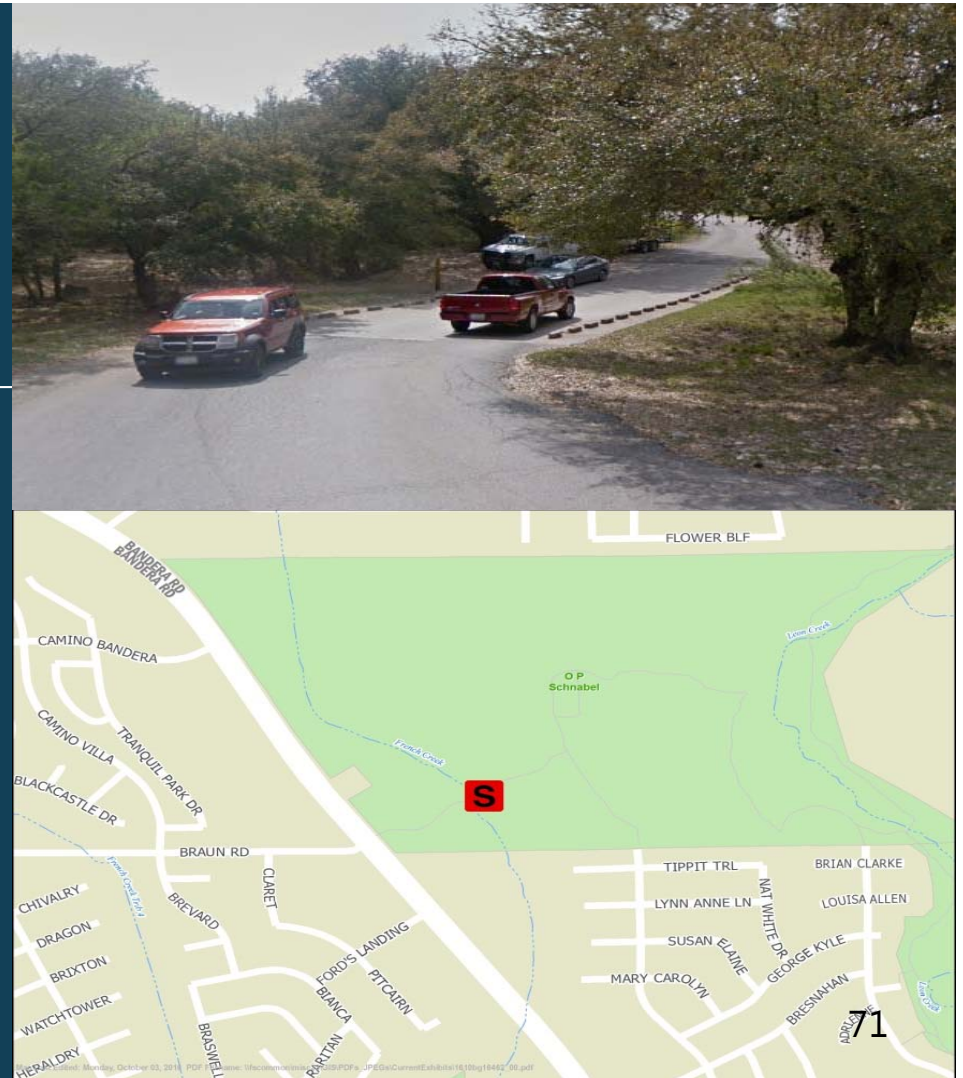
# O.P. Schnabel Park Entrance Improvements

## \$1.1 Million

Reconstruct roadway along park entrance to reduce drainage issues to enhance safety and access.

### APPLIED GUIDING PRINCIPLES & SA TOMORROW CATEGORIES:

- 1, 2, 3, 5, 9 & 10





# Woodlawn Area Streets

## \$8 Million

Project will make roadway and drainage improvements to neighborhood streets in Woodlawn areas: Mary Louise Drive (Kampmann to Fredericksburg), Lake Blvd (Mary Louise Drive to West Woodlawn Avenue) and Shadwell Drive (Colleen Drive to Wine Cup Drive).

### APPLIED GUIDING PRINCIPLES & SA TOMORROW CATEGORIES:

- 1, 2, 7, 8 & 10



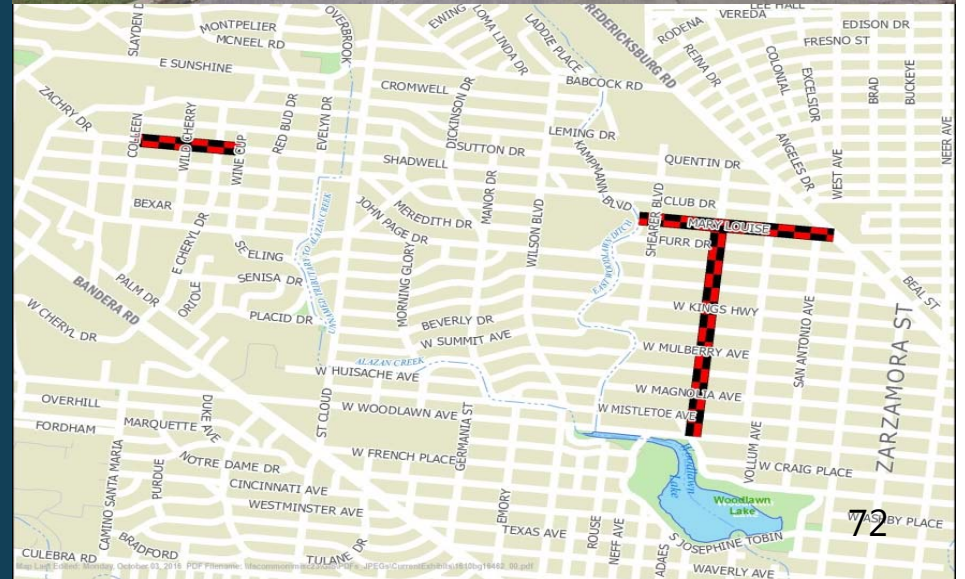
TRANSPORTATION  
& CONNECTIVITY



PUBLIC FACILITIES  
& COMMUNITY SAFETY



COMMUNITY HEALTH  
& WELLNESS



# DeZavala Corridor (IH 10 Frontage Rd to Lockhill Selma)

## \$15.5 Million

Reconstruct and widen roadway with curbs, sidewalks, driveway approaches, turn lanes at intersections, improved railroad crossing, signal modifications and drainage improvements .

### APPLIED GUIDING PRINCIPLES & SA TOMORROW CATEGORIES:

- 1, 2, 3, 5, 6, 7, 8, 9 & 10



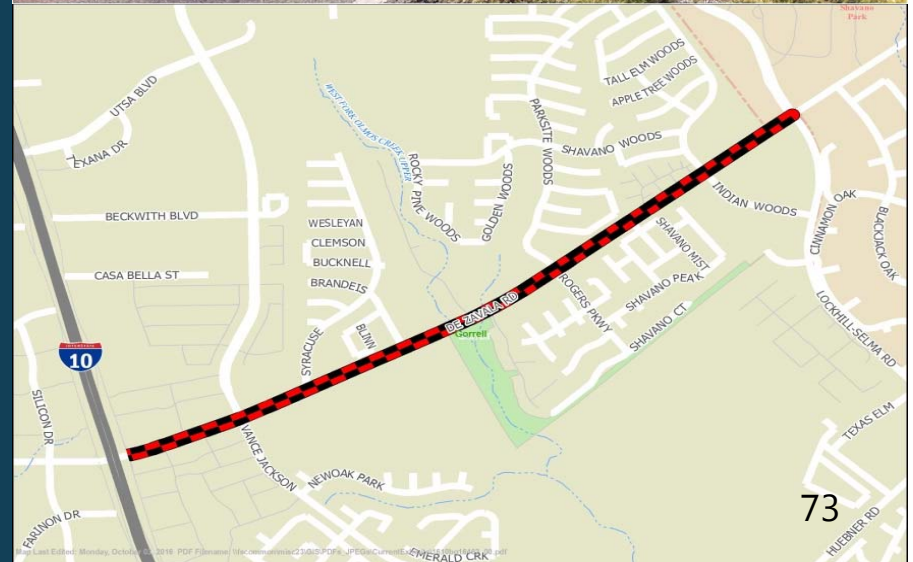
TRANSPORTATION  
& CONNECTIVITY



PUBLIC FACILITIES  
& COMMUNITY SAFETY



COMMUNITY HEALTH  
& WELLNESS





# Hardberger Park

## \$7.5 Million

Continued development of park based on approved Master Plan to include improvements associated with the land bridge over Wurzbach Parkway. This is City contribution to a public / private partnership.

### APPLIED GUIDING PRINCIPLES & SA TOMORROW CATEGORIES:

- 1, 2, 3, 4, 5, 7, 8, 9 & 10



TRANSPORTATION  
& CONNECTIVITY



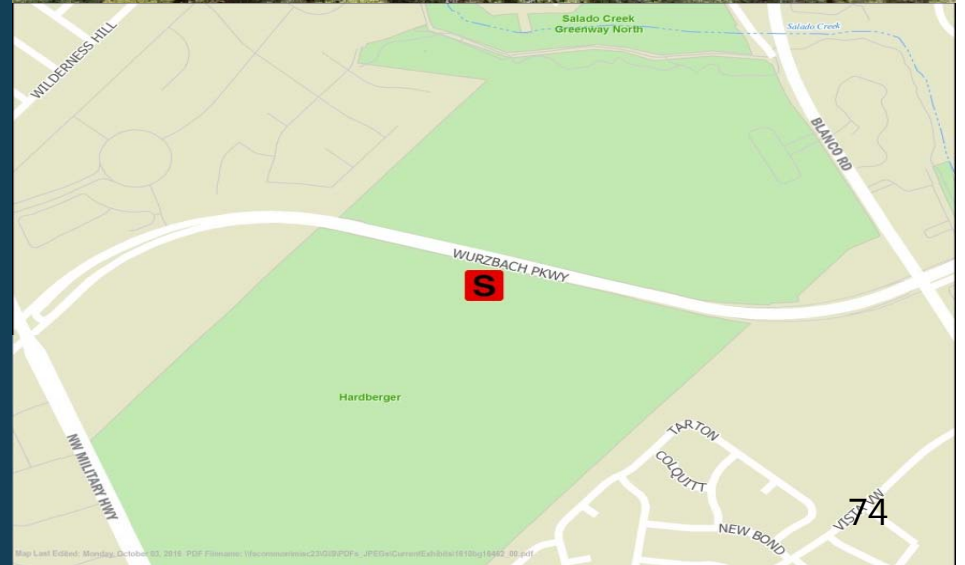
PUBLIC FACILITIES  
& COMMUNITY SAFETY



COMMUNITY HEALTH  
& WELLNESS



STRATEGIC  
DEVELOPMENT



# Medical Center Phase X (Ewing Halsell/Louis Pasteur Intersection)

**\$7.17 Million**

Intersection and drainage improvements within the Medical Center Area. This is a continuation of cooperative work with the Medical Center Alliance begun with earlier bond programs.

## **APPLIED GUIDING PRINCIPLES & SA TOMORROW CATEGORIES:**

- 1, 2, 3, 4, 5, 6, 7, 8, 9 & 10



TRANSPORTATION  
& CONNECTIVITY



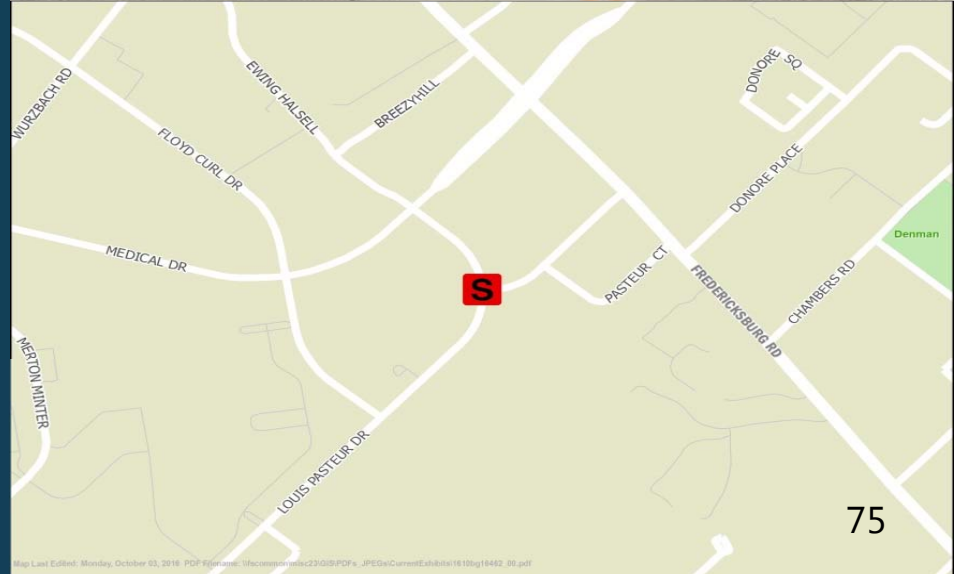
PUBLIC FACILITIES  
& COMMUNITY SAFETY



COMMUNITY HEALTH  
& WELLNESS



STRATEGIC  
DEVELOPMENT



Map Last Edited: Monday, October 03, 2016 PDF Filename: 10ecommplan2310109.PDF s\_JPEGCurrentExhibit/16100916462\_00.pdf



# Medical Center (Right Turn Lane on Louis Pasteur at Babcock)

**\$1.6 Million**

Construct a right turn lane on Louis Pasteur where it intersects Babcock. This is a continuation of cooperative work with the Medical Center Alliance begun in earlier bond programs.

## APPLIED GUIDING PRINCIPLES & SA TOMORROW CATEGORIES:

- 1, 2, 3, 4, 5, 6, 7, 8, 9 & 10



TRANSPORTATION  
& CONNECTIVITY



PUBLIC FACILITIES  
& COMMUNITY SAFETY



COMMUNITY HEALTH  
& WELLNESS



STRATEGIC  
DEVELOPMENT



# Prue Road (Babcock Road to Laureate Drive)

**\$27.6 Million**

Widen and reconstruct roadway with curbs, sidewalks, driveway approaches, intersection, traffic signal and drainage improvements as needed.

## APPLIED GUIDING PRINCIPLES & SA TOMORROW CATEGORIES:

- 1, 2, 3, 5, 6, 7, 8, 9 & 10



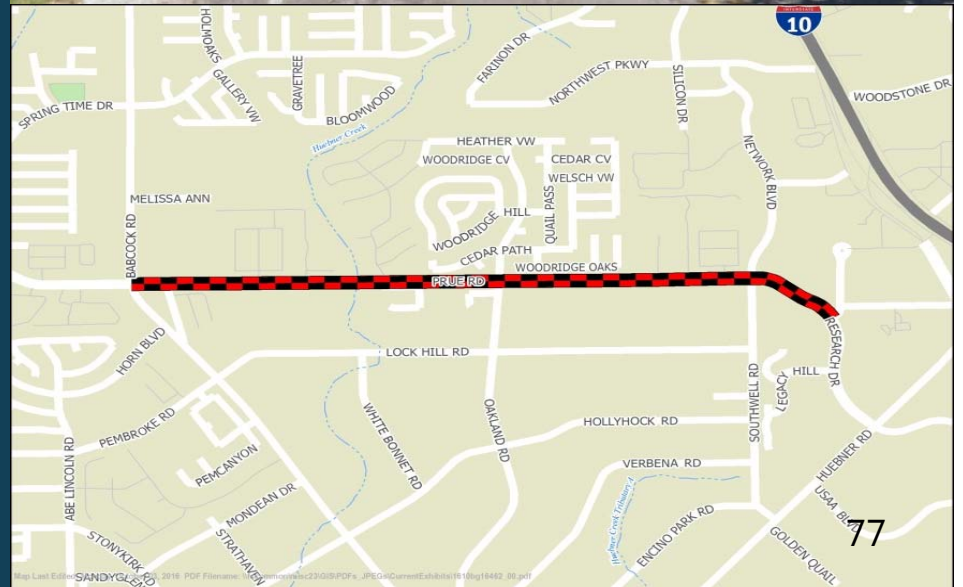
TRANSPORTATION  
& CONNECTIVITY



PUBLIC FACILITIES  
& COMMUNITY SAFETY



COMMUNITY HEALTH  
& WELLNESS



# Wurzbach Corridor Improvements

**\$2 Million**

This project will leverage state and federal funding that includes improvements at key intersections along the Wurzbach corridor.

## APPLIED GUIDING PRINCIPLES & SA TOMORROW CATEGORIES:

- 1, 2, 3, 4, 5, 6, 7, 9 & 10



TRANSPORTATION  
& CONNECTIVITY



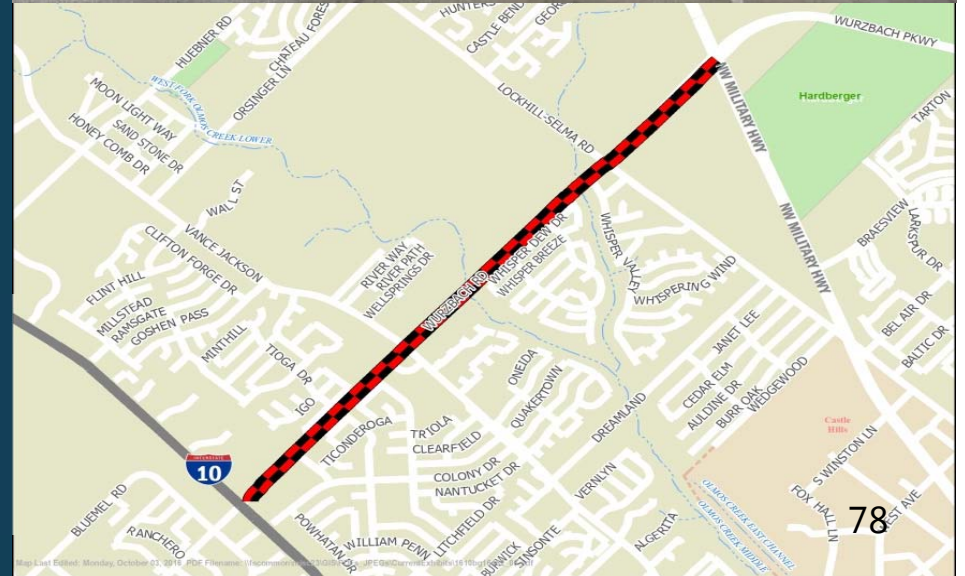
PUBLIC FACILITIES  
& COMMUNITY SAFETY



COMMUNITY HEALTH  
& WELLNESS



STRATEGIC  
DEVELOPMENT





# Bitters Road Intersections & Sidewalks (Savannah Pass to Blanco Road)

**\$5.08 Million**

Intersection, traffic signal and sidewalk improvements to include adding left turn lanes at Savannah Pass and Partridge Trail and a dedicated right turn lane from Bitters onto northbound Blanco Road.

## APPLIED GUIDING PRINCIPLES & SA TOMORROW CATEGORIES:

- 1, 2, 3, 6, 7, 8, 9 & 10



TRANSPORTATION  
& CONNECTIVITY



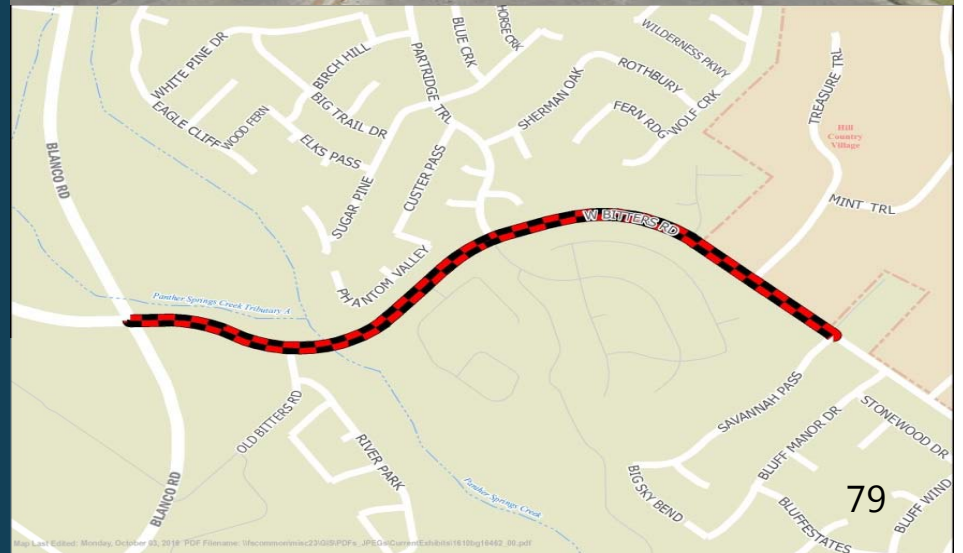
PUBLIC FACILITIES  
& COMMUNITY SAFETY



COMMUNITY HEALTH  
& WELLNESS



STRATEGIC  
DEVELOPMENT



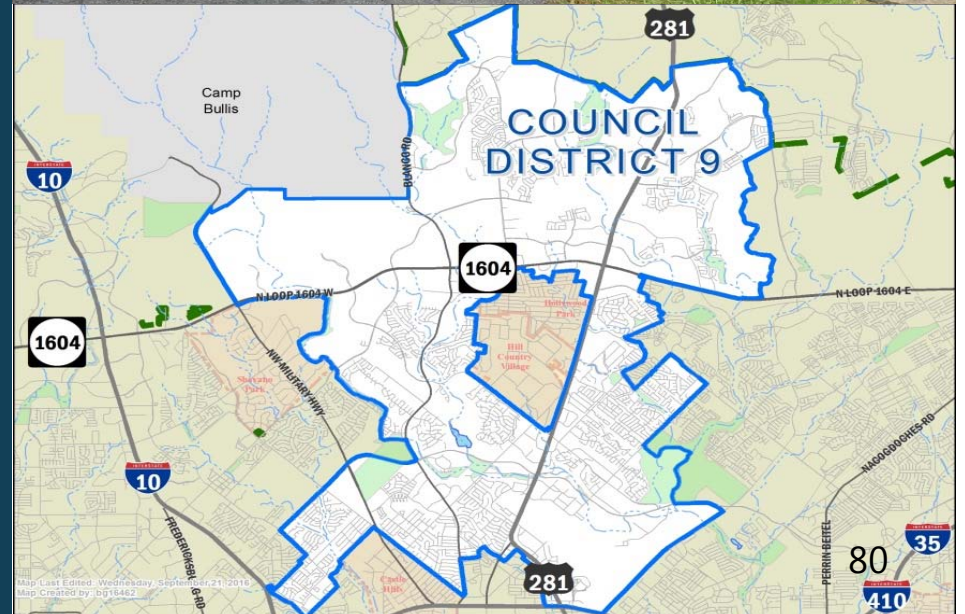


# District 9 Pedestrian Mobility \$4 Million

Pedestrian safety improvements to include sidewalks.

## APPLIED GUIDING PRINCIPLES & SA TOMORROW CATEGORIES:

- 1, 2, 3, 5, 6, 7, 8 & 10



# Evans Road Intersection & Corridor Improvements

**\$2.7 Million**

Corridor and intersection improvements on Evans Road from Hwy 281 to Caliza Drive, to include: medians, acceleration / deceleration lanes and traffic signal improvements.

## APPLIED GUIDING PRINCIPLES & SA TOMORROW CATEGORIES:

- 1, 2, 6, 8 & 10



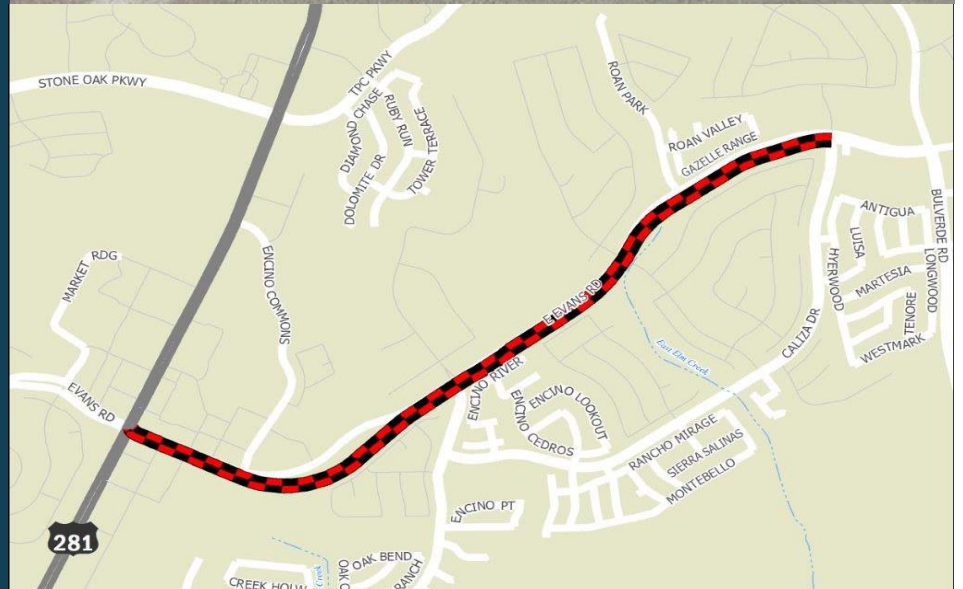
TRANSPORTATION  
& CONNECTIVITY



PUBLIC FACILITIES  
& COMMUNITY SAFETY



COMMUNITY HEALTH  
& WELLNESS





# Hardy Oak and Huebner Road Extensions

**\$6.3 Million**

Developer agreement to construct new roads through the Classen - Steubing Ranch property.

## APPLIED GUIDING PRINCIPLES & SA TOMORROW CATEGORIES:

- 1, 2, 3, 4, 5, 6, 7, 8, 9 & 10



TRANSPORTATION  
& CONNECTIVITY



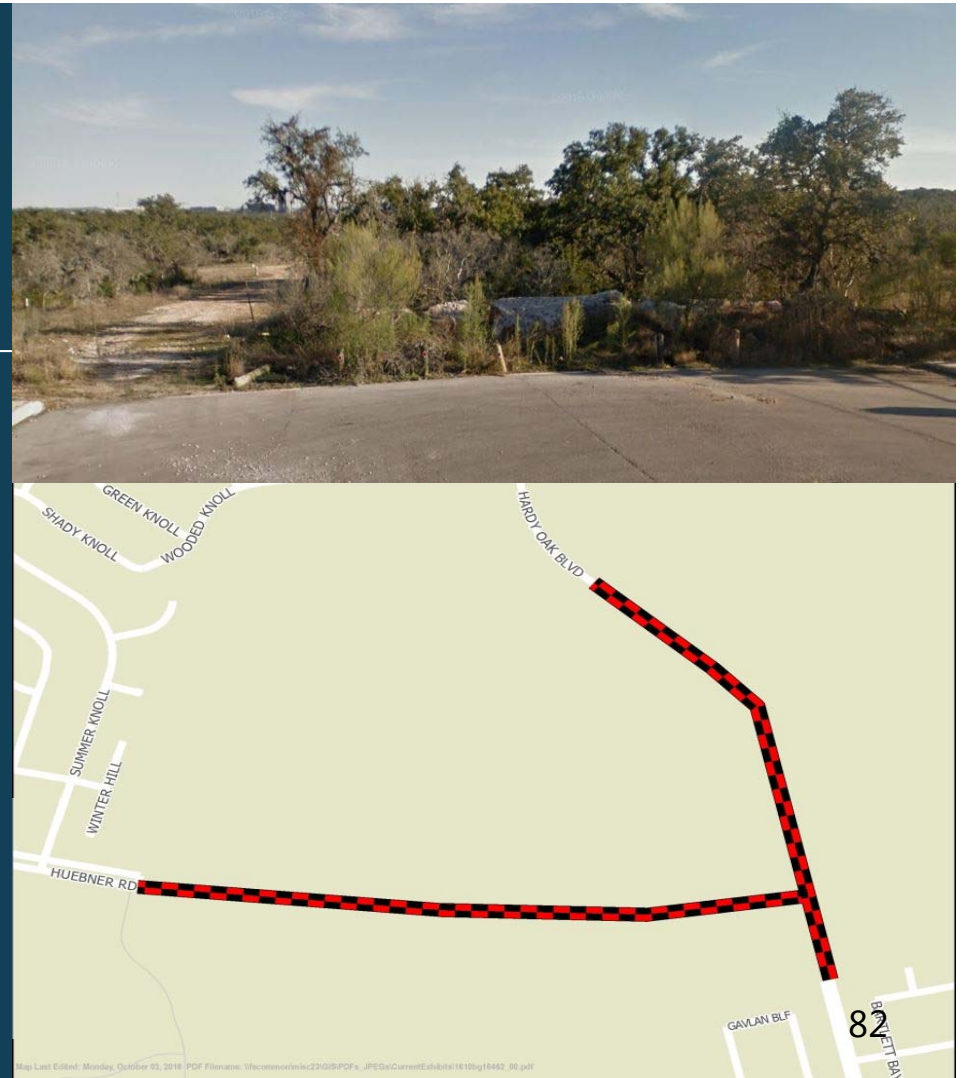
PUBLIC FACILITIES  
& COMMUNITY SAFETY



COMMUNITY HEALTH  
& WELLNESS



STRATEGIC  
DEVELOPMENT



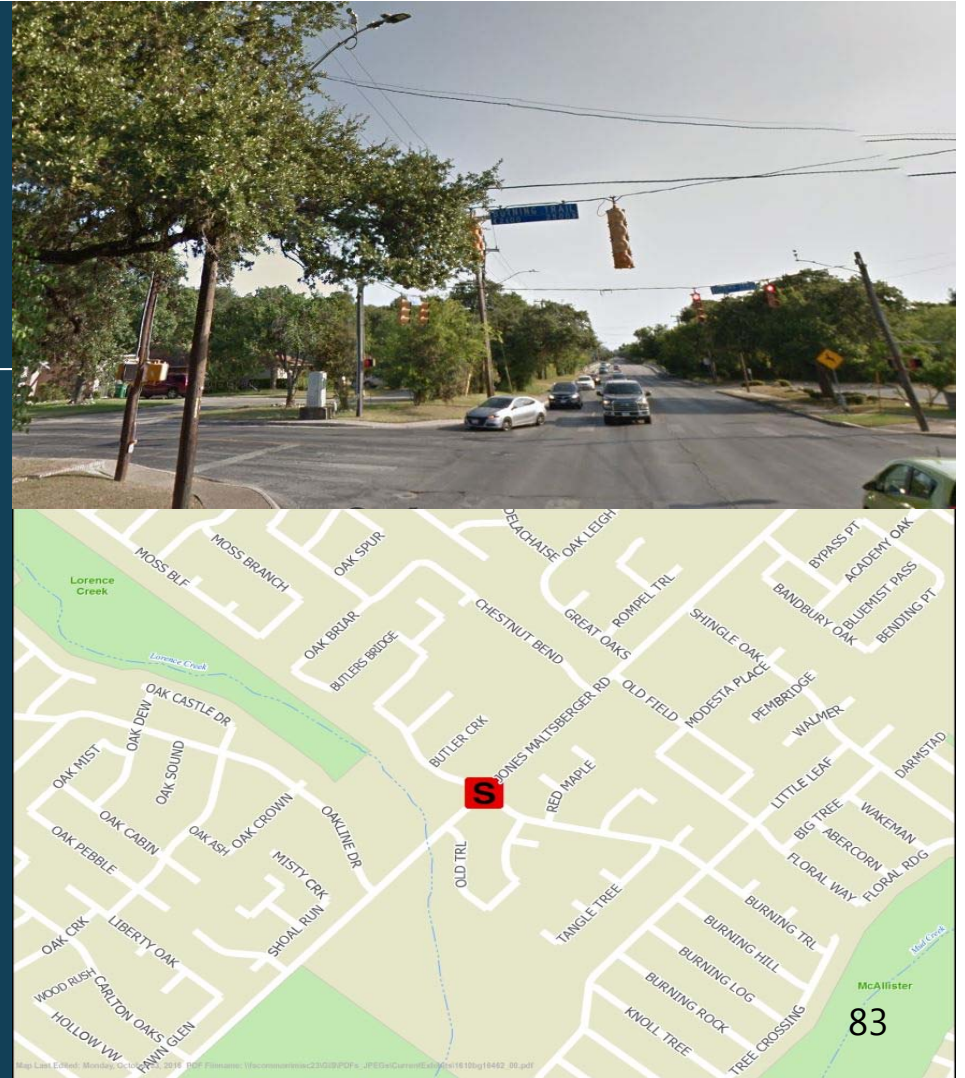
Map Last Edited: Monday, October 03, 2016 | PDF Filename: \\hccomm\mimac23\0109\PDFs\_JPEGs\Current\Exhibits\161009\16462\_00.pdf

# Jones Maltzberger/Burning Trail Intersection Improvements **\$1.6 Million**

Reconfigure the intersection to provide left-turn lanes on Jones Maltzberger with signal improvements as needed.

## APPLIED GUIDING PRINCIPLES & SA TOMORROW CATEGORIES:

- 1, 2, 3, 6, 7, 8 & 10





# 1604/Bulverde Road Turnarounds

**\$500,000**

Contribute funds to construct turnarounds under the 1604 / Bulverde road intersection. This leveraged project will be done by the Texas Department of Transportation.

## APPLIED GUIDING PRINCIPLES & SA TOMORROW CATEGORIES:

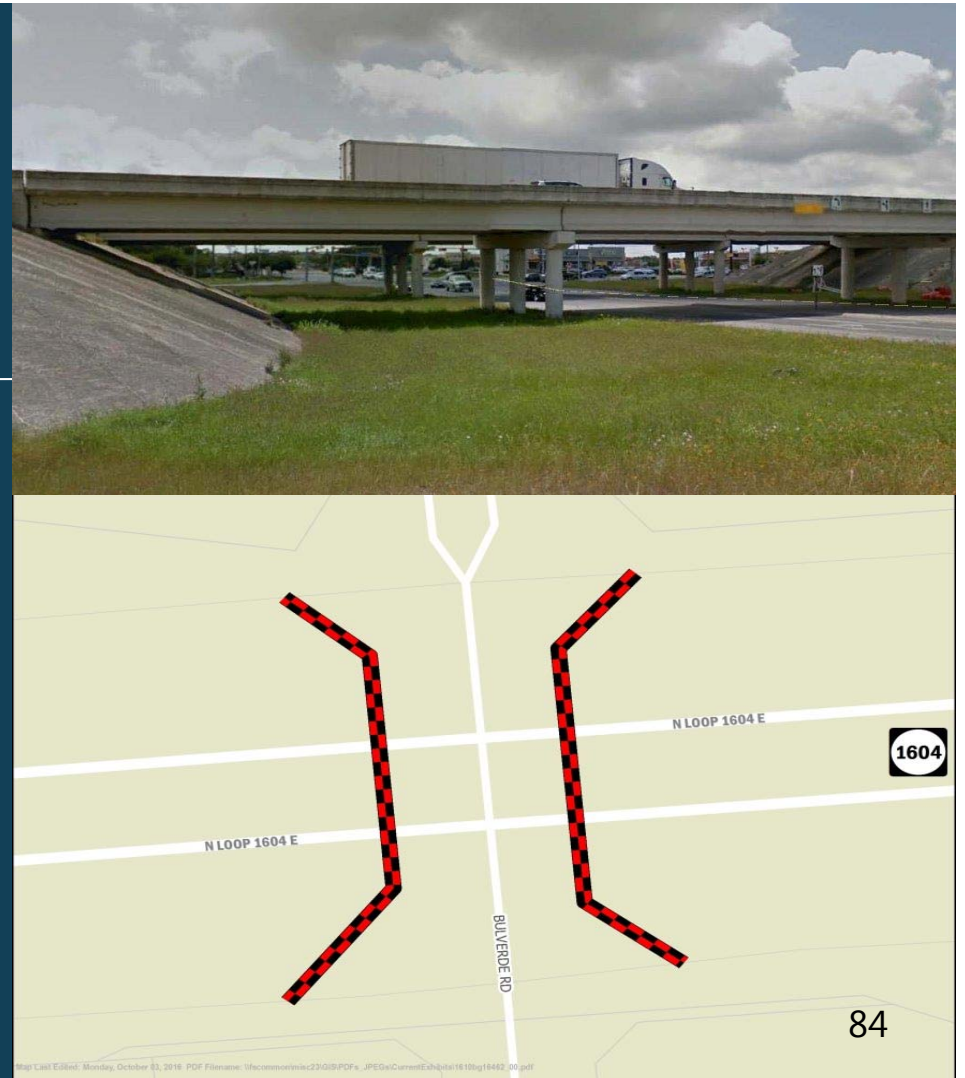
- 1, 2, 3, 4, 6, 9



TRANSPORTATION  
& CONNECTIVITY



STRATEGIC  
DEVELOPMENT



# Bulverde Phase 1 (Butterleigh To North of Quiet Meadow)

## \$20 Million

Reconstruct and widen roadway with curbs, sidewalks, driveway approaches, traffic signal and drainage improvements. Continuation of Bexar County street/drainage improvements project to realign Jung Road at Quiet Meadow.

### APPLIED GUIDING PRINCIPLES & SA TOMORROW CATEGORIES:

- 1, 2, 3, 5, 6, 7, 8, 9 & 10



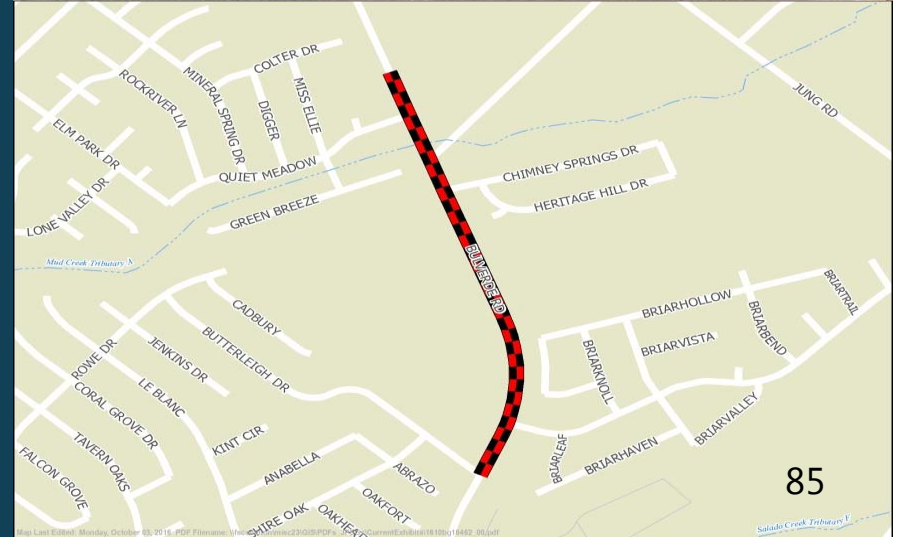
TRANSPORTATION  
& CONNECTIVITY



PUBLIC FACILITIES  
& COMMUNITY SAFETY



COMMUNITY HEALTH  
& WELLNESS



85

# Harry Wurzbach / Austin Highway Connectors

## \$3 Million

Provide supplemental funding to construct two remaining ramps at Harry Wurzbach/Austin Highway. Project design and initial construction funded by City and Texas Department of Transportation.

### APPLIED GUIDING PRINCIPLES & SA TOMORROW CATEGORIES:

- 1, 2, 3, 4, 5, 6, 7, 8, 9 & 10



TRANSPORTATION  
& CONNECTIVITY



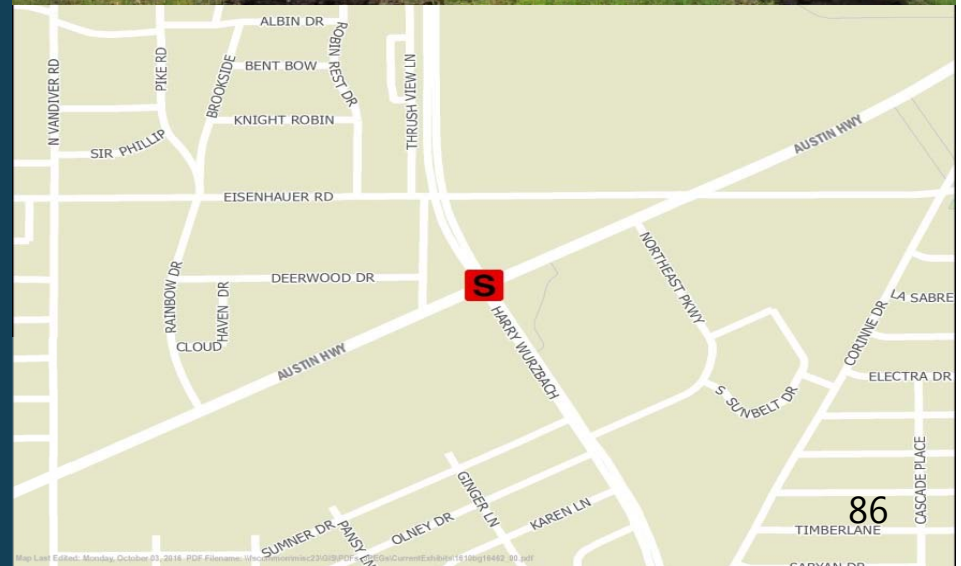
PUBLIC FACILITIES  
& COMMUNITY SAFETY



COMMUNITY HEALTH  
& WELLNESS



STRATEGIC  
DEVELOPMENT





## Public Art

### \$4.5 Million

For construction, acquisition and development of public art and design enhancements as related to Streets, Bridges & Sidewalk projects.

#### APPLIED GUIDING PRINCIPLES & SA TOMORROW CATEGORIES:

- 1, 2, 10 & 11



STRATEGIC  
DEVELOPMENT





