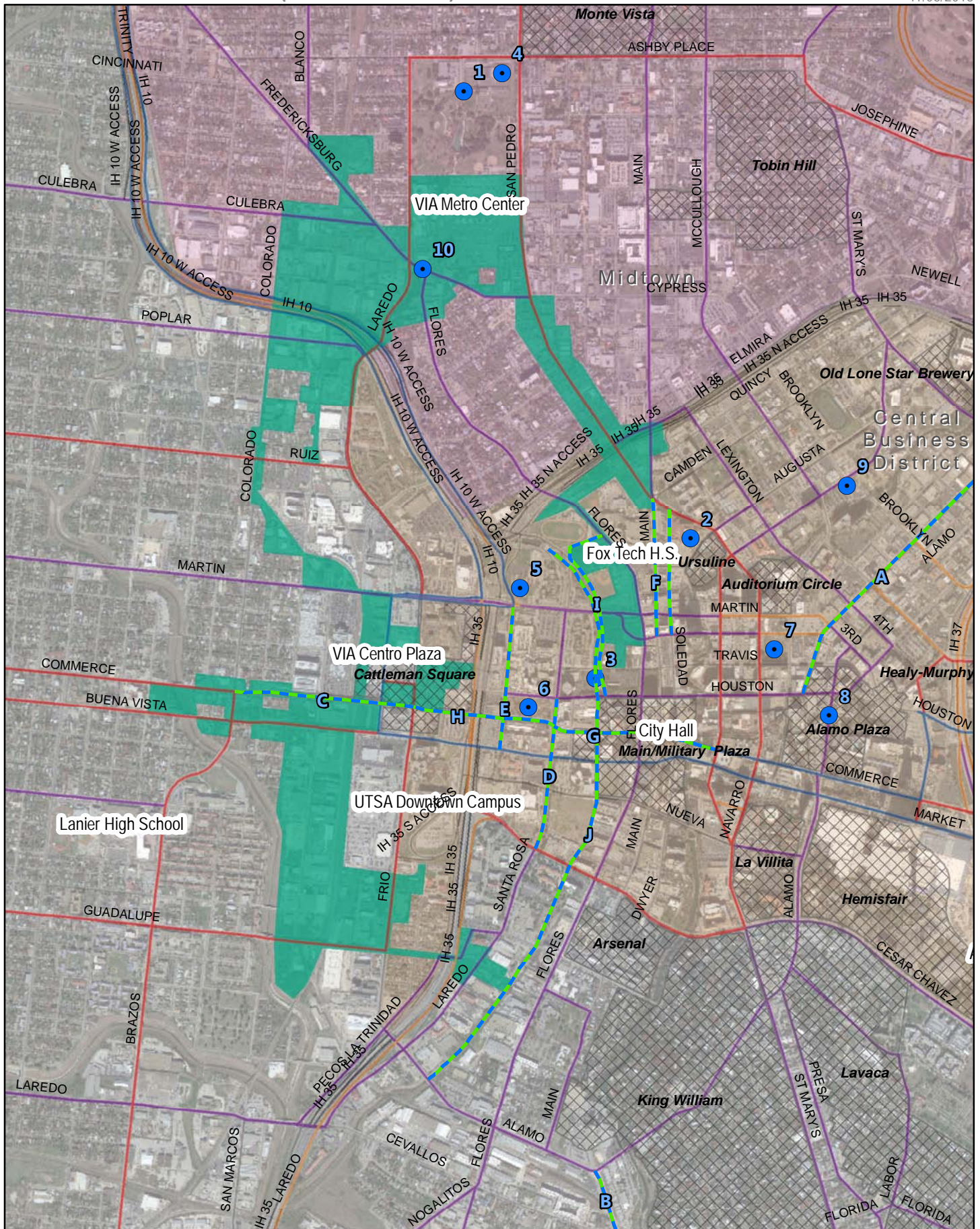


Draft Neighborhood Improvement Areas Near West-Five Points (Districts 1 & 5)

#1

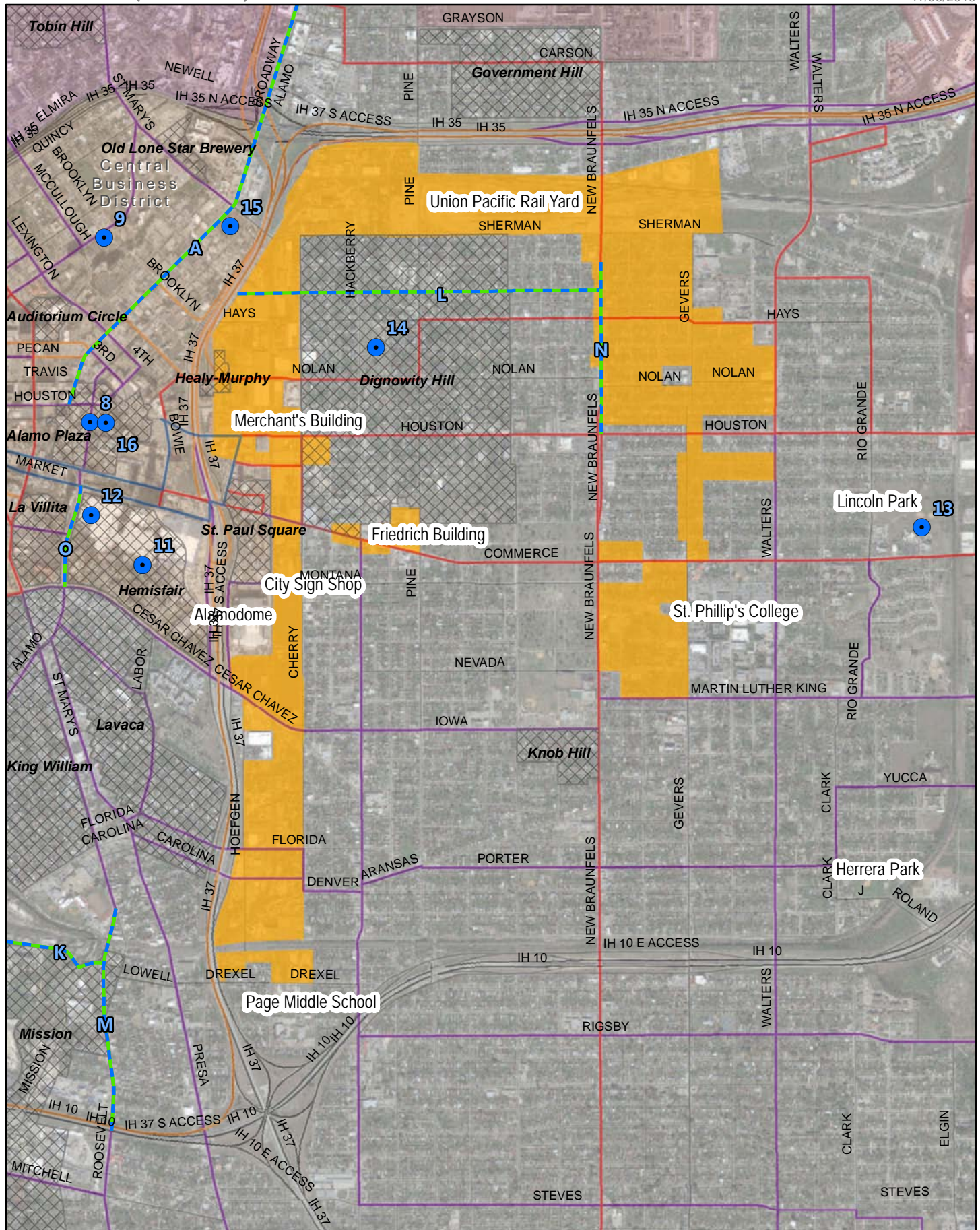
DRAFT - For Discussion Only
11/08/2016



Draft Neighborhood Improvement Areas Near East (District 2)

#2

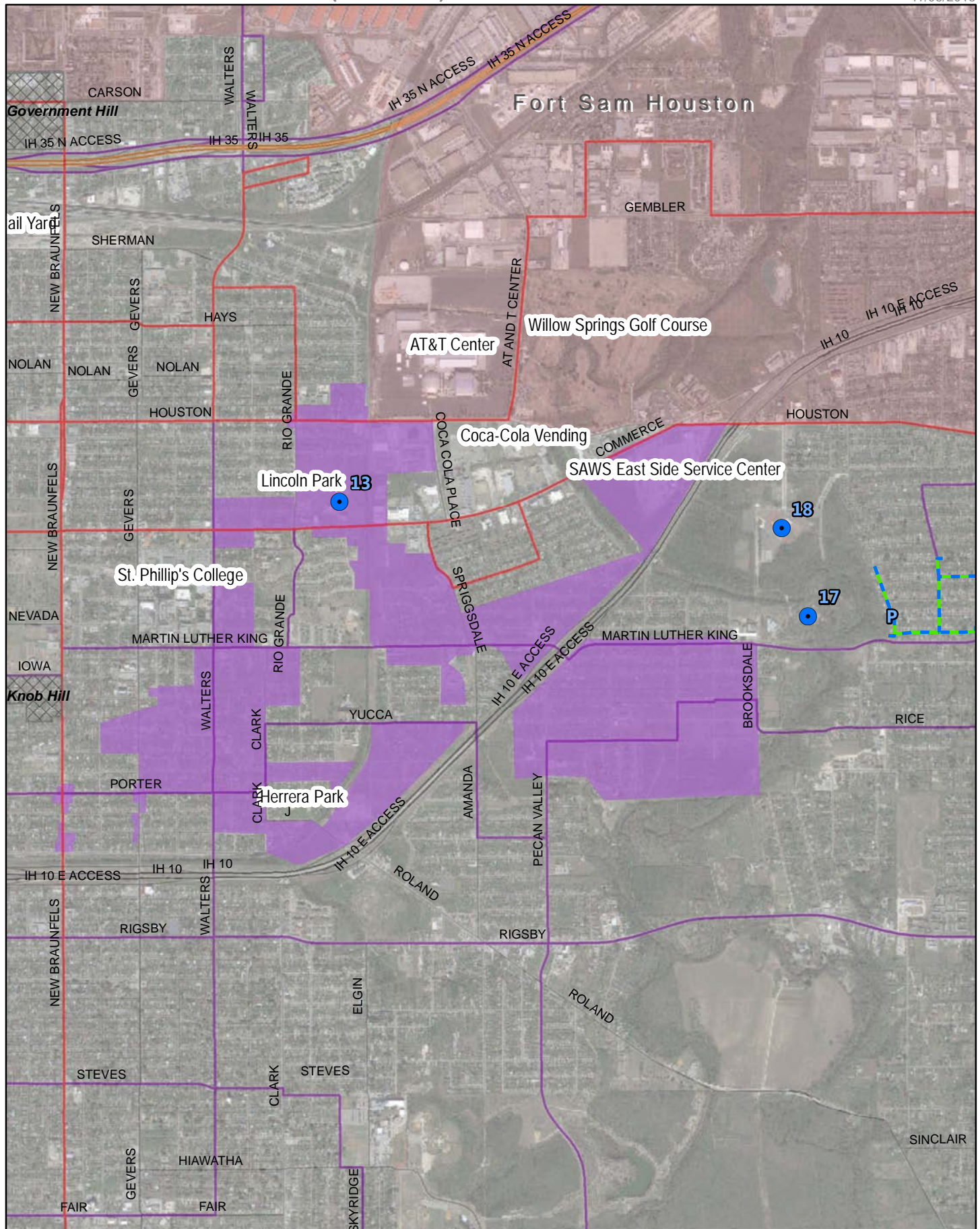
DRAFT - For Discussion Only
11/08/2016



Draft Neighborhood Improvement Areas Lincoln Park-Arena District (District 2)

#3

DRAFT - For Discussion Only
11/08/2016



Draft Neighborhood Improvement Areas East Southcross (District 3)

#4

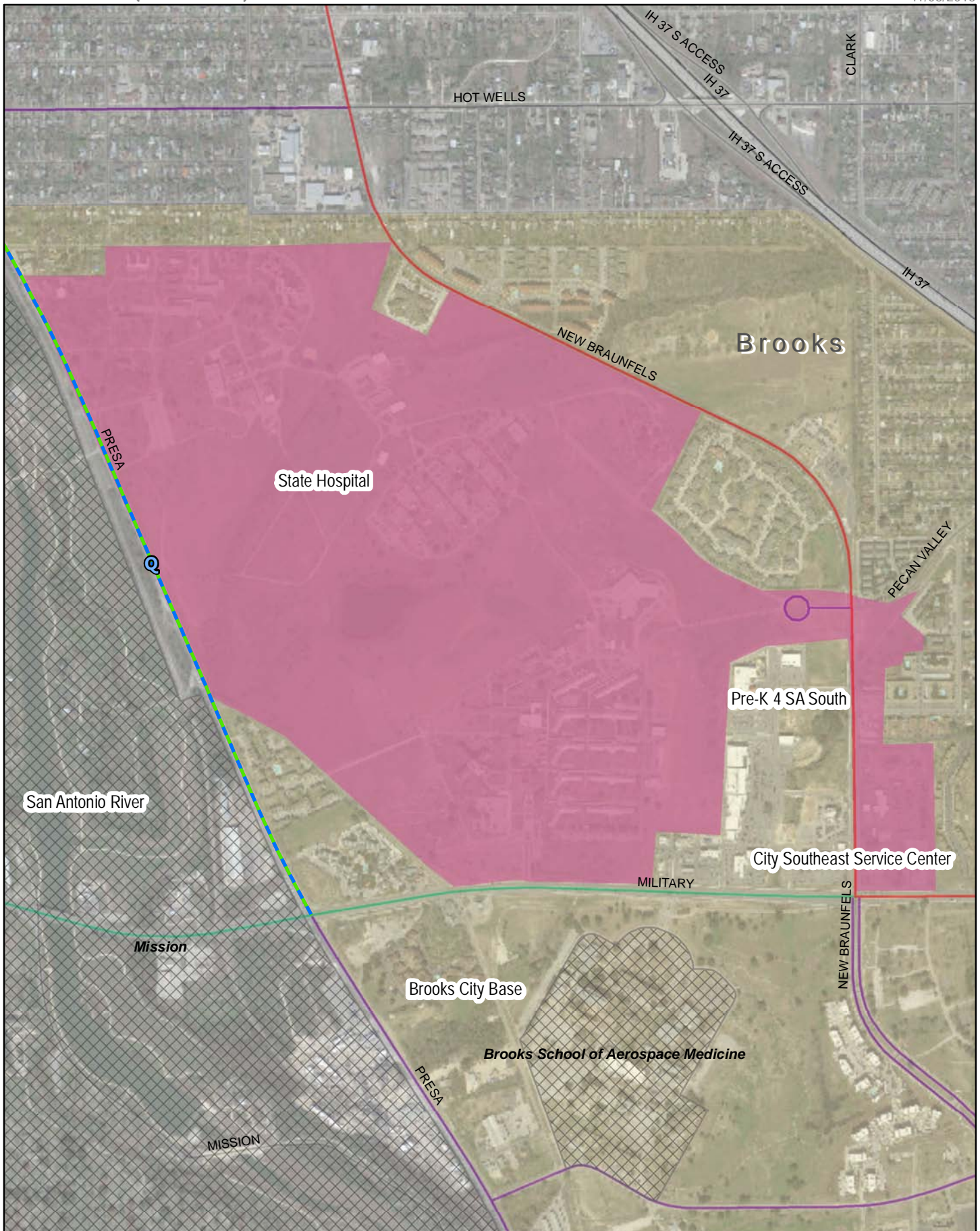
DRAFT - For Discussion Only
11/07/2016



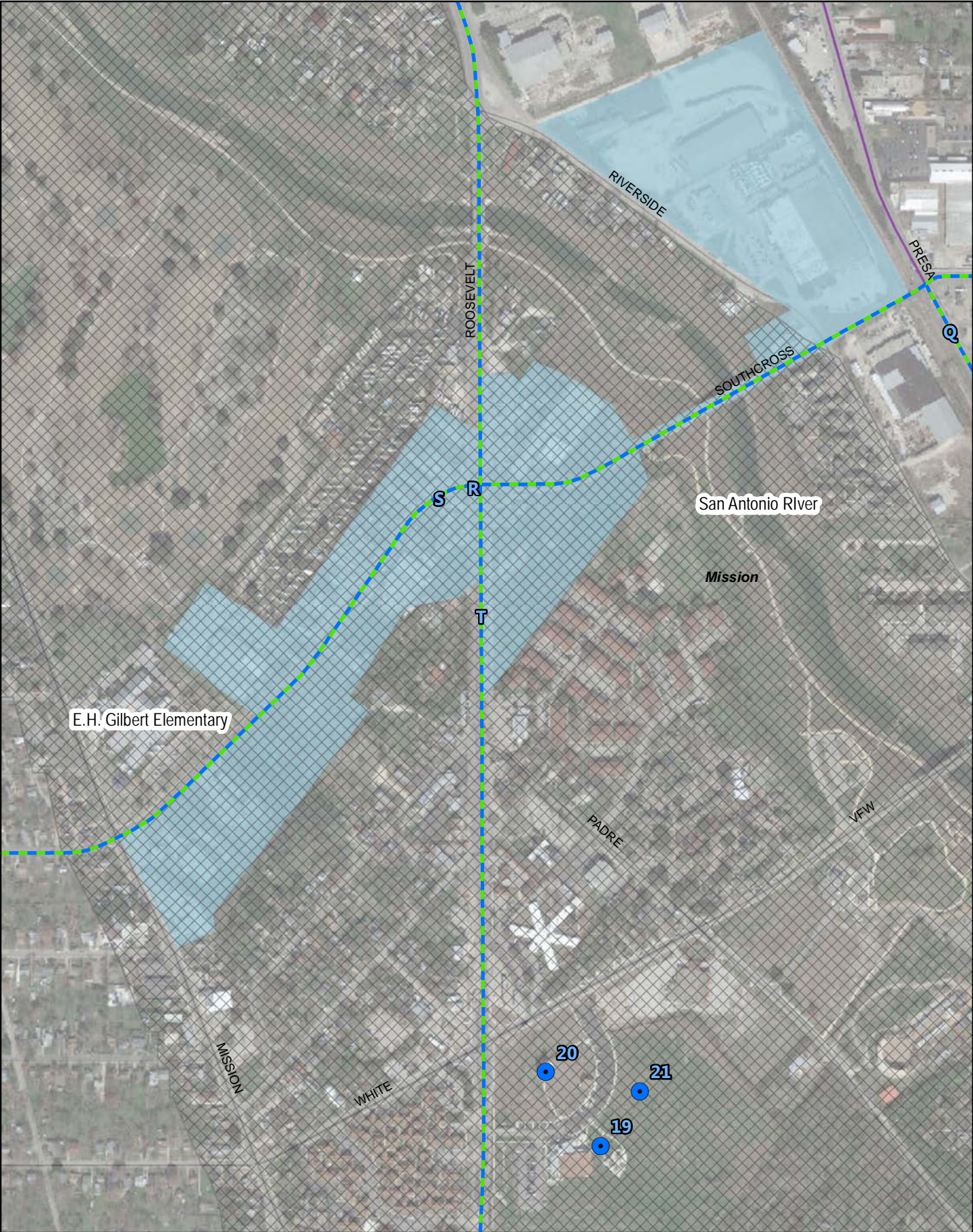
Draft Neighborhood Improvement Areas Southeast (District 3)

#5

DRAFT - For Discussion Only
11/08/2016



Draft Neighborhood Improvement Areas
Roosevelt-Mission Reach (District 3)



Draft Neighborhood Improvement Areas South Park (District 4)

#7

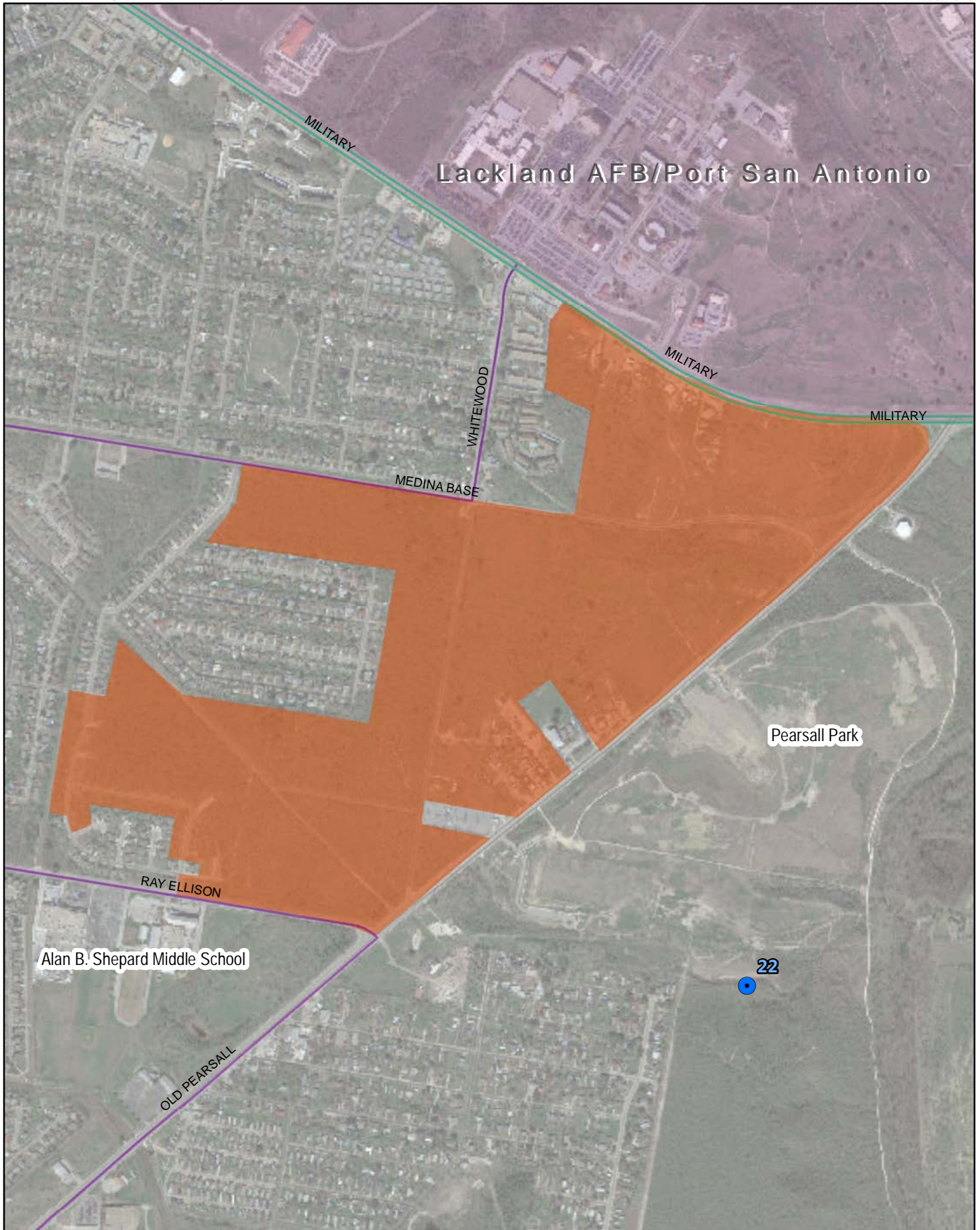
DRAFT - For Discussion Only
11/07/2016



Draft Neighborhood Improvement Areas Pearsall (District 4)

#8

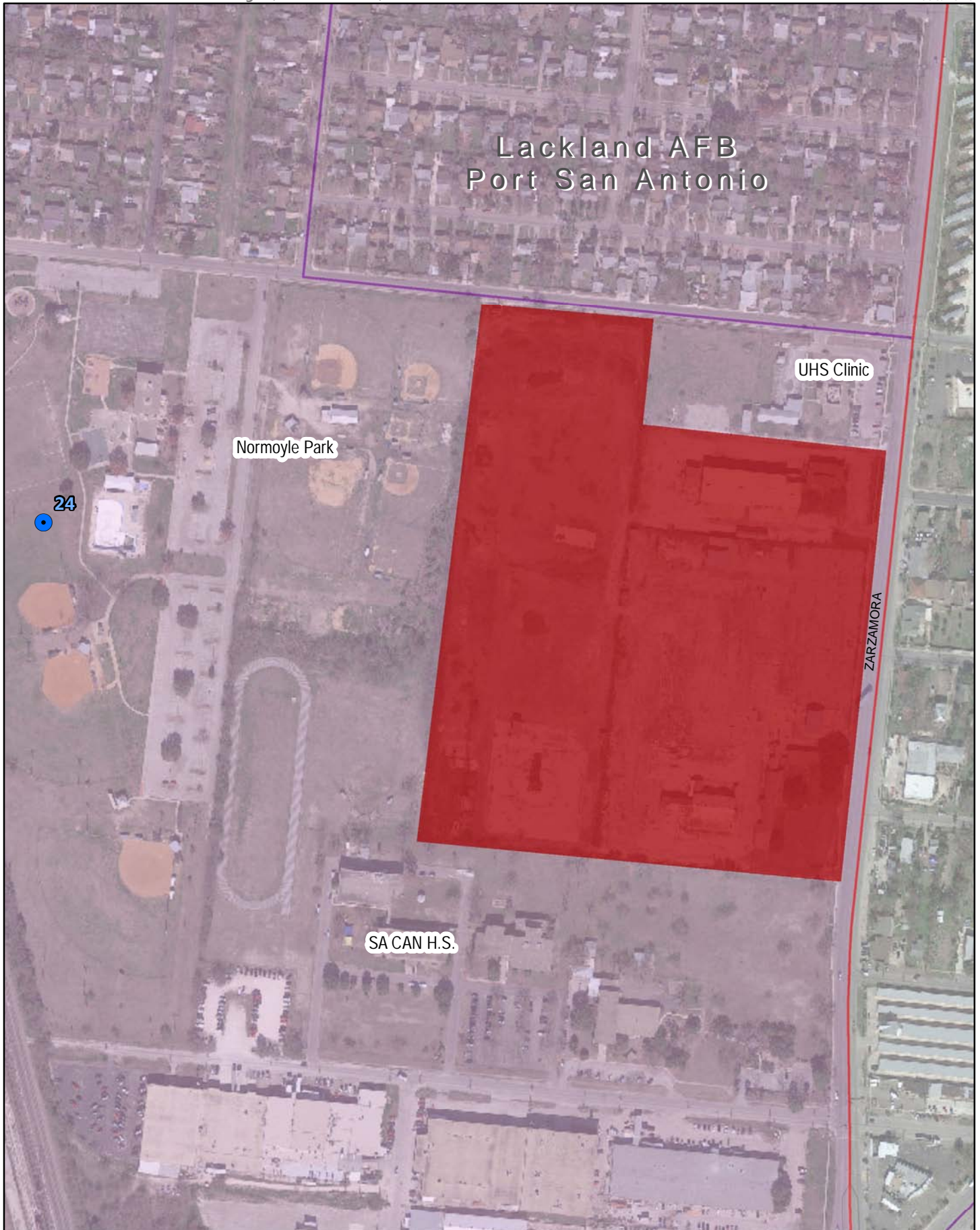
DRAFT - For Discussion Only
11/08/2016



Draft Neighborhood Improvement Areas Former Fire Academy (District 5)

#9

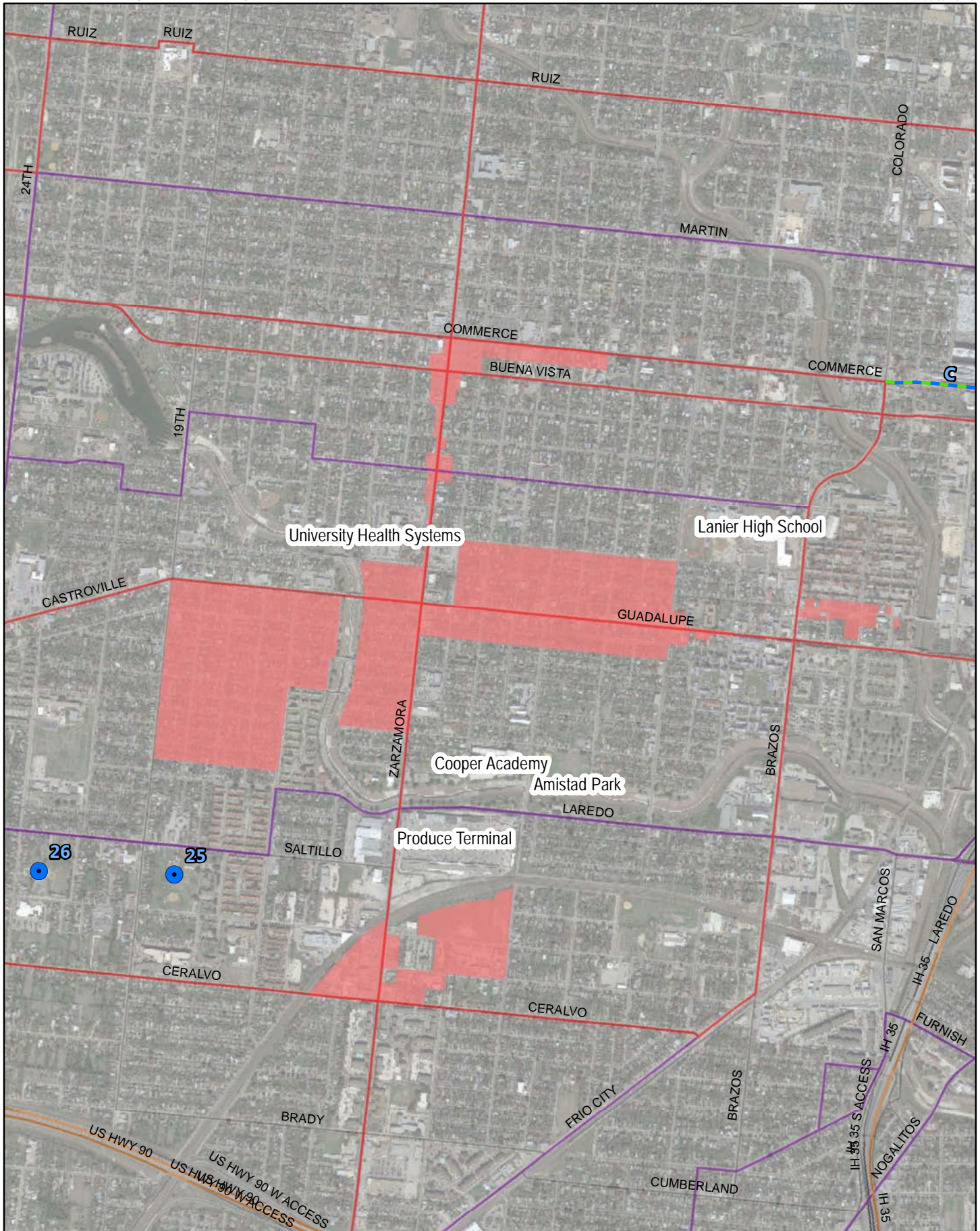
DRAFT - For Discussion Only
11/08/2016



Draft Neighborhood Improvement Areas West Side (District 5)

#10

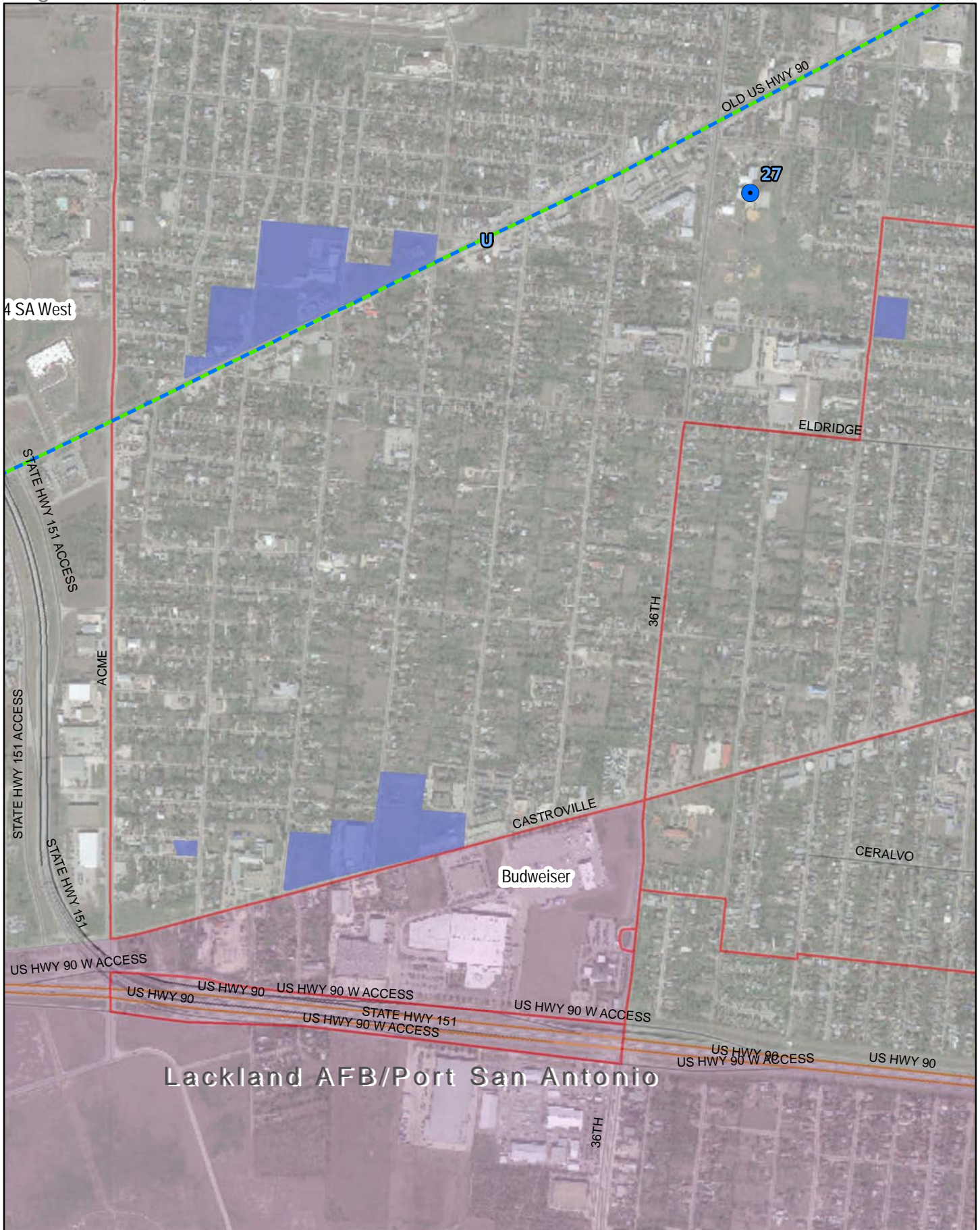
DRAFT - For Discussion Only
11/08/2016



Draft Neighborhood Improvement Areas Edgewood (District 6)

#11

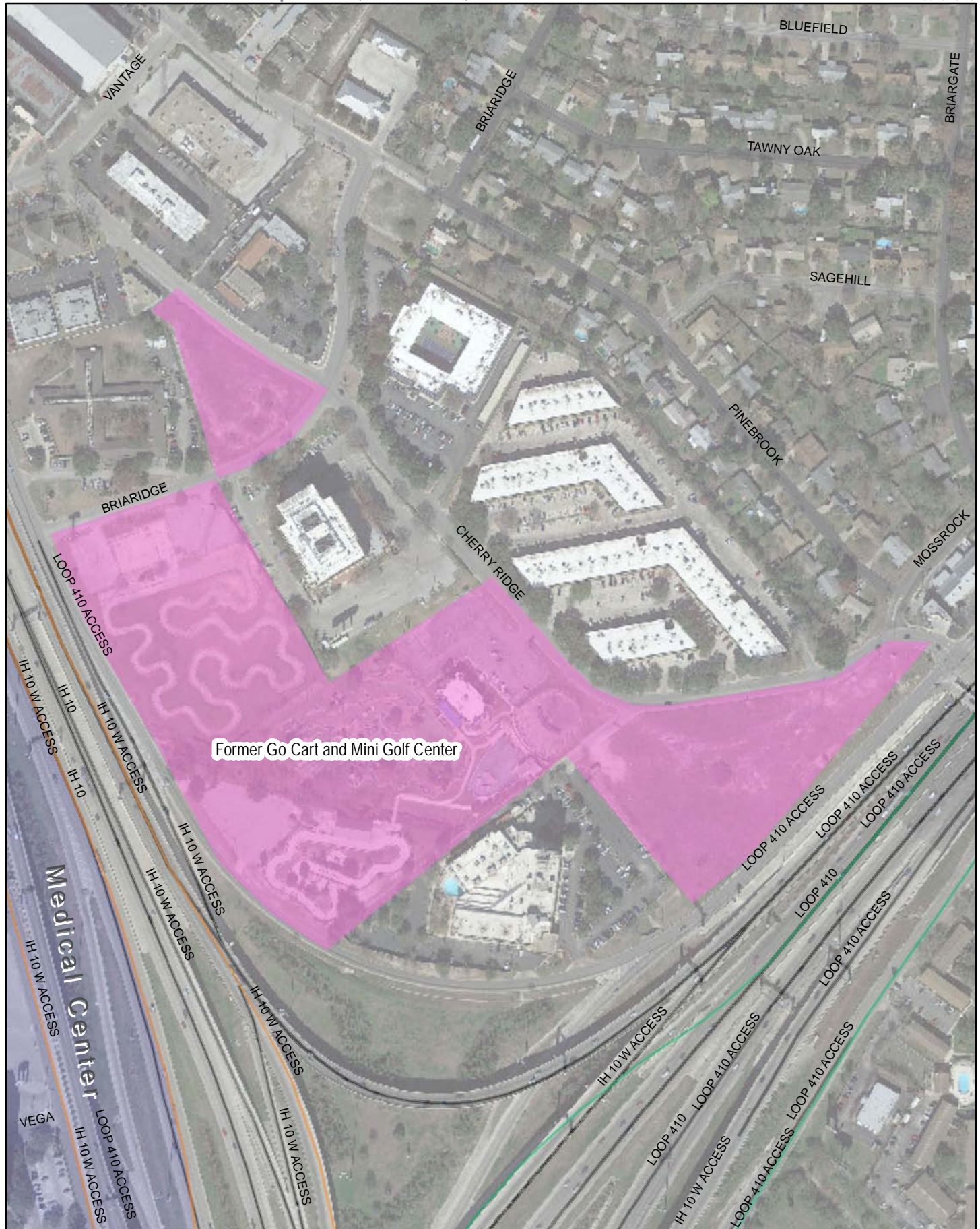
DRAFT - For Discussion Only
11/08/2016



Draft Neighborhood Improvement Areas Northwest IH-10 at Loop 410 (District 7)

#12

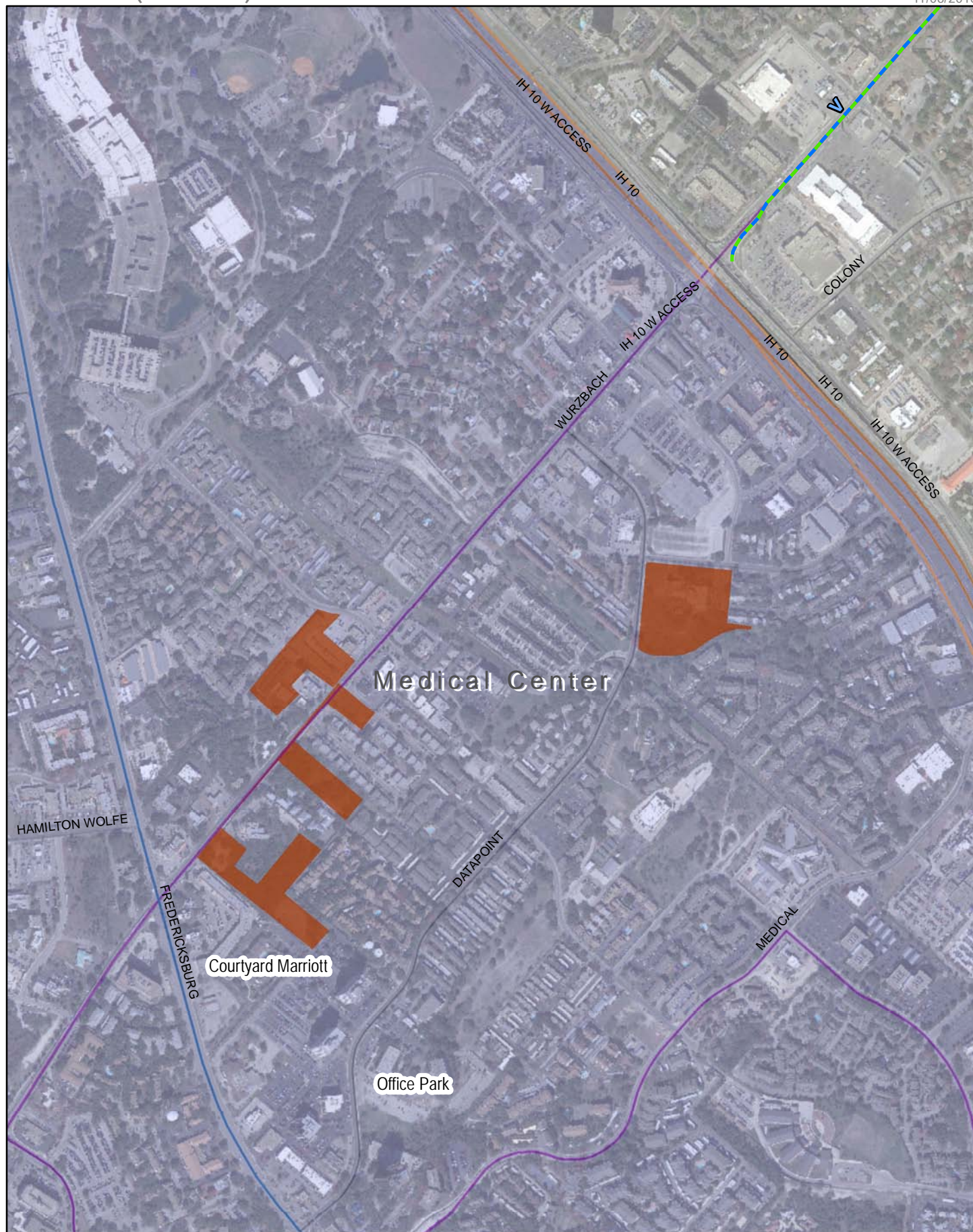
DRAFT - For Discussion Only
11/07/2016



Draft Neighborhood Improvement Areas Wurzbach (District 8)

#13

DRAFT - For Discussion Only
11/08/2016



Draft Neighborhood Improvement Areas

Blanco Road at West Ave (District 9)

#14

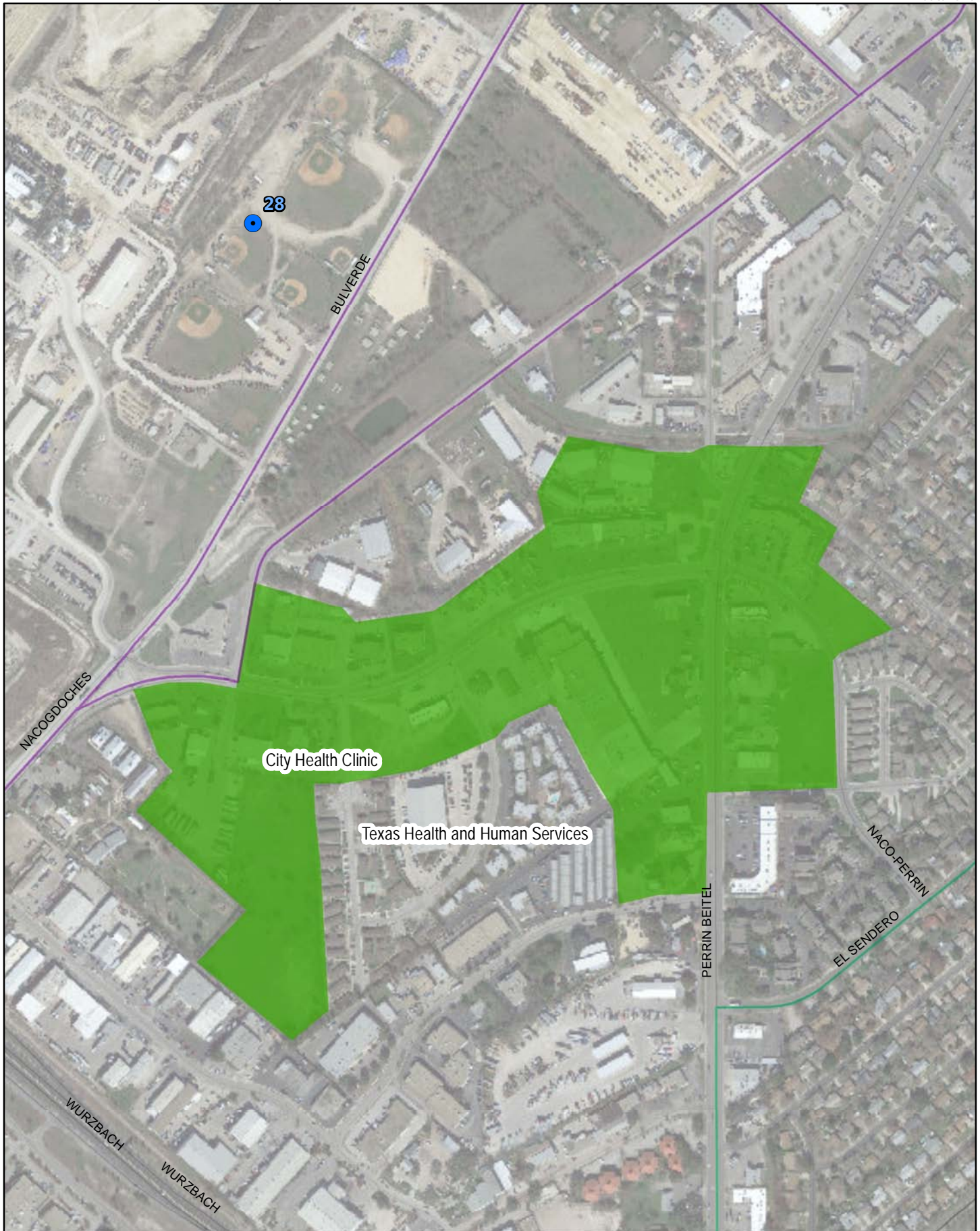
DRAFT - For Discussion Only
11/07/2016



Draft Neighborhood Improvement Areas Naco Perrin (District 10)

#15

DRAFT - For Discussion Only
11/08/2016



Legend



Historic
Districts



Proposed
Bond Project
Lines within
1/2 Mile



Proposed
Bond Project
Points within
1/2 Mile



VIA Primo



VIA Frequent
Service



VIA Express
Service



VIA Skip
Service



VIA Metro
Service

**SA Tomorrow
Regional Centers**



Brooks



Central
Business
District



Fort Sam
Houston



Midtown



Lackland
AFB/Port
San Antonio



Medical
Center

Legend ID	Project Name	Project Scope
1	San Pedro Springs Park	General park improvements to possibly include but not limited to: overall park wayfinding and development of additional walking trails in park's Southeast Quadrant.
2	Central Library Improvements	Interior renovations to Central Library to include but not limited to: cooling tower replacement, public restroom renovations and 1st , 2nd , 3rd and 6th floor renovations.
3	San Pedro Creek	Leveraged funding to support the larger improvement initiative associated with Phases 1 and 2 of the San Pedro Creek Restoration Project.
4	McFarlin Tennis Center at San Pedro Springs Park	General facility improvements to include ADA modifications to the restrooms within clubhouse facility
5	Downtown Park Package	General park rehabilitation and improvements to Columbus, Maverick, Milam and Travis Parks.
6	Downtown Park Package	General park rehabilitation and improvements to Columbus, Maverick, Milam and Travis Parks.
7	Downtown Park Package	General park rehabilitation and improvements to Columbus, Maverick, Milam and Travis Parks.
8	Alamo Area Streets	Street improvements in Alamo area as identified in the ongoing Alamo Master Plan. This project will leverage state and private funding.
8	Alamo Area Streets	Street improvements in Alamo area as identified in the ongoing Alamo Master Plan. This project will leverage state and private funding.
9	Center City Substation for SAPD and Park Police HQ	Construct new facility for SAPD Center City Substation and new Park Police HQ, Property Crimes Detectives, Downtown Foot & Bike Patrol.
9	Center City Substation for SAPD and Park Police HQ	Construct new facility for SAPD Center City Substation and new Park Police HQ, Property Crimes Detectives, Downtown Foot & Bike Patrol.
10	Flores / Fredericksburg Intersection Improvements	Reconstruct and reconfigure Five Points intersection to improve pedestrian amenities and complement this transit oriented corridor. This will leverage funding with VIA.
11	Hemisfair Internal Streets Phase 2	Reconstruct Hemisfair internal streets to include Hemisfair Boulevard. This is a continuation of 2012 Bond projects.
12	Hemisfair Civic Park	Development of the Hemisfair Civic Park. Leveraged funding from HPARC and other funding sources.
13	Lincoln Park	General park rehabilitation and improvements to compliment local grant funding.
14	Lockwood & Dignowity Parks	General park rehabilitation and improvements to include, but not limited to, the closure of Burnet St. as well as development of plazas and facilities to accommodate a farmer's market.
15	Downtown Park Package	General park rehabilitation and improvements to Columbus, Maverick, Milam and Travis Parks.
16	Alamo Area	Construct facilities in support of Alamo area improvements. Funds will be leveraged with Texas General Land Office and private donations.
17	Martin Luther King Park	General park improvements to include, but not limited to, rehabilitation of the traditional park amenities as well as upgrades to park access and security lighting.
18	Wheatley Heights Community Center	Improve and expand facility for use as a community center and locker rooms.
19	Memorial Branch Library	Comprehensive branch library expansion and renovation.
20	Mission Marquee Green Room	Improvements to existing Mission Marquee for use as "green room" for performers.
21	World Heritage/Cultural Arts Center	New facility to provide orientation center, exhibit and community space . Project funding and operations proposed to be leveraged with community partner.
22	Pearsall Park	Continued development and improvement to the park in support of the Park's Master Plan.
23	District 5 Parks Package	General park improvements and rehabilitation for District 5 Benavides, Collins Garden, Kennedy and Vidaurri Parks.
24	Normoyle Park	General park improvements and rehabilitation.
25	District 5 Parks Package	General park improvements and rehabilitation for District 5 Benavides, Collins Garden, Kennedy and Vidaurri Parks.
26	District 5 Parks Package	General park improvements and rehabilitation for District 5 Benavides, Collins Garden, Kennedy and Vidaurri Parks.

27	Cuellar Park	General park improvements to include, but not limited to, upgrade to the existing playground and renovations to the community center.
28	Capitol Little League Baseball Fields	Relocation of the Capitol Little League.
A	Broadway (Houston St. to Hildebrand)	Develop and implement a complete street concept to include roadway reconstruction, curbs, sidewalks, driveway approaches, bicycle amenities, lighting, drainage and traffic improvements. This will be done in coordination with TxDOT as part of turn-back agreement.
B	Probandt (Alamo to Highway 90)	Corridor improvements to include pedestrian amenities, drainage and traffic improvements as needed. This will be leveraged funding with Texas Department of Transportation.
C	West Commerce Corridor (Frio to Colorado)	Improvements to West Commerce Corridor as per Master Plan to include but not limited to: reconfiguring of lanes on bridge, wider sidewalks and bike facilities.
D	Santa Rosa (Cesar Chavez to Houston)	Reconstruct Santa Rosa to include addition of pedestrian amenities and streetscape improvements.
E	San Saba (Dolorosa to West Martin)	Roadway improvements on San Saba to include addition of pedestrian amenities and streetscape improvements.
F	Main and Soledad (Pecan to Navarro)	Reconstruct Main and Soledad to include pedestrian amenities and streetscape improvements. Bike amenities will be added on Main. This is a continuation of the 2012 bond program project.
G	Commerce Street (St. Mary's to Santa Rosa)	Reconstruct Commerce to include pedestrian amenities and streetscape improvements. Project will also provide wayfinding signage in the downtown area. These funds will supplement the 2012 bond program project.
H	Commerce Street (Santa Rosa to Frio)	Reconstruct roadway to include pedestrian amenities and streetscape improvements. This is a continuation of the 2012 bond program project.
I	Camaron Pedestrian Improvements	Develop pedestrian corridor on Camaron and Kingsbury Streets from Houston Street to North Flores/Fox Tech.
J	San Pedro Creek Improvements	This project will leverage local funding to support a larger improvement initiative associated with Phase 1 & 2 of the San Pedro Creek Restoration Project.
K	Lone Star Area Streets (World Heritage)	Reconstruct and widen Lone Star Blvd and incorporate pedestrian and bicycle amenities in support of the World Heritage initiative. Improve intersections as needed. Leverage project with private development.
L	Lamar (Austin to New Braunfels)	Street, curb and sidewalk improvements on Lamar Street. This project provides supplemental funding to existing street project.
M	Roosevelt Corridor Improvements	Street improvements on Roosevelt and St. Mary's to include bicycle facilities, sidewalks and landscaping to improve the corridor. Improve ADA access under the Union Pacific Railroad bridge structure.
N	New Braunfels Phase 1 (Houston to Burleson)	Improve the corridor with new sidewalks and other amenities.
O	South Alamo (Market to Cesar Chavez)	Reconstruct roadway to include pedestrian amenities and streetscape improvements.
P	Upland Road Drainage	Construction of storm drain system in Eastwood Village Neighborhood to provide ponding and erosion relief to the neighborhood streets. Affected to be reconstructed and may include curbs, sidewalks and driveway approaches.
Q	South Presa (World Heritage)	Corridor improvements in support of World Heritage initiatives.
R	Southcross (IH 37 to IH 35) (World Heritage)	Corridor improvements to include but not limited to pedestrian amenities and enhancements in support of World Heritage initiatives.
S	Southcross (IH 37 to IH 35) (World Heritage)	Corridor improvements to include but not limited to pedestrian amenities and enhancements in support of World Heritage initiatives.
T	Roosevelt Avenue (World Heritage)	Corridor improvements to include but not limited to pedestrian amenities and enhancements from Hwy 90 to Mission San Jose (north of Military Drive).
U	Enrique Barrera Pkwy Corridor Phase 1	Improve corridor with street, drainage and sidewalk improvements as needed.
V	Wurzbach Corridor Improvements	This project will leverage state and federal funding that includes improvements at key intersection along the Wurzbach corridor.